

CLPTM1 Polyclonal Antibody

Catalog No :	YT0980
Reactivity :	Human;Mouse;Monkey
Applications :	WB;IF;ELISA
Target :	CLPTM1
Gene Name :	CLPTM1
Protein Name :	Cleft lip and palate transmembrane protein 1
Human Gene Id :	1209
Human Swiss Prot No :	O96005
Mouse Gene Id :	56457
Mouse Swiss Prot No :	Q8VBZ3
Immunogen :	The antiserum was produced against synthesized peptide derived from human CLPT1. AA range:200-249
Specificity :	CLPTM1 Polyclonal Antibody detects endogenous levels of CLPTM1 protein.
Formulation :	Liquid in PBS containing 50% glycerol, 0.5% BSA and 0.02% sodium azide.
Source :	Polyclonal, Rabbit,IgG
Dilution :	WB 1:500 - 1:2000. IF 1:200 - 1:1000. ELISA: 1:10000. Not yet tested in other applications.
Purification :	The antibody was affinity-purified from rabbit antiserum by affinity-chromatography using epitope-specific immunogen.
Concentration :	1 mg/ml
Storage Stability :	-15°C to -25°C/1 year(Do not lower than -25°C)

Observed Band : 74kD

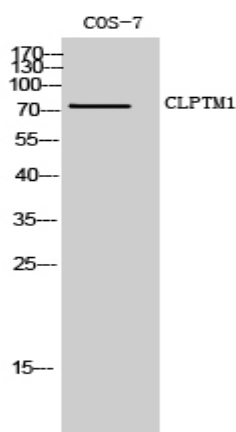
Background : function:May play a role in T-cell development.,miscellaneous:A chromosomal translocation involving CLPTM1 is found in a family with cleft lip and palate. However, no etiologic link with the disease is characterized. Translocation t(2;19)(q11.2;q13.3).,similarity:Belongs to the CLPTM1 family.,tissue specificity:Widely expressed.,

Function : function:May play a role in T-cell development.,miscellaneous:A chromosomal translocation involving CLPTM1 is found in a family with cleft lip and palate. However, no etiologic link with the disease is characterized. Translocation t(2;19)(q11.2;q13.3).,similarity:Belongs to the CLPTM1 family.,tissue specificity:Widely expressed.,

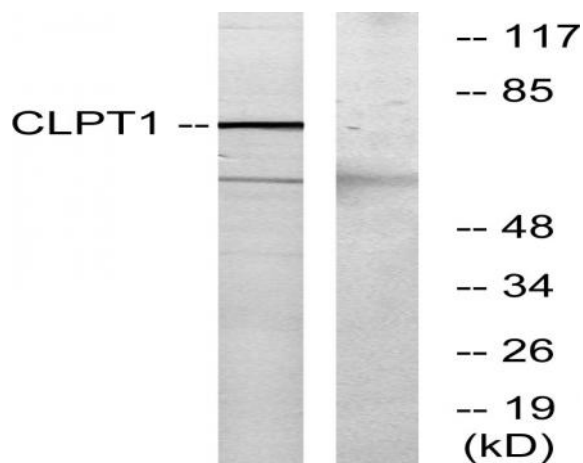
Subcellular Location : Membrane ; Multi-pass membrane protein .

Expression : Widely expressed.

Products Images



Western Blot analysis of COS-7 cells using CLPTM1 Polyclonal Antibody



Western blot analysis of lysates from COS7 cells, using CLPT1 Antibody. The lane on the right is blocked with the synthesized peptide.