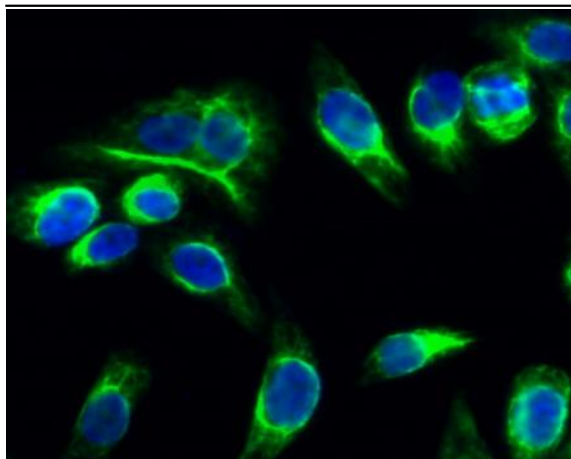


Catenin- α E/N Polyclonal Antibody

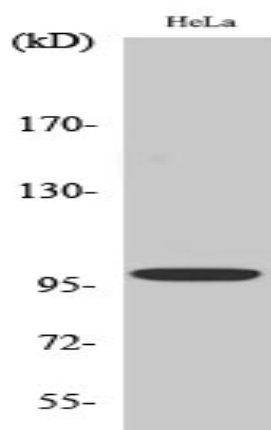
Catalog No :	YT0669
Reactivity :	Human;Mouse;Rat
Applications :	WB;IHC;IF;ELISA
Target :	Catenin- α E/N
Fields :	>>Hippo signaling pathway;>>Adherens junction;>>Leukocyte transendothelial migration;>>Bacterial invasion of epithelial cells;>>Pathways in cancer;>>Endometrial cancer;>>Gastric cancer;>>Arrhythmogenic right ventricular cardiomyopathy
Gene Name :	CTNNA1/CTNNA2
Protein Name :	Catenin alpha-1/2
Human Gene Id :	1495/1496
Human Swiss Prot No :	P35221/P26232
Mouse Gene Id :	12385/12386
Immunogen :	The antiserum was produced against synthesized peptide derived from human Catenin-alpha1. AA range:857-906
Specificity :	Catenin- α E/N Polyclonal Antibody detects endogenous levels of Catenin- α E/N protein.
Formulation :	Liquid in PBS containing 50% glycerol, 0.5% BSA and 0.02% sodium azide.
Source :	Polyclonal, Rabbit,IgG
Dilution :	WB 1:500 - 1:2000. IHC 1:100 - 1:300. IF 1:200 - 1:1000. ELISA: 1:5000. Not yet tested in other applications.
Purification :	The antibody was affinity-purified from rabbit antiserum by affinity-chromatography using epitope-specific immunogen.

Concentration : 1 mg/ml**Storage Stability :** -15°C to -25°C/1 year(Do not lower than -25°C)**Observed Band :** 100kD**Cell Pathway :** Adherens_Junction;Adherens_Junction;Leukocyte transendothelial migration;Pathways in cancer;Endometrial cancer;Arrhythmogenic right ventricular cardiomyopathy (ARVC);**Background :** catenin alpha 1(CTNNA1) Homo sapiens This gene encodes a member of the catenin family of proteins that play an important role in cell adhesion process by connecting cadherins located on the plasma membrane to the actin filaments inside the cell. The encoded mechanosensing protein contains three vinculin homology domains and undergoes conformational changes in response to cytoskeletal tension, resulting in the reconfiguration of cadherin-actin filament connections. Certain mutations in this gene cause butterfly-shaped pigment dystrophy. [provided by RefSeq, May 2016],**Function :** disease:Abnormalities of alpha-catenin are involved in the process of cancer invasion and metastasis.,function:Associates with the cytoplasmic domain of a variety of cadherins. The association of catenins to cadherins produces a complex which is linked to the actin filament network, and which seems to be of primary importance for cadherins cell-adhesion properties. May play a crucial role in cell differentiation.,PTM:Sumoylated.,similarity:Belongs to the vinculin/alpha-catenin family.,subcellular location:Found at cell-cell boundaries and probably at cell-matrix boundaries.,subunit:Binds MLLT4 and F-actin (By similarity). Interacts directly with PSEN1 and CTNNB1 to form part of the PSEN1/cadherin/catenin adhesion complex. Interacts with ARHGAP21 and with JUB.,tissue specificity:Expressed ubiquitously in normal tissues.,**Subcellular Location :** [Isoform 1]: Cytoplasm, cytoskeleton. Cell junction, adherens junction. Cell membrane; Peripheral membrane protein; Cytoplasmic side. Cell junction. Found at cell-cell boundaries and probably at cell-matrix boundaries.; [Isoform 3]: Cell membrane ; Peripheral membrane protein ; Cytoplasmic side .**Expression :** Expressed ubiquitously in normal tissues.

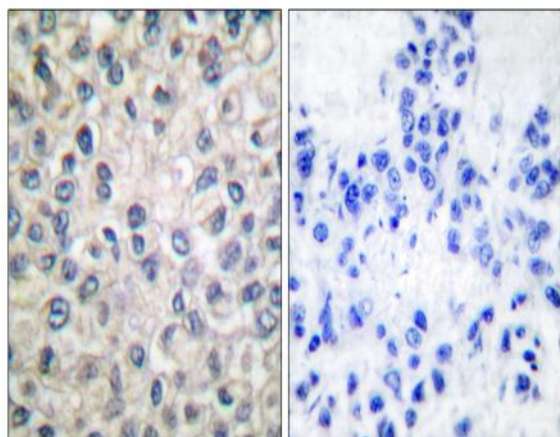
Products Images



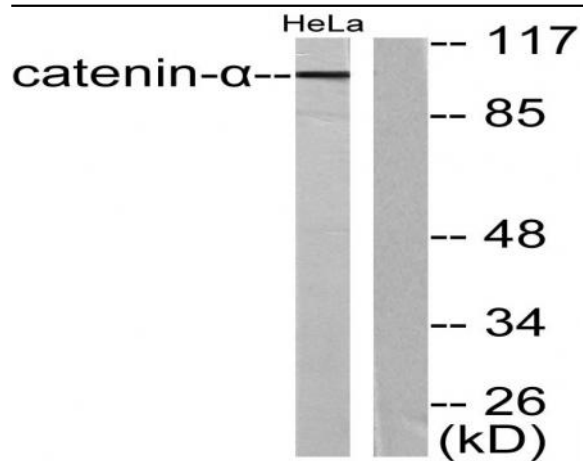
Immunofluorescence analysis of HeLa cell. 1, Catenin- α E/N Polyclonal Antibody (green) was diluted at 1:200 (4° overnight). 2, Goat Anti Rabbit Alexa Fluor 488 Catalog:RS3211 was diluted at 1:1000 (room temperature, 50min). 3 DAPI (blue) 10min.



Western Blot analysis of various cells using Catenin- α E/N Polyclonal Antibody diluted at 1:500



Immunohistochemistry analysis of paraffin-embedded human breast carcinoma tissue, using Catenin- α 1 Antibody. The picture on the right is blocked with the synthesized peptide.



Western blot analysis of lysates from HeLa cells, using Catenin-alpha1 Antibody. The lane on the right is blocked with the synthesized peptide.