

**CASPR3 Polyclonal Antibody**

<b>Catalog No :</b>	YT0665
<b>Reactivity :</b>	Human
<b>Applications :</b>	IHC;IF;ELISA
<b>Target :</b>	CASPR3
<b>Gene Name :</b>	CNTNAP3
<b>Protein Name :</b>	Contactin-associated protein-like 3
<b>Human Gene Id :</b>	79937
<b>Human Swiss Prot No :</b>	Q9BZ76
<b>Immunogen :</b>	Synthesized peptide derived from the C-terminal region of human CASPR3.
<b>Specificity :</b>	CASPR3 Polyclonal Antibody detects endogenous levels of CASPR3 protein.
<b>Formulation :</b>	Liquid in PBS containing 50% glycerol, 0.5% BSA and 0.02% sodium azide.
<b>Source :</b>	Polyclonal, Rabbit,IgG
<b>Dilution :</b>	IHC 1:100 - 1:300. ELISA: 1:10000.. IF 1:50-200
<b>Purification :</b>	The antibody was affinity-purified from rabbit antiserum by affinity-chromatography using epitope-specific immunogen.
<b>Concentration :</b>	1 mg/ml
<b>Storage Stability :</b>	-15°C to -25°C/1 year(Do not lower than -25°C)
<b>Molecularweight :</b>	141kD
<b>Background :</b>	The protein encoded by this gene belongs to the NCP family of cell-recognition molecules. This family represents a distinct subgroup of the neurexins. NCP proteins mediate neuron-glia interactions in vertebrates and glial-glia contact in

invertebrates. The protein encoded by this gene may play a role in cell recognition within the nervous system. Alternatively spliced transcript variants encoding different isoforms have been described but their biological nature has not been determined. [provided by RefSeq, Jul 2008],

---

**Function :**

similarity:Belongs to the neurexin family.,similarity:Contains 1 F5/8 type C domain.,similarity:Contains 1 fibrinogen C-terminal domain.,similarity:Contains 2 EGF-like domains.,similarity:Contains 4 laminin G-like domains.,

---

**Subcellular Location :**

[Isoform 1]: Cell membrane ; Single-pass type I membrane protein .; [Isoform 2]: Secreted .

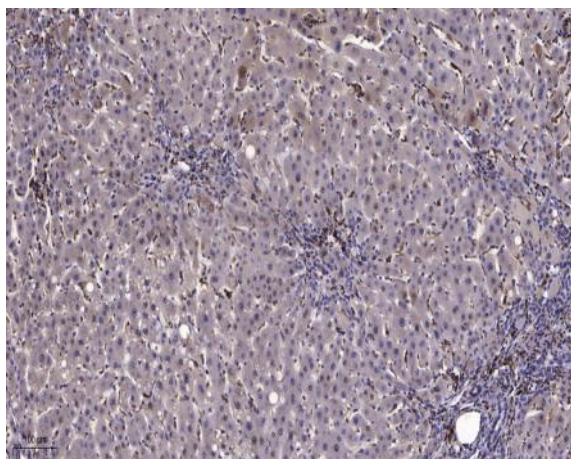
---

**Expression :**

Brain,Human fetal brain,Prostate,

---

## Products Images



Immunohistochemical analysis of paraffin-embedded human liver cancer. 1, Antibody was diluted at 1:200(4° overnight). 2, Tris-EDTA,pH9.0 was used for antigen retrieval. 3,Secondary antibody was diluted at 1:200(room temperature, 45min).