

CLIC6 Polyclonal Antibody

Catalog No :	YT0966
Reactivity :	Human;Rat;Mouse;
Applications :	WB;ELISA
Target :	CLIC6
Gene Name :	CLIC6
Protein Name :	Chloride intracellular channel protein 6
Human Gene Id :	54102
Human Swiss Prot No :	Q96NY7
Mouse Swiss Prot No :	Q8BHB9
Immunogen :	The antiserum was produced against synthesized peptide derived from human CLIC6. AA range:411-460
Specificity :	CLIC6 Polyclonal Antibody detects endogenous levels of CLIC6 protein.
Formulation :	Liquid in PBS containing 50% glycerol, 0.5% BSA and 0.02% sodium azide.
Source :	Polyclonal, Rabbit,IgG
Dilution :	WB 1:500 - 1:2000. ELISA: 1:40000. Not yet tested in other applications.
Purification :	The antibody was affinity-purified from rabbit antiserum by affinity-chromatography using epitope-specific immunogen.
Concentration :	1 mg/ml
Storage Stability :	-15°C to -25°C/1 year(Do not lower than -25°C)
Observed Band :	75kD

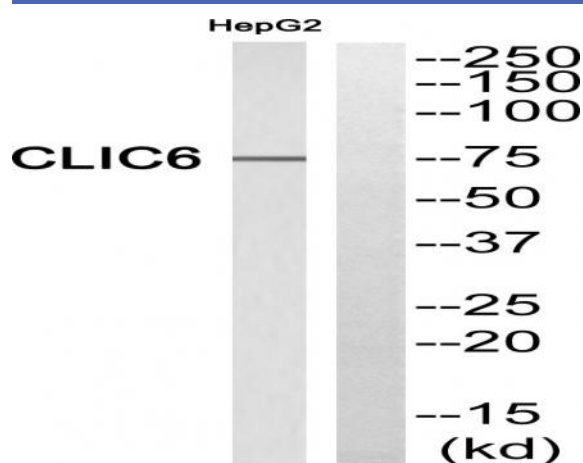
Background : chloride intracellular channel 6(CLIC6) Homo sapiens This gene encodes a member of the chloride intracellular channel family of proteins. The gene is part of a large triplicated region found on chromosomes 1, 6, and 21. Alternative splicing results in multiple transcript variants encoding different isoforms. [provided by RefSeq, Nov 2015],

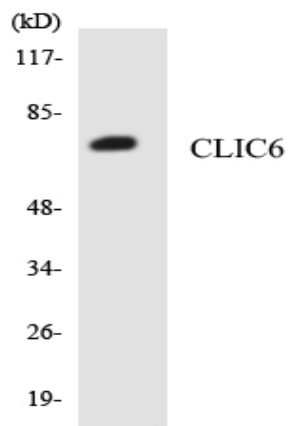
Function : domain:Members of this family may change from a globular, soluble state to a state where the N-terminal domain is inserted into the membrane and functions as chloride channel. A conformation change of the N-terminal domain is thought to expose hydrophobic surfaces that trigger membrane insertion.,function:May insert into membranes and form chloride ion channels. May play a critical role in water-secreting cells, possibly through the regulation of chloride ion transport.,PTM:Phosphorylated.,similarity:Belongs to the chloride channel CLIC family.,similarity:Contains 1 GST C-terminal domain.,subcellular location:Predominantly cytoplasmic. Upon chloride ion efflux from the cell, it is translocated to the plasma membrane.,subunit:Interacts with dopamine receptors DRD2, DRD3 and DRD4.,tissue specificity:Expressed in brain, placenta, pancreas and liver.,

Subcellular Location : Cytoplasm . Cell membrane ; Single-pass membrane protein . Predominantly cytoplasmic. Upon chloride ion efflux from the cell, it is translocated to the plasma membrane (By similarity). .

Expression : Expressed in brain, placenta, pancreas and liver.

Products Images





Western blot analysis of the lysates from HepG2 cells using CLIC6 antibody.