

CKR-2 Polyclonal Antibody

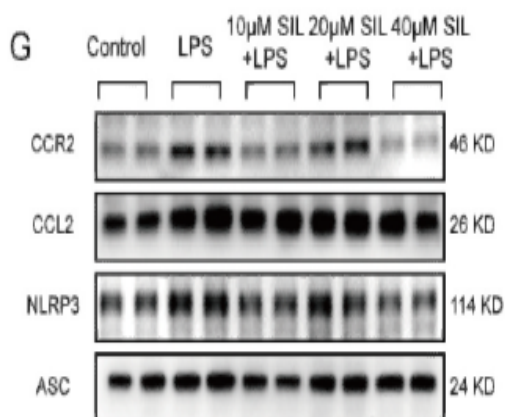
Catalog No :	YT0934
Reactivity :	Mouse;Rat
Applications :	WB;IF;ELISA
Target :	CKR-2
Gene Name :	CCR2
Protein Name :	C-C chemokine receptor type 2
Human Swiss Prot No :	P41597
Mouse Gene Id :	12772
Rat Gene Id :	60463
Rat Swiss Prot No :	O55193
Immunogen :	Synthesized peptide derived from CKR-2 . at AA range: 250-330
Specificity :	CKR-2 Polyclonal Antibody detects endogenous levels of CKR-2 protein.
Formulation :	Liquid in PBS containing 50% glycerol, 0.5% BSA and 0.02% sodium azide.
Source :	Polyclonal, Rabbit,IgG
Dilution :	WB 1:500 - 1:2000. IF 1:200 - 1:1000. ELISA: 1:5000. Not yet tested in other applications.
Purification :	The antibody was affinity-purified from rabbit antiserum by affinity-chromatography using epitope-specific immunogen.
Concentration :	1 mg/ml
Storage Stability :	-15°C to -25°C/1 year(Do not lower than -25°C)

Observed Band : 46kD

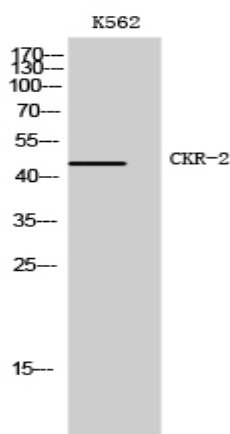
Background :

CCR2 (C-C Motif Chemokine Receptor 2) is a Protein Coding gene. Diseases associated with CCR2 include idiopathic anterior uveitis and cd3zeta deficiency. Among its related pathways are Signaling by GPCR and A-beta Pathways: uptake and Degradation. GO annotations related to this gene include G-protein coupled receptor activity and chemokine receptor activity. An important paralog of this gene is CCR9. eceptor for the CCL2, CCL7 and CCL13 chemokines. Transduces a signal by increasing intracellular calcium ion levels. Alternative coreceptor with CD4 for HIV-1 infection. hemokine CC receptors (CCRs) predominantly recognize CC chemokines. CC chemokines are distinguished by having four conserved cysteines, with the first two cysteines being adjacent to each other. There are 10 chemokine CC receptors.

Products Images



Identification of CCR2 as a hub in septic myocardial injury and cardioprotection of silibinin *FREE RADICAL BIOLOGY AND MEDICINE* Ye Tian WB Mouse cardiomyocytes



Western Blot analysis of K562 cells using CKR-2 Polyclonal Antibody