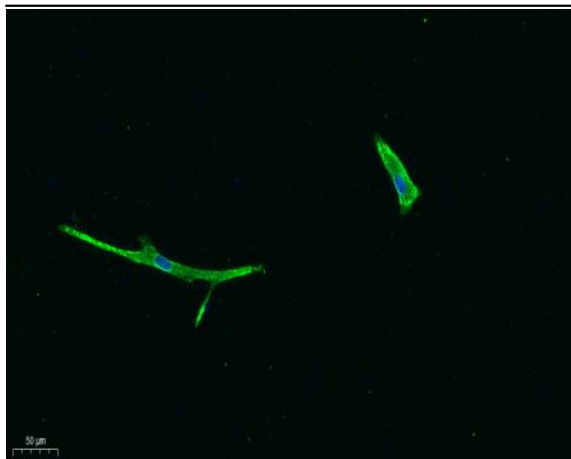


c-Kit Polyclonal Antibody

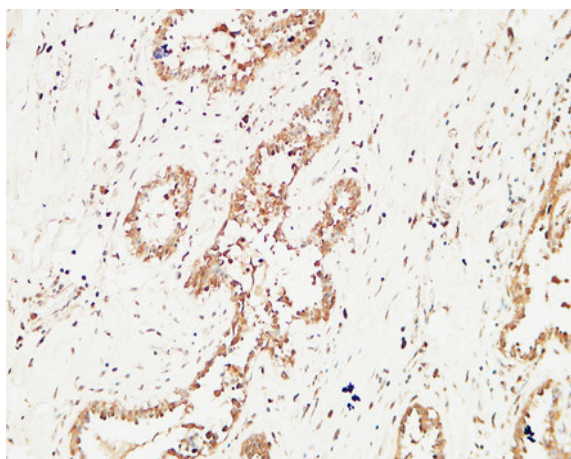
Catalog No :	YT0933
Reactivity :	Human;Mouse;Rat;Monkey
Applications :	WB;IHC;IF;ELISA
Target :	c-Kit/CD117
Fields :	>>MAPK signaling pathway;>>Ras signaling pathway;>>Rap1 signaling pathway;>>Phospholipase D signaling pathway;>>PI3K-Akt signaling pathway;>>Hematopoietic cell lineage;>>Melanogenesis;>>Pathways in cancer;>>Acute myeloid leukemia;>>Breast cancer;>>Central carbon metabolism in cancer
Gene Name :	KIT
Protein Name :	Mast/stem cell growth factor receptor Kit
Human Gene Id :	3815
Human Swiss Prot No :	P10721
Mouse Gene Id :	16590
Mouse Swiss Prot No :	P05532
Immunogen :	The antiserum was produced against synthesized peptide derived from human c-Kit. AA range:688-737
Specificity :	c-Kit Polyclonal Antibody detects endogenous levels of c-Kit protein.
Formulation :	Liquid in PBS containing 50% glycerol, 0.5% BSA and 0.02% sodium azide.
Source :	Polyclonal, Rabbit,IgG
Dilution :	WB 1:500 - 1:2000. IHC: 1:100-300 ELISA: 1:20000. IF 1:100-300 Not yet tested in other applications.

Purification :	The antibody was affinity-purified from rabbit antiserum by affinity-chromatography using epitope-specific immunogen.
Concentration :	1 mg/ml
Storage Stability :	-15°C to -25°C/1 year(Do not lower than -25°C)
Observed Band :	120kD
Cell Pathway :	Cytokine-cytokine receptor interaction;Endocytosis;Hematopoietic cell lineage;Melanogenesis;Pathways in cancer;Acute myeloid leukemia;
Background :	This gene encodes the human homolog of the proto-oncogene c-kit. C-kit was first identified as the cellular homolog of the feline sarcoma viral oncogene v-kit. This protein is a type 3 transmembrane receptor for MGF (mast cell growth factor, also known as stem cell factor). Mutations in this gene are associated with gastrointestinal stromal tumors, mast cell disease, acute myelogenous leukemia, and piebaldism. Multiple transcript variants encoding different isoforms have been found for this gene. [provided by RefSeq, Jul 2008],
Function :	catalytic activity:ATP + a [protein]-L-tyrosine = ADP + a [protein]-L-tyrosine phosphate.,disease:Defects in KIT are a cause of gastrointestinal stromal tumor (GIST) [MIM:606764].,disease:Defects in KIT are a cause of piebaldism [MIM:172800]. Piebaldism is an autosomal dominant genetic developmental abnormality of pigmentation characterized by congenital patches of white skin and hair that lack melanocytes.,disease:Defects in KIT have been associated with testicular tumors [MIM:273300]. It includes germ cell tumor (GCT) or testicular germ cell tumor (TGCT).,function:This is the receptor for stem cell factor (mast cell growth factor). It has a tyrosine-protein kinase activity. Binding of the ligands leads to the autophosphorylation of KIT and its association with substrates such as phosphatidylinositol 3-kinase (Pi3K).,online information:CD117 entry,similarity:Belongs to the protein kinas
Subcellular Location :	[Isoform 1]: Cell membrane; Single-pass type I membrane protein.; [Isoform 2]: Cell membrane; Single-pass type I membrane protein.; [Isoform 3]: Cytoplasm . Detected in the cytoplasm of spermatozoa, especially in the equatorial and subacrosomal region of the sperm head. .
Expression :	[Isoform 3]: In testis, detected in spermatogonia in the basal layer and in interstitial Leydig cells but not in Sertoli cells or spermatocytes inside the seminiferous tubules (at protein level) (PubMed:20601678). Expression is maintained in ejaculated spermatozoa (at protein level) (PubMed:20601678).

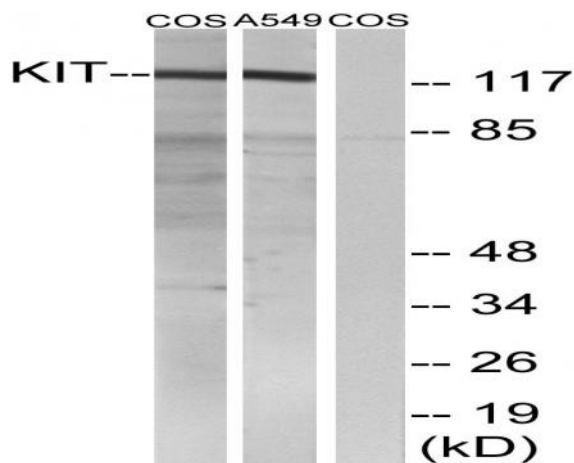
Products Images



Immunofluorescence analysis of A549. 1, primary Antibody was diluted at 1:200(4°C overnight). 2, Goat Anti Rabbit IgG (H&L) - Alexa Fluor 488 Secondary antibody was diluted at 1:1000(room temperature, 50min).3, Picture B: DAPI(blue) 10min.



Immunohistochemical analysis of paraffin-embedded Human Mammary cancer. 1, Antibody was diluted at 1:400(4 ° overnight). 2, High-pressure and temperature EDTA, pH8.0 was used for antigen retrieval. 3, Secondary antibody was diluted at 1:200(room temperature, 30min).



Western blot analysis of lysates from COS7/A549, using c-Kit Antibody. The lane on the right is blocked with the synthesized peptide.