

Calpain 11 Polyclonal Antibody

Catalog No :	YT0615
Reactivity :	Human;Rat;Mouse;
Applications :	WB;ELISA
Target :	Calpain 11
Gene Name :	CAPN11
Protein Name :	Calpain-11
Human Gene Id :	11131
Human Swiss Prot No :	Q9UMQ6
Mouse Swiss Prot No :	Q6J756
Immunogen :	The antiserum was produced against synthesized peptide derived from human CAPN11. AA range:401-450
Specificity :	Calpain 11 Polyclonal Antibody detects endogenous levels of Calpain 11 protein.
Formulation :	Liquid in PBS containing 50% glycerol, 0.5% BSA and 0.02% sodium azide.
Source :	Polyclonal, Rabbit,IgG
Dilution :	WB 1:500 - 1:2000. ELISA: 1:5000. Not yet tested in other applications.
Purification :	The antibody was affinity-purified from rabbit antiserum by affinity-chromatography using epitope-specific immunogen.
Concentration :	1 mg/ml
Storage Stability :	-15°C to -25°C/1 year(Do not lower than -25°C)
Observed Band :	81kD

Background :

Calpains constitute a family of intracellular calcium-dependent cysteine proteases. There are eight members in this superfamily. They consist of a variable 80 kDa subunit and an invariant 30 kDa subunit. This calpain protein appears to have protease activity and calcium-binding ability. A similar mouse protein may play a functional role in spermatogenesis and in the regulation of calcium-dependent signal transduction events during meiosis. [provided by RefSeq, Dec 2008],

Function :

catalytic activity:Broad endopeptidase specificity.,function:Calcium-regulated non-lysosomal thiol-protease which catalyzes limited proteolysis of substrates involved in cytoskeletal remodeling and signal transduction.,similarity:Belongs to the peptidase C2 family.,similarity:Contains 1 calpain catalytic domain.,similarity:Contains 2 EF-hand domains.,subunit:Heterodimer of a large (catalytic) and a small (regulatory) subunit.,tissue specificity:Highest expression in testis.,

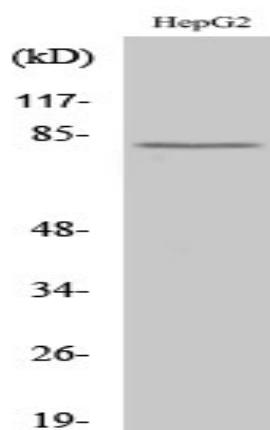
Subcellular Location :

Cytoplasmic vesicle, secretory vesicle, acrosome .

Expression :

Highest expression in testis.

Products Images



Western Blot analysis of various cells using Calpain 11 Polyclonal Antibody