

Calgizzarin Polyclonal Antibody

| | |
|------------------------------|---|
| Catalog No : | YT0610 |
| Reactivity : | Human;Mouse;Rat |
| Applications : | IHC;IF;ELISA |
| Target : | Calgizzarin |
| Gene Name : | S100A11 |
| Protein Name : | Protein S100-A11 |
| Human Gene Id : | 6282 |
| Human Swiss Prot No : | P31949 |
| Mouse Gene Id : | 20195 |
| Mouse Swiss Prot No : | P50543 |
| Rat Gene Id : | 445415 |
| Rat Swiss Prot No : | Q6B345 |
| Immunogen : | Synthesized peptide derived from Calgizzarin . at AA range: 30-110 |
| Specificity : | Calgizzarin Polyclonal Antibody detects endogenous levels of Calgizzarin protein. |
| Formulation : | Liquid in PBS containing 50% glycerol, 0.5% BSA and 0.02% sodium azide. |
| Source : | Polyclonal, Rabbit,IgG |
| Dilution : | IHC 1:100 - 1:300. ELISA: 1:10000.. IF 1:50-200 |
| Purification : | The antibody was affinity-purified from rabbit antiserum by affinity-chromatography using epitope-specific immunogen. |

Concentration : 1 mg/ml

Storage Stability : -15°C to -25°C/1 year(Do not lower than -25°C)

Molecularweight : 12kD

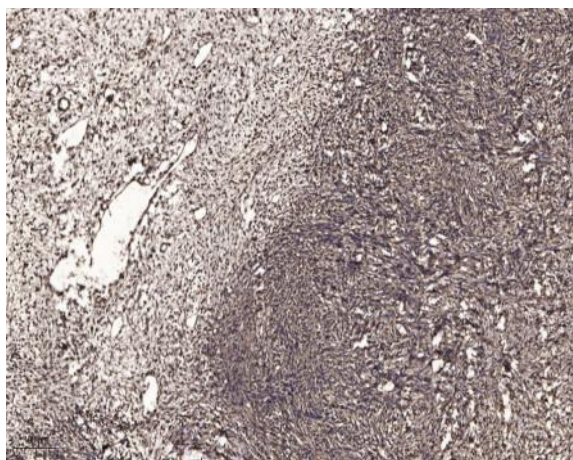
Background : The protein encoded by this gene is a member of the S100 family of proteins containing 2 EF-hand calcium-binding motifs. S100 proteins are localized in the cytoplasm and/or nucleus of a wide range of cells, and involved in the regulation of a number of cellular processes such as cell cycle progression and differentiation. S100 genes include at least 13 members which are located as a cluster on chromosome 1q21. This protein may function in motility, invasion, and tubulin polymerization. Chromosomal rearrangements and altered expression of this gene have been implicated in tumor metastasis. [provided by RefSeq, Jul 2008],

Function : function:Facilitates the differentiation and the cornification of keratinocytes.,miscellaneous:Binds two calcium ions per molecule with an affinity similar to that of the S-100 proteins.,PTM:Phosphorylation at Thr-10 by PRKCA significantly suppresses homodimerization and promotes association with NCL/nucleolin which induces nuclear translocation.,similarity:Belongs to the S-100 family.,similarity:Contains 2 EF-hand domains.,subunit:Homodimer; disulfide-linked.,

Subcellular Location : Cytoplasm . Nucleus .

Expression : Brain,Epithelium,Keratinocyte,Lung,Mammary carcinoma,Placenta,Urina

Products Images



Immunohistochemical analysis of paraffin-embedded human oophoroma. 1, Antibody was diluted at 1:200(4° overnight). 2, Tris-EDTA,pH9.0 was used for antigen retrieval. 3,Secondary antibody was diluted at 1:200(room temperature, 45min).