

Chr-A Polyclonal Antibody

Catalog No :	YT0916
Reactivity :	Human;Mouse;Rat
Applications :	WB;IHC;IF;ELISA
Target :	Chromogranin A
Gene Name :	CHGA
Protein Name :	Chromogranin-A
Human Gene Id :	1113
Human Swiss Prot No :	P10645
Mouse Gene Id :	12652
Mouse Swiss Prot No :	P26339
Rat Swiss Prot No :	P10354
Immunogen :	The antiserum was produced against synthesized peptide derived from human Chr-A. AA range:311-360
Specificity :	Chr-A Polyclonal Antibody detects endogenous levels of Chr-A protein.
Formulation :	Liquid in PBS containing 50% glycerol, 0.5% BSA and 0.02% sodium azide.
Source :	Polyclonal, Rabbit,IgG
Dilution :	WB 1:500 - 1:2000. IHC 1:100 - 1:300. ELISA: 1:10000.. IF 1:50-200
Purification :	The antibody was affinity-purified from rabbit antiserum by affinity-chromatography using epitope-specific immunogen.
Concentration :	1 mg/ml

Storage Stability : -15°C to -25°C/1 year(Do not lower than -25°C)

Observed Band : 68kD

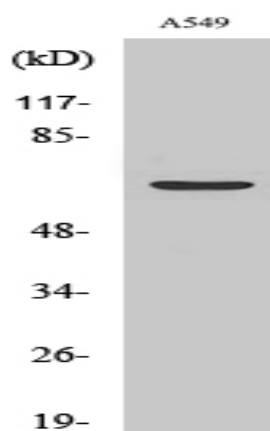
Background : The protein encoded by this gene is a member of the chromogranin/secretogranin family of neuroendocrine secretory proteins. It is found in secretory vesicles of neurons and endocrine cells. This gene product is a precursor to three biologically active peptides; vasostatin, pancreastatin, and parastatin. These peptides act as autocrine or paracrine negative modulators of the neuroendocrine system. Two other peptides, catestatin and chromofungin, have antimicrobial activity and antifungal activity, respectively. Two transcript variants encoding different isoforms have been found for this gene. [provided by RefSeq, Sep 2014],

Function : function:Pancreastatin strongly inhibits glucose induced insulin release from the pancreas.,miscellaneous:Binds calcium with a low-affinity.,PTM:Sulfated on tyrosine residues and/or contains sulfated glycans.,similarity:Belongs to the chromogranin/secretogranin protein family.,subcellular location:Neuroendocrine and endocrine secretory granules.,

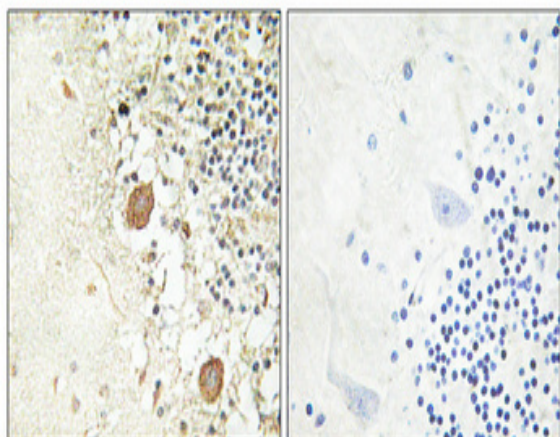
Subcellular Location : [Serpinin]: Secreted . Cytoplasmic vesicle, secretory vesicle . Pyroglutaminated serpinin localizes to secretory vesicle. .; Cytoplasmic vesicle, secretory vesicle . Cytoplasmic vesicle, secretory vesicle, neuronal dense core vesicle . Secreted . Associated with the secretory granule membrane through direct interaction to SCG3 that in turn binds to cholesterol-enriched lipid rafts in intragranular conditions. In pituitary gonadotropes, located in large secretory granules. .

Expression : GE-25 is found in the brain.

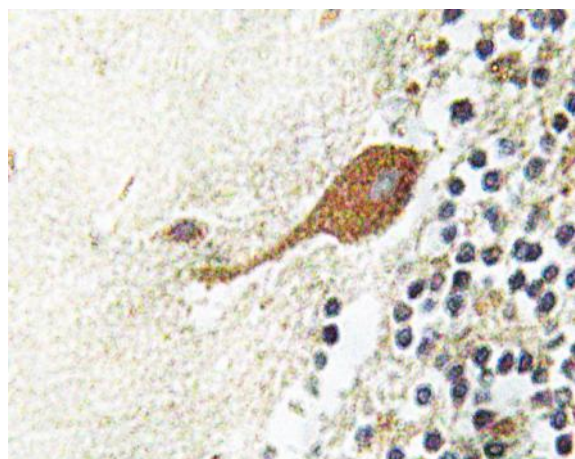
Products Images



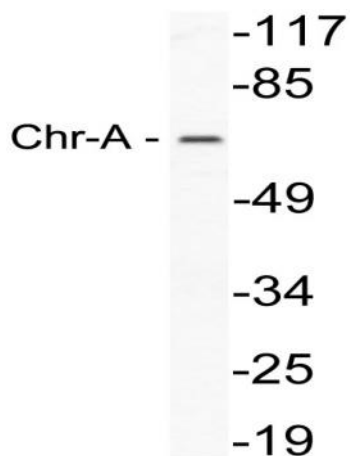
Western Blot analysis of various cells using Chr-A Polyclonal Antibody



Immunohistochemical analysis of paraffin-embedded Human brain. Antibody was diluted at 1:100(4° overnight). High-pressure and temperature Tris-EDTA,pH8.0 was used for antigen retrieval. Negative control (right) obtained from antibody was pre-absorbed by immunogen peptide.



Immunohistochemistry analysis of Chr-A antibody in paraffin-embedded human brain tissue.



Western blot analysis of lysate from A549 cells, using Chr-A antibody.