

## Cadherin-24 Polyclonal Antibody

<b>Catalog No :</b>	YT0600
<b>Reactivity :</b>	Human;Mouse
<b>Applications :</b>	IF;WB;ELISA
<b>Target :</b>	Cadherin-24
<b>Gene Name :</b>	CDH24
<b>Protein Name :</b>	Cadherin-24
<b>Human Gene Id :</b>	64403
<b>Human Swiss Prot No :</b>	Q86UP0
<b>Mouse Gene Id :</b>	239096
<b>Mouse Swiss Prot No :</b>	Q6PFX6
<b>Immunogen :</b>	The antiserum was produced against synthesized peptide derived from human CDH24. AA range:81-130
<b>Specificity :</b>	Cadherin-24 Polyclonal Antibody detects endogenous levels of Cadherin-24 protein.
<b>Formulation :</b>	Liquid in PBS containing 50% glycerol, 0.5% BSA and 0.02% sodium azide.
<b>Source :</b>	Polyclonal, Rabbit,IgG
<b>Dilution :</b>	WB 1:500-2000 IF 1:200 - 1:1000. ELISA: 1:10000. Not yet tested in other applications.
<b>Purification :</b>	The antibody was affinity-purified from rabbit antiserum by affinity-chromatography using epitope-specific immunogen.
<b>Concentration :</b>	1 mg/ml

**Storage Stability :** -15°C to -25°C/1 year(Do not lower than -25°C)

**Molecularweight :** 88kD

**Cell Pathway :** Adherens\_Junction

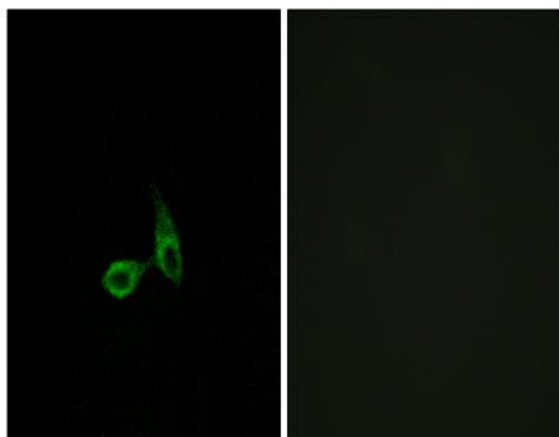
**Background :** function:Cadherins are calcium dependent cell adhesion proteins.,function:Cadherins are calcium dependent cell adhesion proteins. They preferentially interact with themselves in a homophilic manner in connecting cells; cadherins may thus contribute to the sorting of heterogeneous cell types. Cadherin-24 mediate strong cell-cell adhesion.,similarity:Contains 5 cadherin domains.,subunit:Associates with alpha-, beta- and delta-catenins.,

**Function :** function:Cadherins are calcium dependent cell adhesion proteins.,function:Cadherins are calcium dependent cell adhesion proteins. They preferentially interact with themselves in a homophilic manner in connecting cells; cadherins may thus contribute to the sorting of heterogeneous cell types. Cadherin-24 mediate strong cell-cell adhesion.,similarity:Contains 5 cadherin domains.,subunit:Associates with alpha-, beta- and delta-catenins.,

**Subcellular Location :** Cell membrane ; Single-pass type I membrane protein .

**Expression :** Blood,Colon,HeLa cells,Placenta,Salivary gland,Testis,Thyroid,

## Products Images



Immunofluorescence analysis of HepG2 cells, using CDH24 Antibody. The picture on the right is blocked with the synthesized peptide.