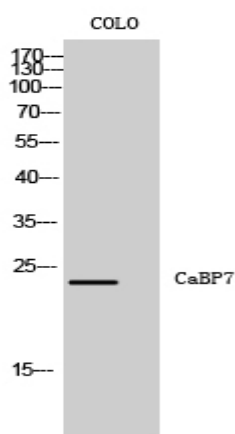


CaBP7 Polyclonal Antibody

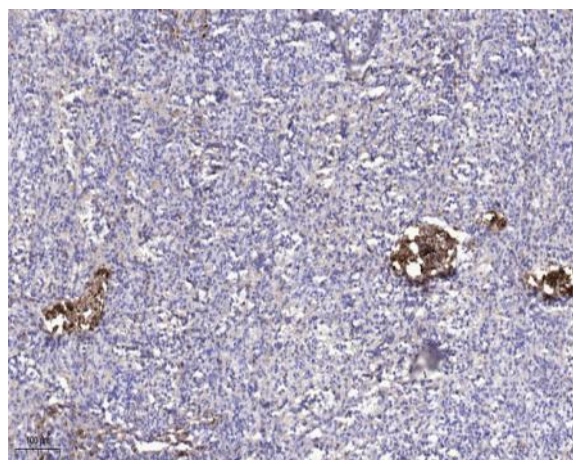
Catalog No :	YT0590
Reactivity :	Human;Mouse;Rat
Applications :	WB;IHC;IF;ELISA
Target :	CaBP7
Gene Name :	CABP7
Protein Name :	Calcium-binding protein 7
Human Gene Id :	164633
Human Swiss Prot No :	Q86V35
Mouse Gene Id :	192650
Mouse Swiss Prot No :	Q91ZM8
Rat Gene Id :	360970
Rat Swiss Prot No :	Q66H96
Immunogen :	The antiserum was produced against synthesized peptide derived from human CABP7. AA range:1-50
Specificity :	CaBP7 Polyclonal Antibody detects endogenous levels of CaBP7 protein.
Formulation :	Liquid in PBS containing 50% glycerol, 0.5% BSA and 0.02% sodium azide.
Source :	Polyclonal, Rabbit,IgG
Dilution :	WB 1:500 - 1:2000. IHC 1:100 - 1:300. ELISA: 1:10000.. IF 1:50-200
Purification :	The antibody was affinity-purified from rabbit antiserum by affinity-chromatography using epitope-specific immunogen.

Concentration :	<u>1 mg/ml</u>
Storage Stability :	<u>-15°C to -25°C/1 year(Do not lower than -25°C)</u>
Observed Band :	<u>25kD</u>
Background :	<u>similarity:Contains 2 EF-hand domains.,</u>
Function :	<u>similarity:Contains 2 EF-hand domains.,</u>
Subcellular Location :	<u>Golgi apparatus, trans-Golgi network membrane ; Single-pass type IV membrane protein . Cytoplasm, perinuclear region . Cell membrane ; Single-pass type IV membrane protein .</u>
Expression :	<u>Brain,Epithelium,</u>

Products Images



Western Blot analysis of COLO cells using CaBP7 Polyclonal Antibody diluted at 1:1000



Immunohistochemical analysis of paraffin-embedded human spleen. 1, Antibody was diluted at 1:200(4° overnight). 2, Tris-EDTA,pH9.0 was used for antigen retrieval. 3,Secondary antibody was diluted at 1:200(room temperature, 45min).