

## CEACAM21 Polyclonal Antibody

<b>Catalog No :</b>	YT0849
<b>Reactivity :</b>	Human
<b>Applications :</b>	WB;ELISA
<b>Target :</b>	CEACAM21
<b>Gene Name :</b>	CEACAM21
<b>Protein Name :</b>	Carcinoembryonic antigen-related cell adhesion molecule 21
<b>Human Gene Id :</b>	90273
<b>Human Swiss Prot No :</b>	Q3KPI0
<b>Immunogen :</b>	The antiserum was produced against synthesized peptide derived from human CEACAM21. AA range:171-220
<b>Specificity :</b>	CEACAM21 Polyclonal Antibody detects endogenous levels of CEACAM21 protein.
<b>Formulation :</b>	Liquid in PBS containing 50% glycerol, 0.5% BSA and 0.02% sodium azide.
<b>Source :</b>	Polyclonal, Rabbit,IgG
<b>Dilution :</b>	WB 1:500 - 1:2000. ELISA: 1:10000. Not yet tested in other applications.
<b>Purification :</b>	The antibody was affinity-purified from rabbit antiserum by affinity-chromatography using epitope-specific immunogen.
<b>Concentration :</b>	1 mg/ml
<b>Storage Stability :</b>	-15°C to -25°C/1 year(Do not lower than -25°C)
<b>Observed Band :</b>	32kD
<b>Background :</b>	similarity:Belongs to the immunoglobulin superfamily. CEA

---

family.,similarity:Contains 1 Ig-like C2-type (immunoglobulin-like) domain.,

---

**Function :**

similarity:Belongs to the immunoglobulin superfamily. CEA  
family.,similarity:Contains 1 Ig-like C2-type (immunoglobulin-like) domain.,

---

**Subcellular Location :**

Membrane ; Single-pass type I membrane protein .

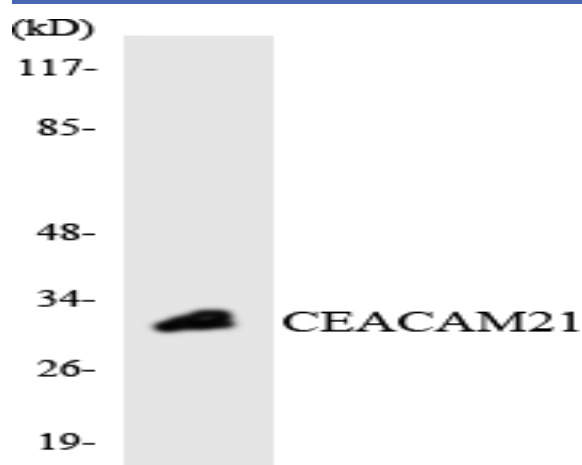
---

**Expression :**

Testis,

---

## Products Images



Western blot analysis of the lysates from HT-29 cells using CEACAM21 antibody.