

**BTBD6 Polyclonal Antibody**

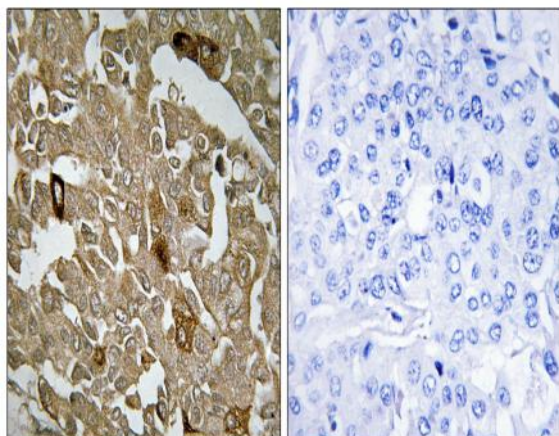
<b>Catalog No :</b>	YT0541
<b>Reactivity :</b>	Human;Mouse
<b>Applications :</b>	WB;IHC;IF;ELISA
<b>Target :</b>	BTBD6
<b>Gene Name :</b>	BTBD6
<b>Protein Name :</b>	BTB/POZ domain-containing protein 6
<b>Human Gene Id :</b>	90135
<b>Human Swiss Prot No :</b>	Q96KE9
<b>Mouse Gene Id :</b>	399566
<b>Mouse Swiss Prot No :</b>	Q8K2J9
<b>Immunogen :</b>	The antiserum was produced against synthesized peptide derived from human BTBD6. AA range:91-140
<b>Specificity :</b>	BTBD6 Polyclonal Antibody detects endogenous levels of BTBD6 protein.
<b>Formulation :</b>	Liquid in PBS containing 50% glycerol, 0.5% BSA and 0.02% sodium azide.
<b>Source :</b>	Polyclonal, Rabbit,IgG
<b>Dilution :</b>	WB 1:500 - 1:2000. IHC 1:100 - 1:300. ELISA: 1:10000.. IF 1:50-200
<b>Purification :</b>	The antibody was affinity-purified from rabbit antiserum by affinity-chromatography using epitope-specific immunogen.
<b>Concentration :</b>	1 mg/ml
<b>Storage Stability :</b>	-15°C to -25°C/1 year(Do not lower than -25°C)

---

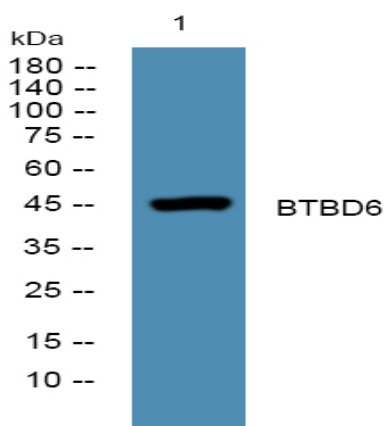
<b>Observed Band :</b>	<u>45kD</u>
<b>Background :</b>	<u>similarity:Contains 1 BTB (POZ) domain.,tissue specificity:Expressed in lens.,</u>
<b>Function :</b>	<u>similarity:Contains 1 BTB (POZ) domain.,tissue specificity:Expressed in lens.,</u>
<b>Subcellular Location :</b>	<u>Cytoplasm . Found in punctated bodies in the cytoplasm. .</u>
<b>Expression :</b>	<u>Expressed in lens.</u>

---

## Products Images



Immunohistochemistry analysis of paraffin-embedded human breast carcinoma tissue, using BTBD6 Antibody. The picture on the right is blocked with the synthesized peptide.



Western blot analysis of lysates from SH-SY5Y cells, primary antibody was diluted at 1:1000, 4° over night