

**BSX Polyclonal Antibody**

<b>Catalog No :</b>	YT0540
<b>Reactivity :</b>	Human;Mouse;Rat
<b>Applications :</b>	WB;ELISA
<b>Target :</b>	BSX
<b>Gene Name :</b>	BSX
<b>Protein Name :</b>	Brain-specific homeobox protein homolog
<b>Human Gene Id :</b>	390259
<b>Human Swiss Prot No :</b>	Q3C1V8
<b>Mouse Gene Id :</b>	244813
<b>Mouse Swiss Prot No :</b>	Q810B3
<b>Immunogen :</b>	Synthesized peptide derived from BSX . at AA range: 150-230
<b>Specificity :</b>	BSX Polyclonal Antibody detects endogenous levels of BSX protein.
<b>Formulation :</b>	Liquid in PBS containing 50% glycerol, 0.5% BSA and 0.02% sodium azide.
<b>Source :</b>	Polyclonal, Rabbit,IgG
<b>Dilution :</b>	WB 1:500 - 1:2000. ELISA: 1:5000. Not yet tested in other applications.
<b>Purification :</b>	The antibody was affinity-purified from rabbit antiserum by affinity-chromatography using epitope-specific immunogen.
<b>Concentration :</b>	1 mg/ml
<b>Storage Stability :</b>	-15°C to -25°C/1 year(Do not lower than -25°C)

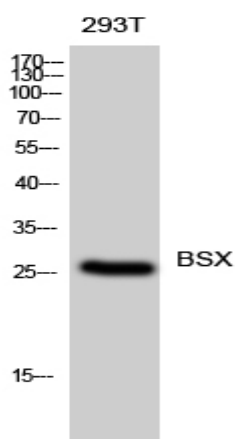
**Observed Band :** 26kD

**Background :** function:DNA binding protein that function as transcriptional activator. Is essential for normal postnatal growth and nursing. Is an essential factor for neuronal neuropeptide Y and agouti-related peptide function and locomotory behavior in the control of energy balance.,online information:Of fidgets and food -Issue 85 of August 2007,similarity:Belongs to the distal-less homeobox family.,similarity:Contains 1 homeobox DNA-binding domain.,

**Function :** function:DNA binding protein that function as transcriptional activator. Is essential for normal postnatal growth and nursing. Is an essential factor for neuronal neuropeptide Y and agouti-related peptide function and locomotory behavior in the control of energy balance.,online information:Of fidgets and food -Issue 85 of August 2007,similarity:Belongs to the distal-less homeobox family.,similarity:Contains 1 homeobox DNA-binding domain.,

**Subcellular Location :** Nucleus .

## Products Images



Western Blot analysis of 293T cells using BSX Polyclonal Antibody diluted at 1:500