

BMP-8A Polyclonal Antibody

Catalog No :	YT0505
Reactivity :	Human;Mouse
Applications :	WB;IHC;IF;ELISA
Target :	BMP-8A
Fields :	>>Cytokine-cytokine receptor interaction;>>TGF-beta signaling pathway;>>Hippo signaling pathway;>>Thermogenesis
Gene Name :	BMP8A
Protein Name :	Bone morphogenetic protein 8A
Human Gene Id :	353500
Human Swiss Prot No :	Q7Z5Y6
Mouse Swiss Prot No :	P34821
Immunogen :	The antiserum was produced against synthesized peptide derived from human BMP8A. AA range:253-302
Specificity :	BMP-8A Polyclonal Antibody detects endogenous levels of BMP-8A protein.
Formulation :	Liquid in PBS containing 50% glycerol, 0.5% BSA and 0.02% sodium azide.
Source :	Polyclonal, Rabbit,IgG
Dilution :	WB 1:500 - 1:2000. IHC 1:100 - 1:300. IF 1:200 - 1:1000. ELISA: 1:20000. Not yet tested in other applications.
Purification :	The antibody was affinity-purified from rabbit antiserum by affinity-chromatography using epitope-specific immunogen.
Concentration :	1 mg/ml

Storage Stability : -15°C to -25°C/1 year(Do not lower than -25°C)

Observed Band : 45-55kD

Cell Pathway : Hedgehog;TGF-beta;

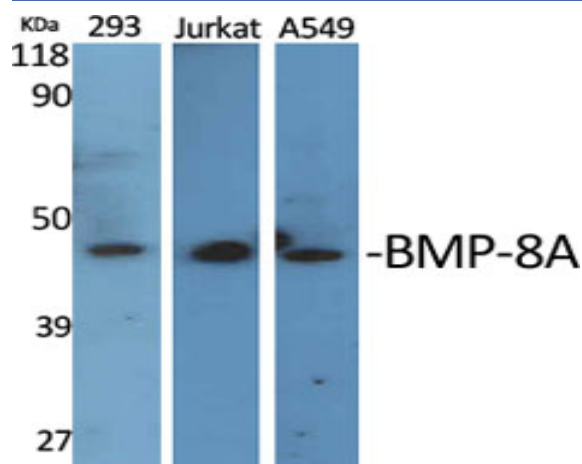
Background : This gene encodes a secreted ligand of the TGF-beta (transforming growth factor-beta) superfamily of proteins. Ligands of this family bind various TGF-beta receptors leading to recruitment and activation of SMAD family transcription factors that regulate gene expression. The encoded preproprotein is proteolytically processed to generate each subunit of the disulfide-linked homodimer. This protein may play a role in development of the reproductive system. This gene may have arose from a gene duplication event and its gene duplicate is also present on chromosome 1. [provided by RefSeq, Jul 2016],

Function : function:Induces cartilage and bone formation. May be the osteoinductive factor responsible for the phenomenon of epithelial osteogenesis. Plays a role in calcium regulation and bone homeostasis.,online information:Bone morphogenetic protein 8A entry,similarity:Belongs to the TGF-beta family.,subunit:Homodimer; disulfide-linked.,

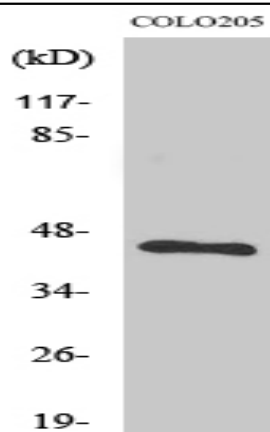
Subcellular Location : Secreted .

Expression : Brain,Hippocampus,Thyroid gland,

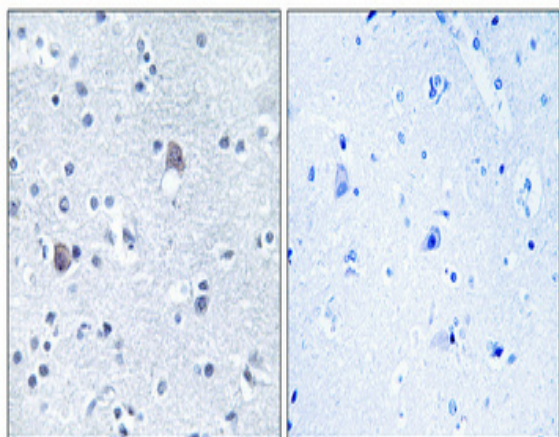
Products Images



Western Blot analysis of various cells using BMP-8A Polyclonal Antibody



Western Blot analysis of COLO205 cells using BMP-8A Polyclonal Antibody



Immunohistochemical analysis of paraffin-embedded Human brain. Antibody was diluted at 1:100(4° overnight). High-pressure and temperature Tris-EDTA,pH8.0 was used for antigen retrieval. Negative control (right) obtained from antibody was pre-absorbed by immunogen peptide.



Immunofluorescence analysis of A549 cells, using BMP8A Antibody. The picture on the right is blocked with the synthesized peptide.