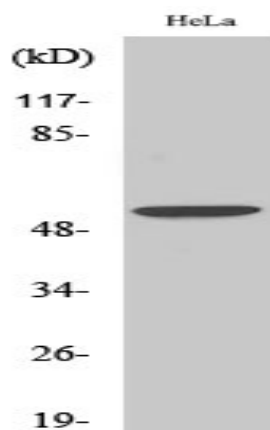


BMP-3 Polyclonal Antibody

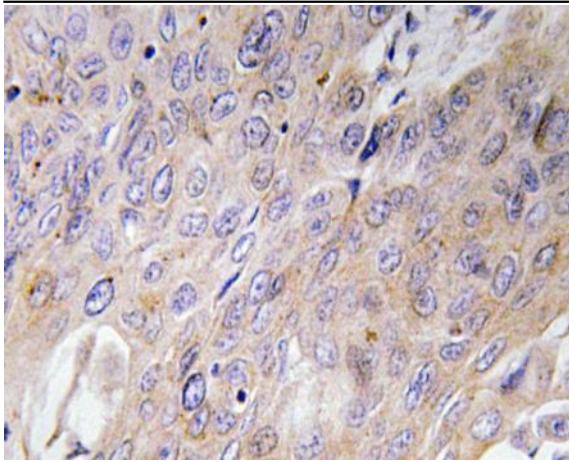
| | |
|------------------------------|---|
| Catalog No : | YT0499 |
| Reactivity : | Human;Mouse;Rat |
| Applications : | WB;IHC;IF;ELISA |
| Target : | BMP-3 |
| Fields : | >>Cytokine-cytokine receptor interaction |
| Gene Name : | BMP3 |
| Protein Name : | Bone morphogenetic protein 3 |
| Human Gene Id : | 651 |
| Human Swiss Prot No : | P12645 |
| Mouse Gene Id : | 110075 |
| Mouse Swiss Prot No : | Q8BHE5 |
| Rat Gene Id : | 25667 |
| Rat Swiss Prot No : | P49002 |
| Immunogen : | The antiserum was produced against synthesized peptide derived from human BMP-3. AA range:257-306 |
| Specificity : | BMP-3 Polyclonal Antibody detects endogenous levels of BMP-3 protein. |
| Formulation : | Liquid in PBS containing 50% glycerol, 0.5% BSA and 0.02% sodium azide. |
| Source : | Polyclonal, Rabbit,IgG |
| Dilution : | WB 1:500 - 1:2000. IHC 1:100 - 1:300. ELISA: 1:40000.. IF 1:50-200 |

| | |
|-------------------------------|---|
| Purification : | The antibody was affinity-purified from rabbit antiserum by affinity-chromatography using epitope-specific immunogen. |
| Concentration : | 1 mg/ml |
| Storage Stability : | -15°C to -25°C/1 year(Do not lower than -25°C) |
| Observed Band : | 53kD |
| Background : | This gene encodes a secreted ligand of the TGF-beta (transforming growth factor-beta) superfamily of proteins. Ligands of this family bind various TGF-beta receptors leading to recruitment and activation of SMAD family transcription factors that regulate gene expression. The encoded preprotein is proteolytically processed to generate each subunit of the disulfide-linked homodimer. This protein suppresses osteoblast differentiation, and negatively regulates bone density, by modulating TGF-beta receptor availability to other ligands. [provided by RefSeq, Jul 2016], |
| Function : | function:Negatively regulates bone density. Antagonizes the ability of certain osteogenic BMPs to induce osteoprogenitor differentiation and ossification.,induction:Highly expressed in fracture tissue, particularly in osteoblasts, osteoclasts and chondroblasts.,online information:Bone morphogenetic protein 3 entry,similarity:Belongs to the TGF-beta family.,subunit:Homodimer; disulfide-linked.,tissue specificity:Expressed in adult and fetal cartilage., |
| Subcellular Location : | Secreted. |
| Expression : | Expressed in adult and fetal cartilage. |

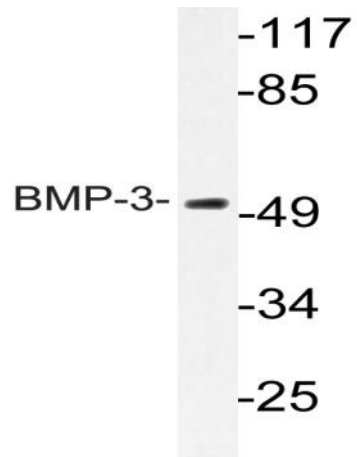
Products Images



Western Blot analysis of various cells using BMP-3 Polyclonal Antibody diluted at 1:2000



Immunohistochemistry analysis of BMP-3 antibody in paraffin-embedded human lung carcinoma tissue.



Western blot analysis of lysate from HeLa cells, using BMP-3 antibody.