

## BET3 Polyclonal Antibody

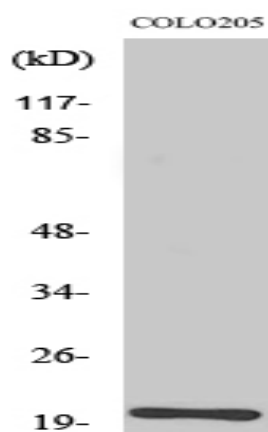
<b>Catalog No :</b>	YT0486
<b>Reactivity :</b>	Human;Mouse;Rat
<b>Applications :</b>	WB;IHC;IF;ELISA
<b>Target :</b>	BET3
<b>Gene Name :</b>	TRAPPC3
<b>Protein Name :</b>	Trafficking protein particle complex subunit 3
<b>Human Gene Id :</b>	27095
<b>Human Swiss Prot No :</b>	O43617
<b>Mouse Gene Id :</b>	27096
<b>Mouse Swiss Prot No :</b>	O55013
<b>Rat Gene Id :</b>	362599
<b>Rat Swiss Prot No :</b>	Q5U1Z2
<b>Immunogen :</b>	The antiserum was produced against synthesized peptide derived from human TRAPPC3. AA range:131-180
<b>Specificity :</b>	BET3 Polyclonal Antibody detects endogenous levels of BET3 protein.
<b>Formulation :</b>	Liquid in PBS containing 50% glycerol, 0.5% BSA and 0.02% sodium azide.
<b>Source :</b>	Polyclonal, Rabbit,IgG
<b>Dilution :</b>	WB 1:500 - 1:2000. IHC 1:100 - 1:300. ELISA: 1:5000.. IF 1:50-200
<b>Purification :</b>	The antibody was affinity-purified from rabbit antiserum by affinity-chromatography using epitope-specific immunogen.

---

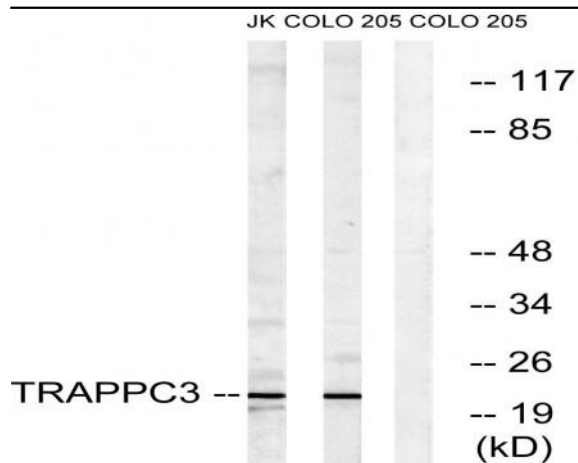
<b>Concentration :</b>	1 mg/ml
<b>Storage Stability :</b>	-15°C to -25°C/1 year(Do not lower than -25°C)
<b>Observed Band :</b>	22kD
<b>Background :</b>	trafficking protein particle complex 3(TRAPPC3) Homo sapiens This gene encodes a component of the trafficking protein particle complex, which tethers transport vesicles to the cis-Golgi membrane. The encoded protein participates in the regulation of transport from the endoplasmic reticulum to the Golgi apparatus. Alternative splicing results in multiple transcript variants. [provided by RefSeq, Aug 2012],
<b>Function :</b>	function:May play a role in vesicular transport from endoplasmic reticulum to Golgi.,similarity:Belongs to the TRAPP small subunits family. BET3 subfamily.,subunit:Homodimer. Heterodimer with TRAPPC6A. Part of the multisubunit TRAPP (transport protein particle) complex.,
<b>Subcellular Location :</b>	Golgi apparatus, cis-Golgi network . Endoplasmic reticulum .
<b>Expression :</b>	Colon,Leukemia,Placenta,

---

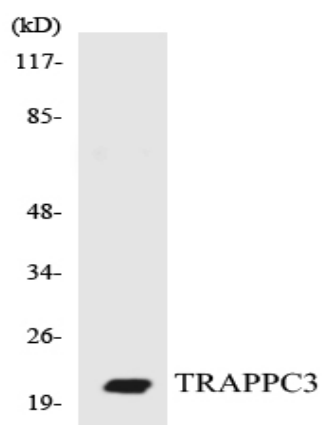
## Products Images



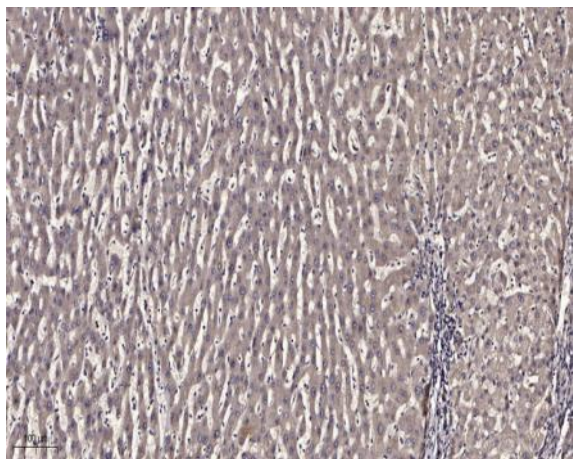
Western Blot analysis of various cells using BET3 Polyclonal Antibody diluted at 1:500



Western blot analysis of lysates from COLO and Jurkat cells, using TRAPPC3 Antibody. The lane on the right is blocked with the synthesized peptide.



Western blot analysis of the lysates from COLO205 cells using TRAPPC3 antibody.



Immunohistochemical analysis of paraffin-embedded human liver cancer. 1, Antibody was diluted at 1:200(4° overnight). 2, Tris-EDTA,pH9.0 was used for antigen retrieval. 3,Secondary antibody was diluted at 1:200(room temperature, 45min).