

CD137 Polyclonal Antibody

Catalog No :	YT0722
Reactivity :	Human;Rat;Mouse;
Applications :	WB;IF;ELISA
Target :	CD137
Fields :	>>Cytokine-cytokine receptor interaction
Gene Name :	TNFRSF9
Protein Name :	Tumor necrosis factor receptor superfamily member 9
Human Gene Id :	3604
Human Swiss Prot No :	Q07011
Mouse Swiss Prot No :	P20334
Immunogen :	The antiserum was produced against synthesized peptide derived from human TNFRSF9. AA range:101-150
Specificity :	CD137 Polyclonal Antibody detects endogenous levels of CD137 protein.
Formulation :	Liquid in PBS containing 50% glycerol, 0.5% BSA and 0.02% sodium azide.
Source :	Polyclonal, Rabbit,IgG
Dilution :	WB 1:500 - 1:2000. IF 1:200 - 1:1000. ELISA: 1:10000. Not yet tested in other applications.
Purification :	The antibody was affinity-purified from rabbit antiserum by affinity-chromatography using epitope-specific immunogen.
Concentration :	1 mg/ml
Storage Stability :	-15°C to -25°C/1 year(Do not lower than -25°C)

Observed Band : 27kD

Cell Pathway : Cytokine-cytokine receptor interaction;

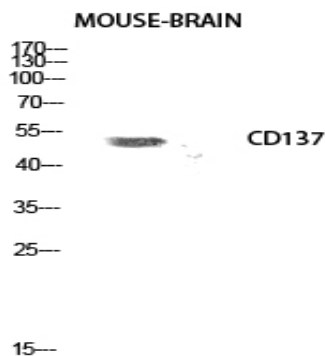
Background : The protein encoded by this gene is a member of the TNF-receptor superfamily. This receptor contributes to the clonal expansion, survival, and development of T cells. It can also induce proliferation in peripheral monocytes, enhance T cell apoptosis induced by TCR/CD3 triggered activation, and regulate CD28 co-stimulation to promote Th1 cell responses. The expression of this receptor is induced by lymphocyte activation. TRAF adaptor proteins have been shown to bind to this receptor and transduce the signals leading to activation of NF-kappaB. [provided by RefSeq, Jul 2008],

Function : function:Receptor for TNFSF14/4-1BBL. Possibly active during T cell activation.,similarity:Contains 4 TNFR-Cys repeats.,subunit:Interacts with TRAF1, TRAF2 and TRAF3. Interacts with LRR-repeat protein 1/LRR-1.,tissue specificity:Expressed on the surface of activated T-cells.,

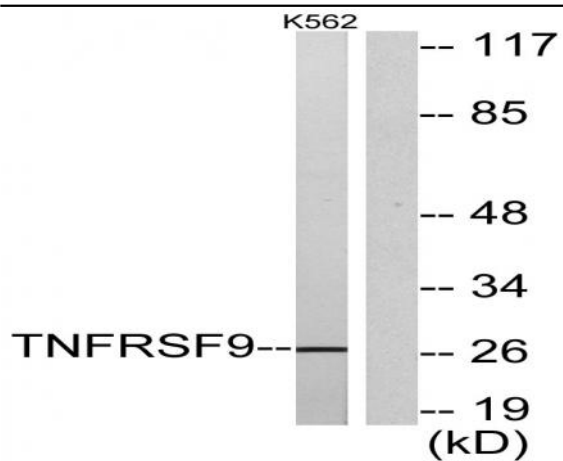
Subcellular Location : Membrane; Single-pass type I membrane protein.

Expression : Expressed on the surface of activated T-cells.

Products Images



Western Blot analysis of mouse-brain cells using CD137 Polyclonal Antibody diluted at 1:500



Western blot analysis of lysates from K562 cells, using TNFRSF9 Antibody. The lane on the right is blocked with the synthesized peptide.