

ATF-7 Polyclonal Antibody

Catalog No :	YT0390
Reactivity :	Human;Mouse
Applications :	WB;IHC;IF;ELISA
Target :	ATF-7
Gene Name :	ATF7
Protein Name :	Cyclic AMP-dependent transcription factor ATF-7
Human Gene Id :	11016
Human Swiss Prot No :	P17544
Mouse Gene Id :	223922
Mouse Swiss Prot No :	Q8R0S1
Immunogen :	The antiserum was produced against synthesized peptide derived from human ATF7. AA range:41-90
Specificity :	ATF-7 Polyclonal Antibody detects endogenous levels of ATF-7 protein.
Formulation :	Liquid in PBS containing 50% glycerol, 0.5% BSA and 0.02% sodium azide.
Source :	Polyclonal, Rabbit,IgG
Dilution :	WB 1:500 - 1:2000. IHC 1:100 - 1:300. IF 1:200 - 1:1000. ELISA: 1:20000. Not yet tested in other applications.
Purification :	The antibody was affinity-purified from rabbit antiserum by affinity-chromatography using epitope-specific immunogen.
Concentration :	1 mg/ml
Storage Stability :	-15°C to -25°C/1 year(Do not lower than -25°C)

Observed Band : 52kD

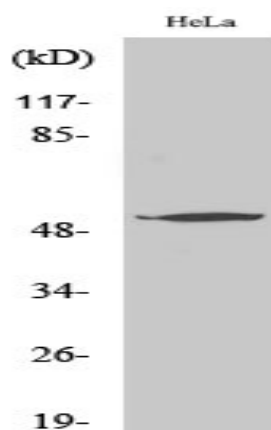
Background : function: Binds the cAMP response element (CRE) (consensus: 5'-GTGACGT[AG][AG]-3'), a sequence present in many viral and cellular promoters., similarity: Belongs to the bZIP family., similarity: Contains 1 bZIP domain., similarity: Contains 1 C2H2-type zinc finger., subunit: Binds DNA as a dimer.,

Function : function: Binds the cAMP response element (CRE) (consensus: 5'-GTGACGT[AG][AG]-3'), a sequence present in many viral and cellular promoters., similarity: Belongs to the bZIP family., similarity: Contains 1 bZIP domain., similarity: Contains 1 C2H2-type zinc finger., subunit: Binds DNA as a dimer.,

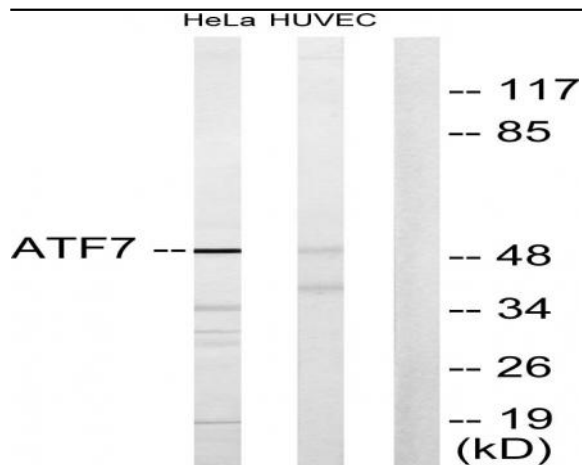
Subcellular Location : Nucleus . Nucleus, nucleoplasm . Chromosome, telomere . Mainly nucleoplasmic. Restricted distribution to the perinuclear region. The sumoylated form locates to the nuclear periphery.; [Isoform 5]: Cytoplasm .

Expression : Expressed in various tissues including heart, brain, placenta, lung and skeletal muscle. Highest levels in skeletal muscle. Lowest in lung and placenta. ; [Isoform 4]: Strongly expressed in skeletal muscle. Also expressed at lower levels in heart and lung.

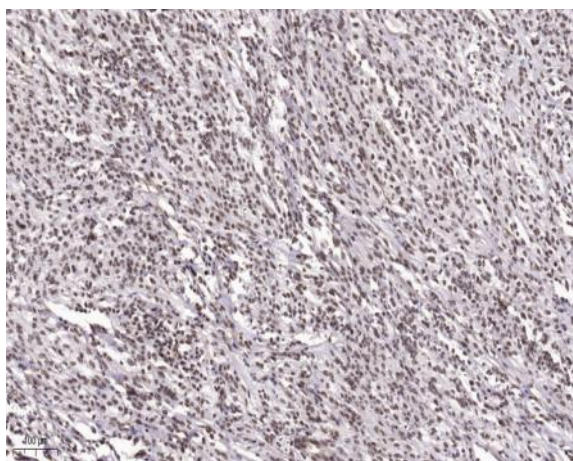
Products Images



Western Blot analysis of various cells using ATF-7 Polyclonal Antibody



Western blot analysis of lysates from HeLa and HUVEC cells, using ATF7 Antibody. The lane on the right is blocked with the synthesized peptide.



Immunohistochemical analysis of paraffin-embedded human Small intestinal stromal tumor. 1, Tris-EDTA, pH 9.0 was used for antigen retrieval. 2 Antibody was diluted at 1:200 (4° overnight). 3, Secondary antibody was diluted at 1:200 (room temperature, 45 min).