

## ATF-3 Polyclonal Antibody

<b>Catalog No :</b>	YT0387
<b>Reactivity :</b>	Human;Mouse;Rat
<b>Applications :</b>	WB;IHC;IF;ELISA
<b>Target :</b>	ATF-3
<b>Gene Name :</b>	ATF3
<b>Protein Name :</b>	Cyclic AMP-dependent transcription factor ATF-3
<b>Human Gene Id :</b>	467
<b>Human Swiss Prot No :</b>	P18847
<b>Mouse Gene Id :</b>	11910
<b>Mouse Swiss Prot No :</b>	Q60765
<b>Rat Gene Id :</b>	25389
<b>Rat Swiss Prot No :</b>	P29596
<b>Immunogen :</b>	The antiserum was produced against synthesized peptide derived from human ATF3. AA range:131-180
<b>Specificity :</b>	ATF-3 Polyclonal Antibody detects endogenous levels of ATF-3 protein.
<b>Formulation :</b>	Liquid in PBS containing 50% glycerol, 0.5% BSA and 0.02% sodium azide.
<b>Source :</b>	Polyclonal, Rabbit,IgG
<b>Dilution :</b>	WB 1:500-2000;IHC 1:100-500;IF ICC 1:100-500;ELISA 1:5000-20000
<b>Purification :</b>	The antibody was affinity-purified from rabbit antiserum by affinity-chromatography using epitope-specific immunogen.

**Concentration :** 1 mg/ml

**Storage Stability :** -15°C to -25°C/1 year(Do not lower than -25°C)

**Observed Band :** 21kD

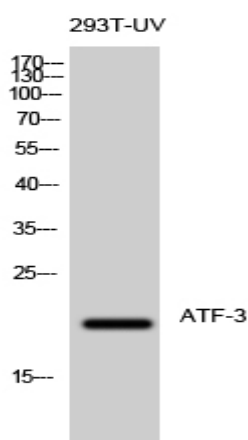
**Background :** activating transcription factor 3(ATF3) Homo sapiens This gene encodes a member of the mammalian activation transcription factor/cAMP responsive element-binding (CREB) protein family of transcription factors. This gene is induced by a variety of signals, including many of those encountered by cancer cells, and is involved in the complex process of cellular stress response. Multiple transcript variants encoding different isoforms have been found for this gene. It is possible that alternative splicing of this gene may be physiologically important in the regulation of target genes. [provided by RefSeq, Apr 2011],

**Function :** function:This protein binds the cAMP response element (CRE) (consensus: 5'-GTGACGT[AC][AG]-3'), a sequence present in many viral and cellular promoters. Represses transcription from promoters with ATF sites. It may repress transcription by stabilizing the binding of inhibitory cofactors at the promoter. Isoform 2 activates transcription presumably by sequestering inhibitory cofactors away from the promoters.,similarity:Belongs to the bZIP family.,similarity:Belongs to the bZIP family. ATF subfamily.,similarity:Contains 1 bZIP domain.,subunit:Binds DNA as a homodimer or a heterodimer.,

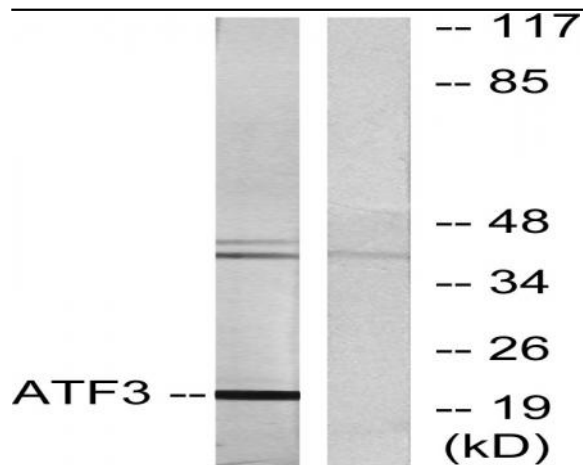
**Subcellular Location :** Nucleus .

**Expression :** Amygdala,Brain,Cerebellum,Muscle,

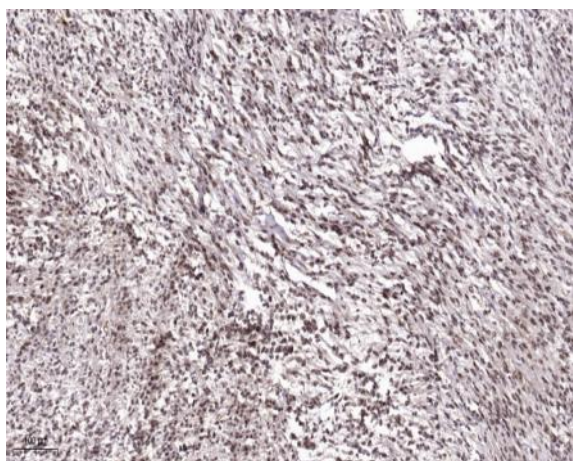
## Products Images



Western Blot analysis of 293T-UV cells using ATF-3 Polyclonal Antibody diluted at 1:500 cells nucleus extracted by Minute TM Cytoplasmic and Nuclear Fractionation kit (SC-003, Inventibiotech, MN, USA).



Western blot analysis of lysates from RAW264.7 cells, using ATF3 Antibody. The lane on the right is blocked with the synthesized peptide.



Immunohistochemical analysis of paraffin-embedded human Colon cancer. 1, Antibody was diluted at 1:200(4° overnight). 2, Tris-EDTA,pH9.0 was used for antigen retrieval. 3,Secondary antibody was diluted at 1:200(room temperature, 45min).