

CaMKII β / γ / δ Polyclonal Antibody

Catalog No :	YT0626
Reactivity :	Human;Mouse;Rat;Pig
Applications :	WB;IHC;IF;ELISA
Target :	CaMKII β / γ / δ
Fields :	>>ErbB signaling pathway;>>Calcium signaling pathway;>>cAMP signaling pathway;>>HIF-1 signaling pathway;>>Oocyte meiosis;>>Necroptosis;>>Adrenergic signaling in cardiomyocytes;>>Wnt signaling pathway;>>Axon guidance;>>Circadian entrainment;>>Long-term potentiation;>>Neurotrophin signaling pathway;>>Cholinergic synapse;>>Dopaminergic synapse;>>Olfactory transduction;>>Inflammatory mediator regulation of TRP channels;>>Insulin secretion;>>GnRH signaling pathway;>>Melanogenesis;>>Oxytocin signaling pathway;>>Glucagon signaling pathway;>>Aldosterone synthesis and secretion;>>Cushing syndrome;>>Gastric acid secretion;>>Parkinson disease;>>Pathways of neurodegeneration - multiple diseases;>>Amphetamine addiction;>>Tuberculosis;>>Pathways in cancer;>>Proteoglycans in cancer;>>Glioma;>>Diabetic cardiomyopathy;>>Lipid and atherosclerosis
Gene Name :	CAMK2B
Protein Name :	Calcium/calmodulin-dependent protein kinase type II subunit beta
Human Gene Id :	816/818/817
Human Swiss Prot No :	Q13554/Q13555/Q13557
Mouse Gene Id :	12323/12325/108058
Rat Gene Id :	24245/171140/24246
Rat Swiss Prot No :	P08413/P11730/P15791
Immunogen :	The antiserum was produced against synthesized peptide derived from human CaMK2-beta/gamma/delta. AA range:253-302

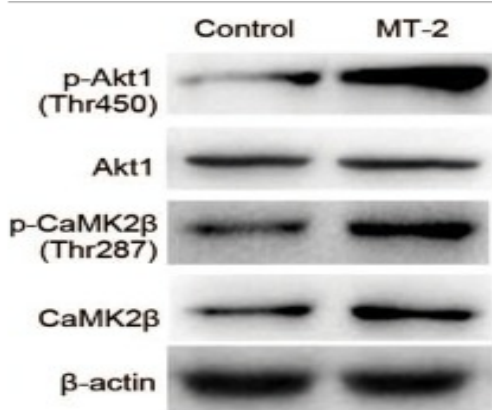
Specificity :	CaMKII $\beta/\gamma/\delta$ Polyclonal Antibody detects endogenous levels of CaMKII $\beta/\gamma/\delta$ protein.
Formulation :	Liquid in PBS containing 50% glycerol, 0.5% BSA and 0.02% sodium azide.
Source :	Polyclonal, Rabbit,IgG
Dilution :	WB 1:500 - 1:2000. IHC 1:100 - 1:300. ELISA: 1:5000.. IF 1:50-200
Purification :	The antibody was affinity-purified from rabbit antiserum by affinity-chromatography using epitope-specific immunogen.
Concentration :	1 mg/ml
Storage Stability :	-15°C to -25°C/1 year(Do not lower than -25°C)
Observed Band :	50kD,65kD
Cell Pathway :	ErbB_HER;Calcium;Oocyte meiosis;WNT;WNT-T CELLLong-term potentiation;Neurotrophin;Olfactory transduction;GnRH;Melanogenesis;Glioma;
Background :	The product of this gene belongs to the serine/threonine protein kinase family and to the Ca(2+)/calmodulin-dependent protein kinase subfamily. Calcium signaling is crucial for several aspects of plasticity at glutamatergic synapses. In mammalian cells, the enzyme is composed of four different chains: alpha, beta, gamma, and delta. The product of this gene is a beta chain. It is possible that distinct isoforms of this chain have different cellular localizations and interact differently with calmodulin. Alternative splicing results in multiple transcript variants. [provided by RefSeq, May 2014],
Function :	alternative products:The variable region of the CAMK2B protein is encoded by at least 7 exons (V1 to V7). Alternative splicing within this region gives rise to CAMK2B isoforms,catalytic activity:ATP + a protein = ADP + a phosphoprotein.,enzyme regulation:Autophosphorylation of CAMK2 plays an important role in the regulation of the kinase activity.,function:CaM-kinase II (CAMK2) is a prominent kinase in the central nervous system that may function in long-term potentiation and neurotransmitter release. Member of the NMDAR signaling complex in excitatory synapses, it may regulate NMDAR-dependent potentiation of the AMPAR and synaptic plasticity.,similarity:Belongs to the protein kinase superfamily.,similarity:Belongs to the protein kinase superfamily. CAMK Ser/Thr protein kinase family. CaMK subfamily.,similarity:Contains 1 protein kinase domain.,subunit:CAMK2 is composed of four different
Subcellular Location :	Cytoplasm, cytoskeleton . Cytoplasm, cytoskeleton, microtubule organizing center, centrosome . Sarcoplasmic reticulum membrane ; Peripheral membrane protein ; Cytoplasmic side . Cell junction, synapse . In slow-twitch muscle, evenly

distributed between longitudinal SR and junctional SR.

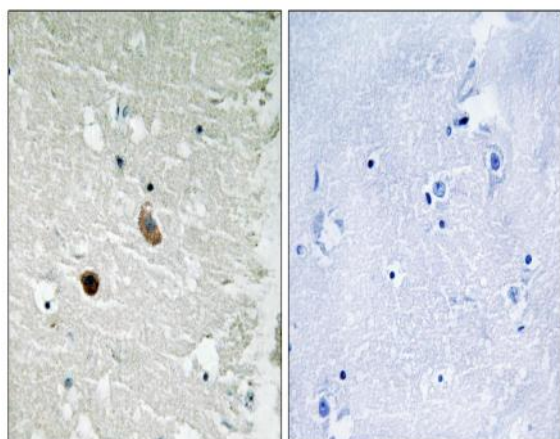
Expression :

Widely expressed. Expressed in adult and fetal brain. Expression is slightly lower in fetal brain. Expressed in skeletal muscle.

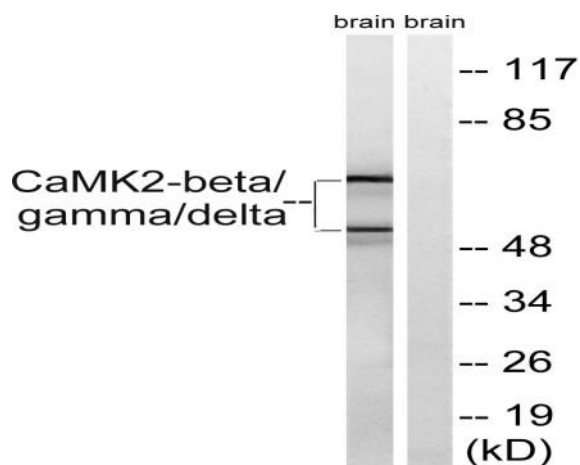
Products Images



Zhou, Dong-Dong, et al. "Metallothionein-2 is associated with the amelioration of asthmatic pulmonary function by acupuncture through protein phosphorylation." *Biomedicine & Pharmacotherapy* 123 (2020): 109785.



Immunohistochemistry analysis of paraffin-embedded human brain tissue, using CaMK2-beta/gamma/delta Antibody. The picture on the right is blocked with the synthesized peptide.



Western blot analysis of lysates from rat brain cells, using CaMK2-beta/gamma/delta Antibody. The lane on the right is blocked with the synthesized peptide.