

## CAGE-1 Polyclonal Antibody

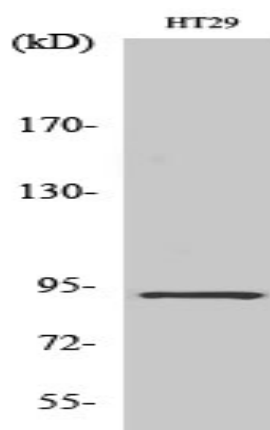
<b>Catalog No :</b>	YT0606
<b>Reactivity :</b>	Human;Rat;Mouse;
<b>Applications :</b>	WB;IHC;IF;ELISA
<b>Target :</b>	CAGE-1
<b>Gene Name :</b>	CAGE1
<b>Protein Name :</b>	Cancer-associated gene 1 protein
<b>Human Gene Id :</b>	285782
<b>Human Swiss Prot No :</b>	Q8TC20
<b>Mouse Swiss Prot No :</b>	Q5IR70
<b>Immunogen :</b>	The antiserum was produced against synthesized peptide derived from human CAGE1. AA range:711-760
<b>Specificity :</b>	CAGE-1 Polyclonal Antibody detects endogenous levels of CAGE-1 protein.
<b>Formulation :</b>	Liquid in PBS containing 50% glycerol, 0.5% BSA and 0.02% sodium azide.
<b>Source :</b>	Polyclonal, Rabbit,IgG
<b>Dilution :</b>	WB 1:500 - 1:2000. IHC 1:100 - 1:300. ELISA: 1:40000.. IF 1:50-200
<b>Purification :</b>	The antibody was affinity-purified from rabbit antiserum by affinity-chromatography using epitope-specific immunogen.
<b>Concentration :</b>	1 mg/ml
<b>Storage Stability :</b>	-15°C to -25°C/1 year(Do not lower than -25°C)
<b>Observed Band :</b>	90kD

**Background :** tissue specificity:Testis-specific expression in normal tissues, but wide expression among cancer tissues and cell lines.,

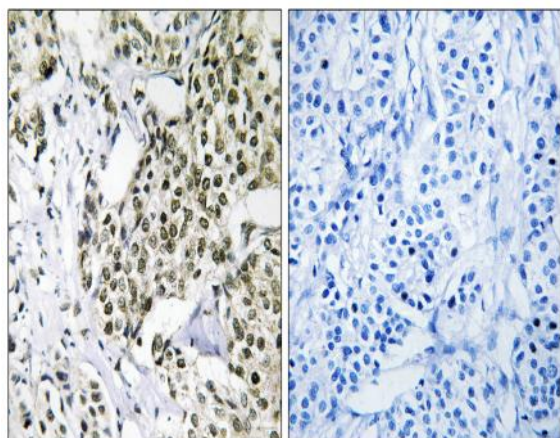
**Function :** tissue specificity:Testis-specific expression in normal tissues, but wide expression among cancer tissues and cell lines.,

**Expression :** Testis-specific expression in normal tissues, but wide expression among cancer tissues and cell lines.

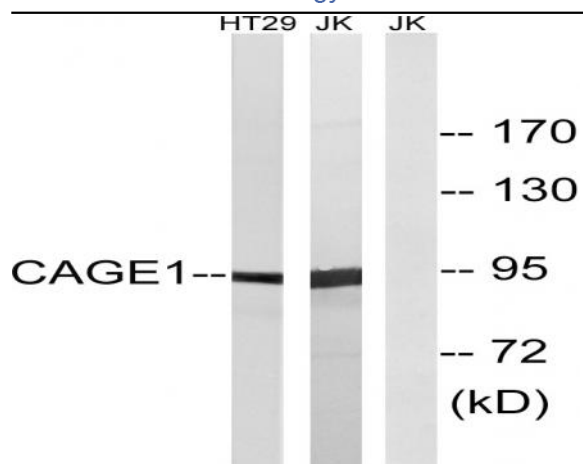
## Products Images



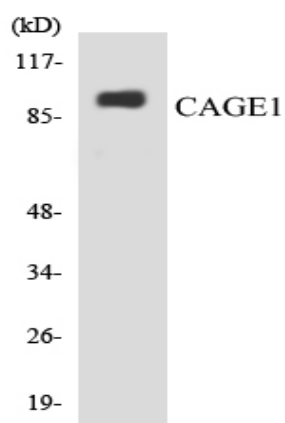
Western Blot analysis of various cells using CAGE-1 Polyclonal Antibody diluted at 1:2000



Immunohistochemistry analysis of paraffin-embedded human breast carcinoma tissue, using CAGE1 Antibody. The picture on the right is blocked with the synthesized peptide.



Western blot analysis of lysates from HT-29 and Jurkat cells, using CAGE1 Antibody. The lane on the right is blocked with the synthesized peptide.



Western blot analysis of the lysates from HepG2 cells using CAGE1 antibody.