

**CAF-1 p60 Polyclonal Antibody**

<b>Catalog No :</b>	YT0605
<b>Reactivity :</b>	Human;Mouse;Rat
<b>Applications :</b>	WB;IHC;IF;ELISA
<b>Target :</b>	CAF-1 p60
<b>Gene Name :</b>	CHAF1B
<b>Protein Name :</b>	Chromatin assembly factor 1 subunit B
<b>Human Gene Id :</b>	8208
<b>Human Swiss Prot No :</b>	Q13112
<b>Mouse Gene Id :</b>	110749
<b>Mouse Swiss Prot No :</b>	Q9D0N7
<b>Immunogen :</b>	The antiserum was produced against synthesized peptide derived from human CAF1B. AA range:71-120
<b>Specificity :</b>	CAF-1 p60 Polyclonal Antibody detects endogenous levels of CAF-1 p60 protein.
<b>Formulation :</b>	Liquid in PBS containing 50% glycerol, 0.5% BSA and 0.02% sodium azide.
<b>Source :</b>	Polyclonal, Rabbit,IgG
<b>Dilution :</b>	WB 1:500 - 1:2000. IHC 1:100 - 1:300. IF 1:200 - 1:1000. ELISA: 1:20000. Not yet tested in other applications.
<b>Purification :</b>	The antibody was affinity-purified from rabbit antiserum by affinity-chromatography using epitope-specific immunogen.
<b>Concentration :</b>	1 mg/ml

**Storage Stability :** -15°C to -25°C/1 year(Do not lower than -25°C)

**Observed Band :** 61kD

**Cell Pathway :** NF\_kappaB

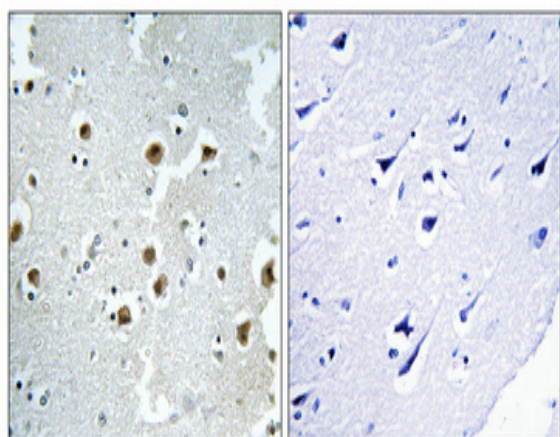
**Background :** Chromatin assembly factor I (CAF-I) is required for the assembly of histone octamers onto newly-replicated DNA. CAF-I is composed of three protein subunits, p50, p60, and p150. The protein encoded by this gene corresponds to the p60 subunit and is required for chromatin assembly after replication. The encoded protein is differentially phosphorylated in a cell cycle-dependent manner. In addition, it is normally found in the nucleus except during mitosis, when it is released into the cytoplasm. This protein is a member of the WD-repeat HIR1 family and may also be involved in DNA repair. [provided by RefSeq, Jul 2008],

**Function :** developmental stage:Active complex is found in G1 , S and G2 phases.,function:Complex that is thought to mediate chromatin assembly in DNA replication and DNA repair. Assembles histone octamers onto replicating DNA in vitro. CAF-1 performs the first step of the nucleosome assembly process, bringing newly synthesized histones H3 and H4 to replicating DNA; histones H2A/H2B can bind to this chromatin precursor subsequent to DNA replication to complete the histone octamer. The CCR4-NOT complex functions as general transcription regulation complex.,PTM:Differentially phosphorylated during cell cycle. During mitosis the p60 subunit of inactive CAF-1 is hyperphosphorylated and displaced into the cytosol. Progressivly dephosphorylated from G1 to S and G2 phase. Phosphorylated p60 is recruited to chromatin undergoing DNA repair after UV irradiation in G1 , S or G2 phases.,similarity:Belongs to the

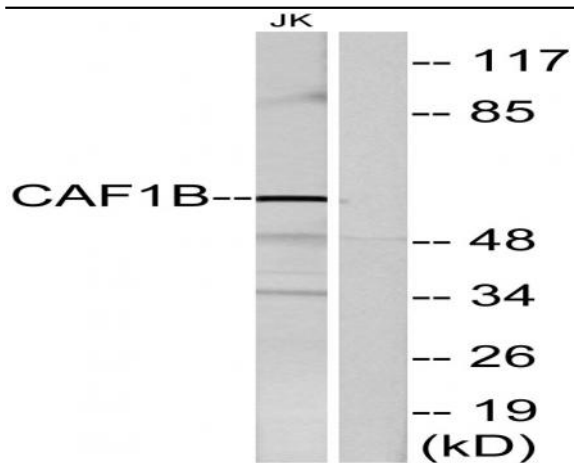
**Subcellular Location :** Nucleus . Cytoplasm . DNA replication foci. Cytoplasmic in M phase.

**Expression :** Epithelium,Lymphoblast,Uterus,

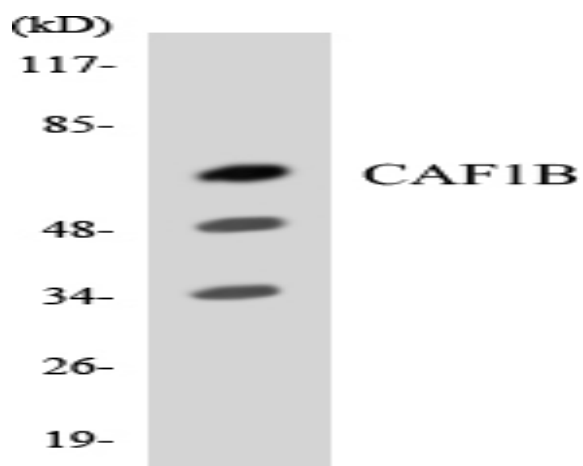
## Products Images



Immunohistochemical analysis of paraffin-embedded Human brain. Antibody was diluted at 1:100(4° overnight). High-pressure and temperature Tris-EDTA,pH8.0 was used for antigen retrieval. Negative contrl (right) obtaned from antibody was pre-absorbed by immunogen peptide.



Western blot analysis of lysates from Jurkat cells, using CAF1B Antibody. The lane on the right is blocked with the synthesized peptide.



Western blot analysis of the lysates from RAW264.7 cells using CAF1B antibody.