

Cadherin-7 Polyclonal Antibody

Catalog No :	YT0602
Reactivity :	Human;Mouse;Rat
Applications :	WB;IHC;IF;ELISA
Target :	Cadherin-7
Gene Name :	CDH7
Protein Name :	Cadherin-7
Human Gene Id :	1005
Human Swiss Prot No :	Q9ULB5
Mouse Gene Id :	241201
Mouse Swiss Prot No :	Q8BM92
Rat Gene Id :	29162
Rat Swiss Prot No :	Q5DWV2
Immunogen :	The antiserum was produced against synthesized peptide derived from human CDH7. AA range:651-700
Specificity :	Cadherin-7 Polyclonal Antibody detects endogenous levels of Cadherin-7 protein.
Formulation :	Liquid in PBS containing 50% glycerol, 0.5% BSA and 0.02% sodium azide.
Source :	Polyclonal, Rabbit,IgG
Dilution :	WB 1:500 - 1:2000. IHC 1:100 - 1:300. IF 1:200 - 1:1000. ELISA: 1:20000. Not yet tested in other applications.
Purification :	The antibody was affinity-purified from rabbit antiserum by affinity-

chromatography using epitope-specific immunogen.

Concentration : 1 mg/ml

Storage Stability : -15°C to -25°C/1 year(Do not lower than -25°C)

Observed Band : 87kD

Cell Pathway : Adherens_Junction

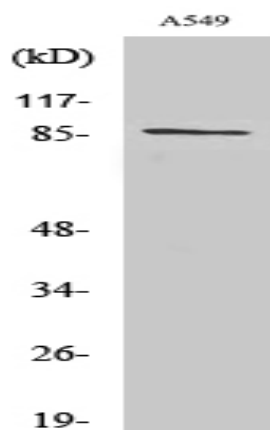
Background : This gene encodes a type II classical cadherin of the cadherin superfamily. Alternative splicing results in multiple transcript variants, at least one of which encodes a preproprotein that is proteolytically processed to generate the mature glycoprotein. This calcium dependent cell-cell adhesion molecule is comprised of five extracellular cadherin repeats, a transmembrane region and a highly conserved cytoplasmic tail. Type II (atypical) cadherins are defined based on their lack of a histidine-alanine-valine (HAV) cell adhesion recognition sequence specific to type I cadherins. Cadherins mediate cell-cell binding in a homophilic manner, contributing to the sorting of heterogeneous cell types. Mutations in this gene may be associated with bipolar disease in human patients. This gene is present in a gene cluster on chromosome 18. [provided by RefSeq, May 2016],

Function : function:Cadherins are calcium dependent cell adhesion proteins. They preferentially interact with themselves in a homophilic manner in connecting cells; cadherins may thus contribute to the sorting of heterogeneous cell types.,similarity:Contains 5 cadherin domains.,

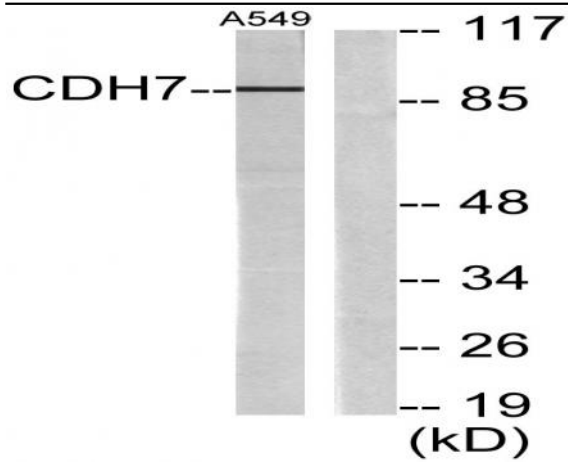
Subcellular Location : Cell membrane; Single-pass type I membrane protein.

Expression : Brain,

Products Images



Western Blot analysis of various cells using Cadherin-7 Polyclonal Antibody diluted at 1:1000



Western blot analysis of lysates from A549 cells, using CDH7 Antibody. The lane on the right is blocked with the synthesized peptide.