

Cadherin-26 Polyclonal Antibody

Catalog No :	YT0601
Reactivity :	Human;Rat;Mouse;
Applications :	WB;IF;ELISA
Target :	Cadherin-26
Gene Name :	CDH26
Protein Name :	Cadherin-like protein 26
Human Gene Id :	60437
Human Swiss Prot No :	Q8IXH8
Mouse Swiss Prot No :	P59862
Immunogen :	The antiserum was produced against synthesized peptide derived from human CDH26. AA range:11-60
Specificity :	Cadherin-26 Polyclonal Antibody detects endogenous levels of Cadherin-26 protein.
Formulation :	Liquid in PBS containing 50% glycerol, 0.5% BSA and 0.02% sodium azide.
Source :	Polyclonal, Rabbit,IgG
Dilution :	WB 1:500 - 1:2000. IF 1:200 - 1:1000. ELISA: 1:10000. Not yet tested in other applications.
Purification :	The antibody was affinity-purified from rabbit antiserum by affinity-chromatography using epitope-specific immunogen.
Concentration :	1 mg/ml
Storage Stability :	-15°C to -25°C/1 year(Do not lower than -25°C)

Observed Band : 95kD

Cell Pathway : Adherens_Junction

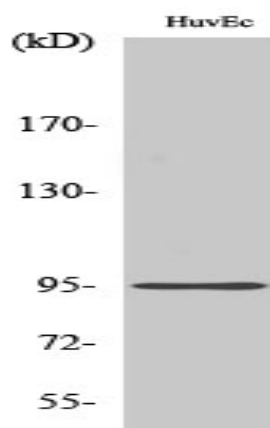
Background : Cadherins are a family of adhesion molecules that mediate Ca²⁺-dependent cell-cell adhesion in all solid tissues and modulate a wide variety of processes, including cell polarization and migration. Cadherin domains occur as repeats in the extracellular region and are thought to contribute to the sorting of heterogeneous cell types and the maintenance of orderly structures such as epithelium. This gene encodes a cadherin domain-containing protein whose specific function has not yet been determined. Alternative splicing occurs at this locus and two transcript variants, encoding distinct proteins, have been identified. [provided by RefSeq, Jul 2008],

Function : function:Cadherins are calcium dependent cell adhesion proteins. They preferentially interact with themselves in a homophilic manner in connecting cells; cadherins may thus contribute to the sorting of heterogeneous cell types.,similarity:Contains 4 cadherin domains.,

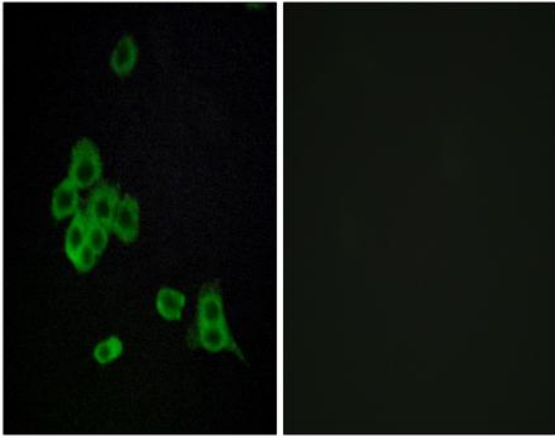
Subcellular Location : Cell membrane ; Single-pass type I membrane protein .

Expression : Expressed by epithelial cells of gastrointestinal tissue.

Products Images



Western Blot analysis of various cells using Cadherin-26 Polyclonal Antibody



Immunofluorescence analysis of MCF7 cells, using CDH26 Antibody. The picture on the right is blocked with the synthesized peptide.