

ARALAR Polyclonal Antibody

| | |
|------------------------------|---|
| Catalog No : | YT0305 |
| Reactivity : | Human;Rat;Mouse; |
| Applications : | WB;IHC;IF;ELISA |
| Target : | ARALAR |
| Gene Name : | SLC25A12 |
| Protein Name : | Calcium-binding mitochondrial carrier protein Aralar1 |
| Human Gene Id : | 8604 |
| Human Swiss Prot No : | O75746 |
| Mouse Swiss Prot No : | Q8BH59 |
| Immunogen : | The antiserum was produced against synthesized peptide derived from human CMC1. AA range:391-440 |
| Specificity : | ARALAR Polyclonal Antibody detects endogenous levels of ARALAR protein. |
| Formulation : | Liquid in PBS containing 50% glycerol, 0.5% BSA and 0.02% sodium azide. |
| Source : | Polyclonal, Rabbit,IgG |
| Dilution : | WB 1:500 - 1:2000. IHC 1:100 - 1:300. ELISA: 1:20000.. IF 1:50-200 |
| Purification : | The antibody was affinity-purified from rabbit antiserum by affinity-chromatography using epitope-specific immunogen. |
| Concentration : | 1 mg/ml |
| Storage Stability : | -15°C to -25°C/1 year(Do not lower than -25°C) |
| Observed Band : | 75kD |

Background :

This gene encodes a calcium-binding mitochondrial carrier protein. The encoded protein localizes to the mitochondria and is involved in the exchange of aspartate for glutamate across the inner mitochondrial membrane. Polymorphisms in this gene may be associated with autism, and mutations in this gene may also be a cause of global cerebral hypomyelination. Alternatively spliced transcript variants have been observed for this gene. [provided by RefSeq, Apr 2012],

Function :

function:Calcium-dependent mitochondrial aspartate and glutamate carrier. May have a function in the urea cycle.,miscellaneous:Binds calcium.,similarity:Belongs to the mitochondrial carrier family.,similarity:Contains 3 Solcar repeats.,similarity:Contains 4 EF-hand domains.,tissue specificity:High levels in heart and skeletal muscle, low in brain and very low in kidney.,

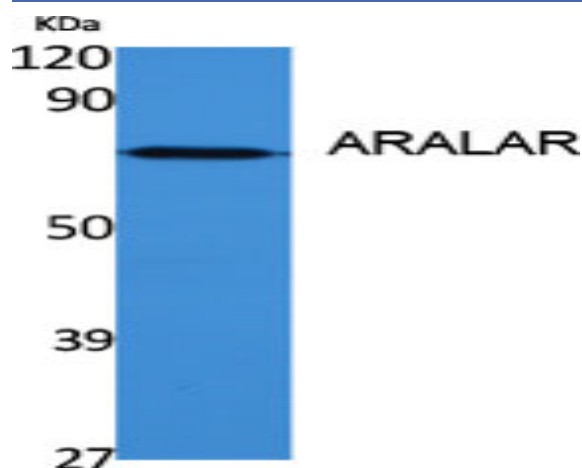
Subcellular Location :

Mitochondrion inner membrane ; Multi-pass membrane protein .

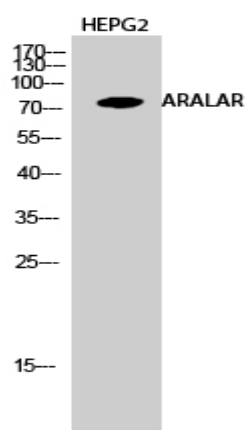
Expression :

Expressed predominantly in the heart and skeletal muscle, weakly in brain and kidney.

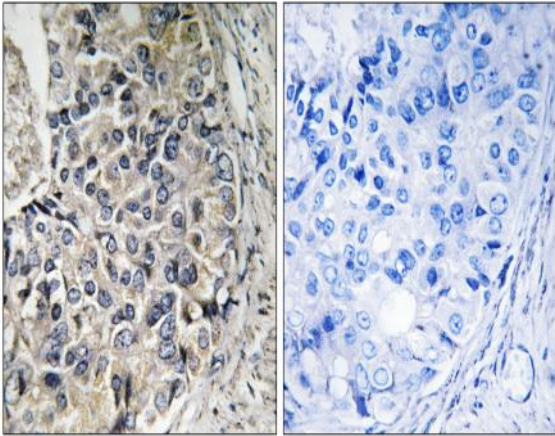
Products Images



Western Blot analysis of various cells using ARALAR Polyclonal Antibody diluted at 1:1000



Western Blot analysis of HEPG2 cells using ARALAR Polyclonal Antibody diluted at 1:1000



Immunohistochemistry analysis of paraffin-embedded human prostate carcinoma tissue, using CMC1 Antibody. The picture on the right is blocked with the synthesized peptide.