

ApoL5 Polyclonal Antibody

Catalog No :	YT0281
Reactivity :	Human
Applications :	IHC;IF;ELISA
Target :	ApoL5
Gene Name :	APOL5
Protein Name :	Apolipoprotein L5
Human Gene Id :	80831
Human Swiss Prot No :	Q9BWW9
Immunogen :	The antiserum was produced against synthesized peptide derived from human APOL5. AA range:384-433
Specificity :	ApoL5 Polyclonal Antibody detects endogenous levels of ApoL5 protein.
Formulation :	Liquid in PBS containing 50% glycerol, 0.5% BSA and 0.02% sodium azide.
Source :	Polyclonal, Rabbit,IgG
Dilution :	IHC 1:100 - 1:300. IF 1:200 - 1:1000. ELISA: 1:40000. Not yet tested in other applications.
Purification :	The antibody was affinity-purified from rabbit antiserum by affinity-chromatography using epitope-specific immunogen.
Concentration :	1 mg/ml
Storage Stability :	-15°C to -25°C/1 year(Do not lower than -25°C)
Molecularweight :	47kD
Background :	This gene is a member of the apolipoprotein L gene family. The encoded protein

is found in the cytoplasm, where it may affect the movement of lipids or allow the binding of lipids to organelles. [provided by RefSeq, Jul 2008],

Function :

function:May affect the movement of lipids in the cytoplasm or allow the binding of lipids to organelles.,similarity:Belongs to the apolipoprotein L family.,tissue specificity:Low level of expression; detected in uterus, testis, skeletal muscle and stomach.,

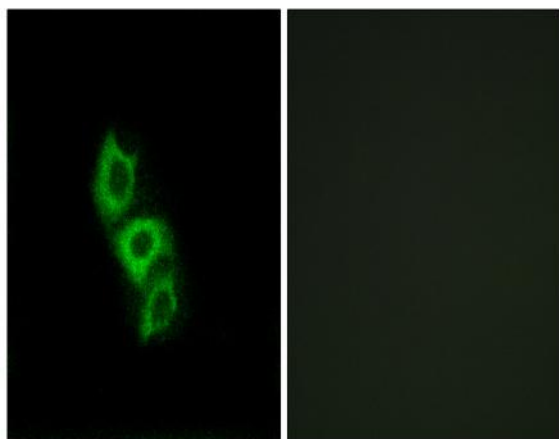
Subcellular Location :

Cytoplasm .

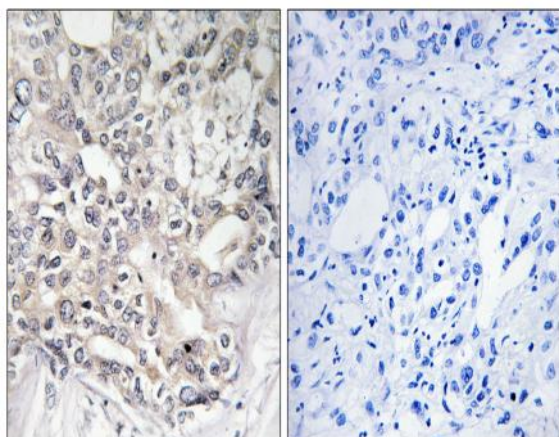
Expression :

Low level of expression; detected in uterus, testis, skeletal muscle and stomach.

Products Images



Immunofluorescence analysis of A549 cells, using APOL5 Antibody. The picture on the right is blocked with the synthesized peptide.



Immunohistochemistry analysis of paraffin-embedded human liver carcinoma tissue, using APOL5 Antibody. The picture on the right is blocked with the synthesized peptide.