

BUD31 Polyclonal Antibody

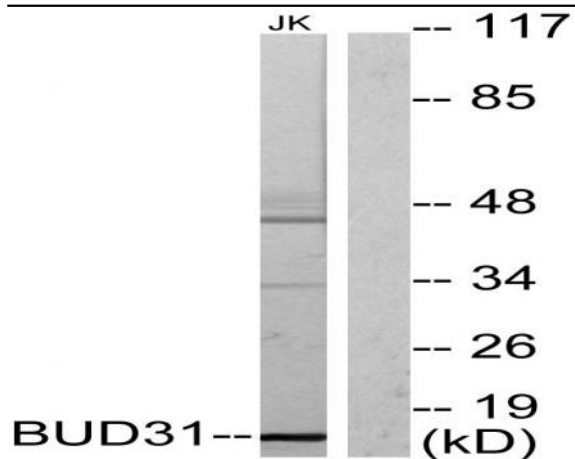
Catalog No :	YT0550
Reactivity :	Human;Mouse;Rat
Applications :	WB;IHC;IF;ELISA
Target :	BUD31
Fields :	>>Spliceosome
Gene Name :	BUD31
Protein Name :	Protein BUD31 homolog
Human Gene Id :	8896
Human Swiss Prot No :	P41223
Mouse Gene Id :	231889
Mouse Swiss Prot No :	Q6PGH1
Rat Gene Id :	89819
Rat Swiss Prot No :	O70454
Immunogen :	The antiserum was produced against synthesized peptide derived from human BUD31. AA range:10-59
Specificity :	BUD31 Polyclonal Antibody detects endogenous levels of BUD31 protein.
Formulation :	Liquid in PBS containing 50% glycerol, 0.5% BSA and 0.02% sodium azide.
Source :	Polyclonal, Rabbit,IgG
Dilution :	WB 1:500 - 1:2000. IHC 1:100 - 1:300. ELISA: 1:20000.. IF 1:50-200

Purification :	The antibody was affinity-purified from rabbit antiserum by affinity-chromatography using epitope-specific immunogen.
Concentration :	1 mg/ml
Storage Stability :	-15°C to -25°C/1 year(Do not lower than -25°C)
Observed Band :	17kD
Cell Pathway :	Spliceosome;
Background :	similarity:Belongs to the BUD31 (G10) family.,
Function :	similarity:Belongs to the BUD31 (G10) family.,
Subcellular Location :	Nucleus . Detected in chromatin at the promoter of AR target genes. .
Expression :	Detected in epithelial and stromal cells in benign prostate hyperplasia tissue (at protein level).

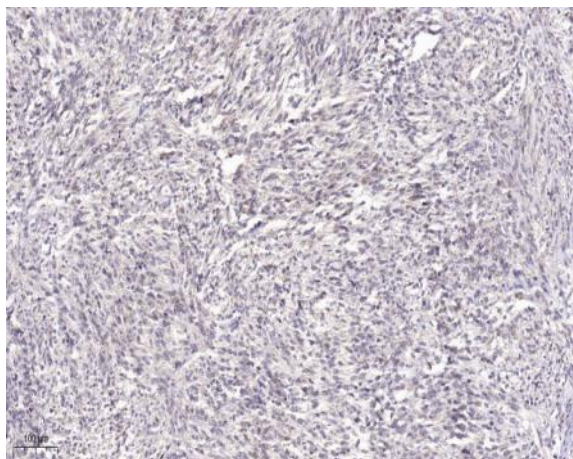
Products Images



Western Blot analysis of various cells using BUD31 Polyclonal Antibody cells nucleus extracted by Minute TM Cytoplasmic and Nuclear Fractionation kit (SC-003, Inventbiotech, MN, USA).



Western blot analysis of lysates from Jurkat cells, using BUD31 Antibody. The lane on the right is blocked with the synthesized peptide.



Immunohistochemical analysis of paraffin-embedded human Small intestinal stromal tumor. 1, Tris-EDTA, pH 9.0 was used for antigen retrieval. 2 Antibody was diluted at 1:200 (4° overnight). 3, Secondary antibody was diluted at 1:200 (room temperature, 45 min).