

Brn-3a Polyclonal Antibody

Catalog No :	YT0529
Reactivity :	Human;Mouse;Rat
Applications :	WB;ELISA
Target :	Brn-3a
Gene Name :	POU4F1
Protein Name :	POU domain class 4 transcription factor 1
Human Gene Id :	5457
Human Swiss Prot No :	Q01851
Mouse Gene Id :	18996
Mouse Swiss Prot No :	P17208
Rat Swiss Prot No :	P20266
Immunogen :	The antiserum was produced against synthesized peptide derived from human POU4F1. AA range:311-360
Specificity :	Brn-3a Polyclonal Antibody detects endogenous levels of Brn-3a protein.
Formulation :	Liquid in PBS containing 50% glycerol, 0.5% BSA and 0.02% sodium azide.
Source :	Polyclonal, Rabbit,IgG
Dilution :	WB 1:500 - 1:2000. ELISA: 1:5000. Not yet tested in other applications.
Purification :	The antibody was affinity-purified from rabbit antiserum by affinity-chromatography using epitope-specific immunogen.
Concentration :	1 mg/ml

Storage Stability : -15°C to -25°C/1 year(Do not lower than -25°C)

Observed Band : 42kD

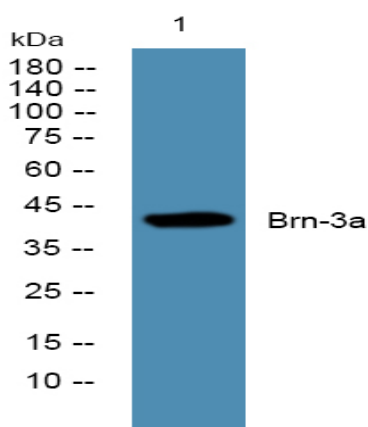
Background : This gene encodes a member of the POU-IV class of neural transcription factors. This protein is expressed in a subset of retinal ganglion cells and may be involved in the developing sensory nervous system. This protein may also promote the growth of cervical tumors. A translocation of this gene is associated with some adult acute myeloid leukemias. [provided by RefSeq, Mar 2012],

Function : developmental stage:Expression peaks early in embryogenesis (day 13.5) and is undetectable 14 days after birth.,function:Probable transcription factor which may play a role in the regulation of specific gene expression within a subset of neuronal lineages. May play a role in determining or maintaining the identities of a small subset of visual system neurons.,similarity:Belongs to the POU transcription factor family. Class-4 subfamily.,similarity:Contains 1 homeobox DNA-binding domain.,similarity:Contains 1 POU-specific domain.,tissue specificity:Brain. Seems to be specific to the retina. Present in the developing brain, spinal cord and eye.,

Subcellular Location : Nucleus . Cytoplasm .

Expression : Expressed in the brain and the retina. Present in the developing brain, spinal cord and eye.

Products Images



Western blot analysis of lysates from SW480 cells, primary antibody was diluted at 1:1000, 4° over night