

Amylin Polyclonal Antibody

Catalog No :	YT0225
Reactivity :	Human;Rat;Mouse;
Applications :	WB;IHC;IF;ELISA
Target :	Amylin
Fields :	>>Neuroactive ligand-receptor interaction;>>Maturity onset diabetes of the young
Gene Name :	IAPP
Protein Name :	Islet amyloid polypeptide
Human Gene Id :	3375
Human Swiss Prot No :	P10997
Mouse Swiss Prot No :	P12968
Immunogen :	The antiserum was produced against synthesized peptide derived from human Amylin. AA range:1-50
Specificity :	Amylin Polyclonal Antibody detects endogenous levels of Amylin protein.
Formulation :	Liquid in PBS containing 50% glycerol, 0.5% BSA and 0.02% sodium azide.
Source :	Polyclonal, Rabbit,IgG
Dilution :	WB 1:500 - 1:2000. IHC 1:100 - 1:300. IF 1:200 - 1:1000. ELISA: 1:10000. Not yet tested in other applications.
Purification :	The antibody was affinity-purified from rabbit antiserum by affinity-chromatography using epitope-specific immunogen.
Concentration :	1 mg/ml

Storage Stability : -15°C to -25°C/1 year(Do not lower than -25°C)

Observed Band : 25kD

Cell Pathway : Maturity onset diabetes of the young;

Background : islet amyloid polypeptide(IAPP) Homo sapiens This gene encodes a member of the calcitonin family of peptide hormones. This hormone is released from pancreatic beta cells following food intake to regulate blood glucose levels and act as a satiation signal. Human patients with type 1 and advanced type 2 diabetes exhibit reduced levels of the encoded hormone in blood and pancreas. This protein also exhibits a bactericidal, antimicrobial activity. [provided by RefSeq, Jul 2016],

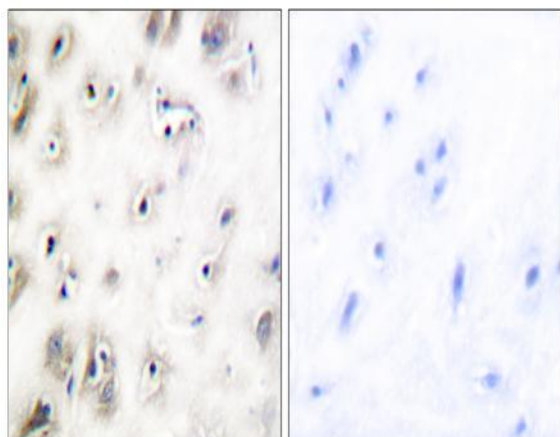
Function : disease:IAPP is the peptide subunit of amyloid found in pancreatic islets of type 2 diabetic patients and in insulinomas.,function:Selectively inhibits insulin-stimulated glucose utilization and glycogen deposition in muscle, while not affecting adipocyte glucose metabolism.,online information:Amylin entry,similarity:Belongs to the calcitonin family.,

Subcellular Location : Secreted .

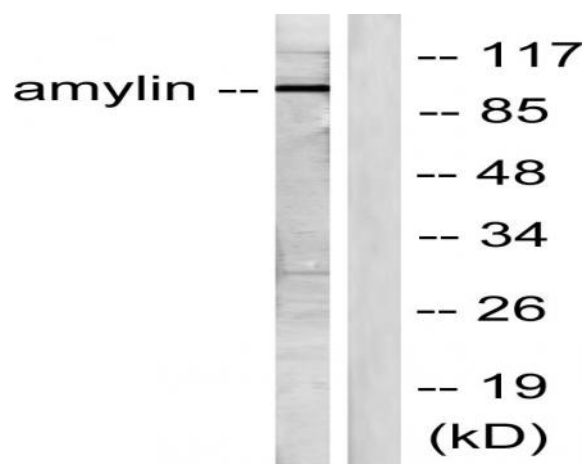
Products Images



Western Blot analysis of various cells using Amylin Polyclonal Antibody diluted at 1:1000



Immunohistochemistry analysis of paraffin-embedded human brain tissue, using Amylin Antibody. The picture on the right is blocked with the synthesized peptide.



Western blot analysis of lysates from HeLa cells, treated with EGF 200ng/ml 30', using Amylin Antibody. The lane on the right is blocked with the synthesized peptide.