

BET5 Polyclonal Antibody

| | |
|------------------------------|---|
| Catalog No : | YT0487 |
| Reactivity : | Human;Mouse;Rat |
| Applications : | IHC;IF;ELISA |
| Target : | BET5 |
| Gene Name : | TRAPPC1 |
| Protein Name : | Trafficking protein particle complex subunit 1 |
| Human Gene Id : | 58485 |
| Human Swiss Prot No : | Q9Y5R8 |
| Mouse Gene Id : | 245828 |
| Mouse Swiss Prot No : | Q5NCF2 |
| Rat Gene Id : | 287427 |
| Rat Swiss Prot No : | Q2KMM2 |
| Immunogen : | The antiserum was produced against synthesized peptide derived from human TRAPPC1. AA range:10-59 |
| Specificity : | BET5 Polyclonal Antibody detects endogenous levels of BET5 protein. |
| Formulation : | Liquid in PBS containing 50% glycerol, 0.5% BSA and 0.02% sodium azide. |
| Source : | Polyclonal, Rabbit,IgG |
| Dilution : | IHC 1:100 - 1:300. ELISA: 1:5000.. IF 1:50-200 |
| Purification : | The antibody was affinity-purified from rabbit antiserum by affinity-chromatography using epitope-specific immunogen. |

Concentration : 1 mg/ml

Storage Stability : -15°C to -25°C/1 year(Do not lower than -25°C)

Molecularweight : 17kD

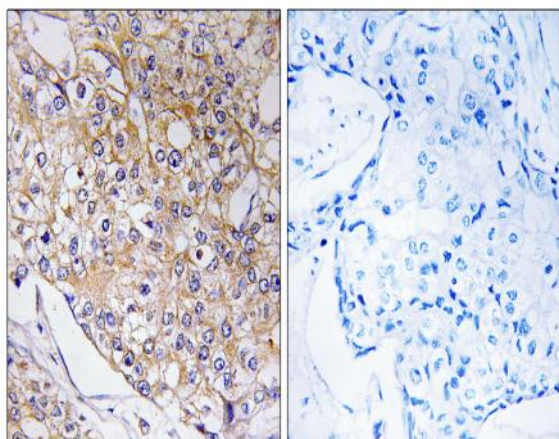
Background : trafficking protein particle complex 1 (TRAPPC1) Homo sapiens This gene product plays a role in vesicular transport of proteins to the Golgi apparatus from the endoplasmic reticulum. The encoded protein is a component of the multisubunit transport protein particle (TRAPP) complex. Alternative splicing results in multiple transcript variants.[provided by RefSeq, Oct 2009],

Function : function:May play a role in vesicular transport from endoplasmic reticulum to Golgi.,similarity:Belongs to the TRAPP small subunits family. BET5 subfamily.,subunit:Part of the multisubunit TRAPP (transport protein particle) complex.,

Subcellular Location : Golgi apparatus, cis-Golgi network . Endoplasmic reticulum .

Expression : Uterus,

Products Images



Immunohistochemistry analysis of paraffin-embedded human breast carcinoma tissue, using TRAPPC1 Antibody. The picture on the right is blocked with the synthesized peptide.