

BCSC-1 Polyclonal Antibody

Catalog No :	YT0483
Reactivity :	Human;Rat;Mouse;
Applications :	WB;ELISA
Target :	BCSC-1
Gene Name :	VWA5A
Protein Name :	von Willebrand factor A domain-containing protein 5A
Human Gene Id :	4013
Human Swiss Prot No :	O00534
Mouse Swiss Prot No :	Q99KC8
Immunogen :	The antiserum was produced against synthesized peptide derived from human LHR2A. AA range:371-420
Specificity :	BCSC-1 Polyclonal Antibody detects endogenous levels of BCSC-1 protein.
Formulation :	Liquid in PBS containing 50% glycerol, 0.5% BSA and 0.02% sodium azide.
Source :	Polyclonal, Rabbit,IgG
Dilution :	WB 1:500 - 1:2000. ELISA: 1:20000. Not yet tested in other applications.
Purification :	The antibody was affinity-purified from rabbit antiserum by affinity-chromatography using epitope-specific immunogen.
Concentration :	1 mg/ml
Storage Stability :	-15°C to -25°C/1 year(Do not lower than -25°C)
Observed Band :	86kD

Background :

VWA5A (von Willebrand factor A domain containing 5A), also known as BCSC-1 (breast cancer suppressor candidate 1) or LOH11CR2A (loss of heterozygosity 11 chromosomal region 2 gene A protein), is a 786 amino acid protein containing one VIT domain and one VWFA domain. VWA5A is expressed at low levels in various tissues, with no expression found in 80% of tumor cell lines. Likely acting as a tumor suppressor gene, deletion of VWA5A leads to loss of heterozygosity (LOH) in breast and ovarian tumors, and may have an important role as a potential gene therapy target. Abnormal expression of VWA5A may lead to an increase in adhesion of CNE-2L2 cells associated with an increase in expression of E-cadherin, alpha-catenin, and p53, resulting in a decrease of malignant activity in cells with ectopic expression of VWA5A. Existing as four alternatively spliced isoforms, the gene encoding VWA5A maps to human chromosome 11q24.2.

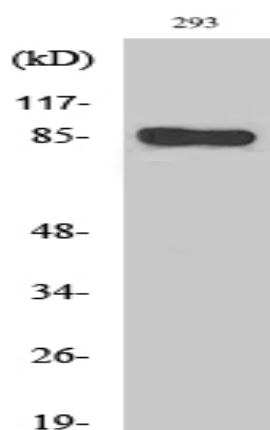
Subcellular Location :

nucleus,nucleoplasm,

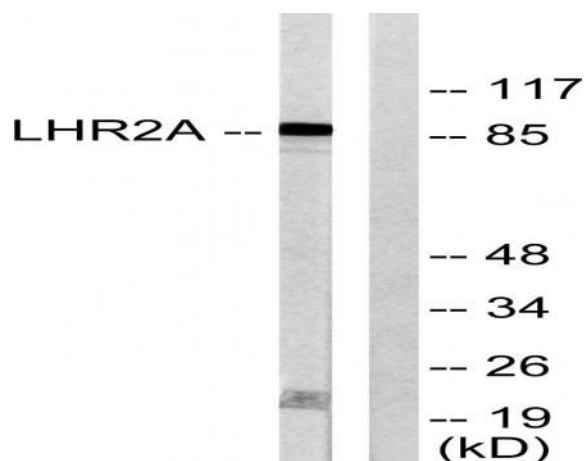
Expression :

Expressed at low level in many tissues. Not expressed in 80% of tumor cell lines tested.

Products Images



Western Blot analysis of various cells using BCSC-1 Polyclonal Antibody



Western blot analysis of lysates from 293 cells, using LHR2A Antibody. The lane on the right is blocked with the synthesized peptide.