

CARD 14 Polyclonal Antibody

Catalog No :	YT0636
Reactivity :	Human;Mouse
Applications :	IHC;IF;ELISA
Target :	CARD 14
Fields :	>>NF-kappa B signaling pathway
Gene Name :	CARD14
Protein Name :	Caspase recruitment domain-containing protein 14
Human Gene Id :	79092
Human Swiss Prot No :	Q9BXL6
Mouse Gene Id :	170720
Mouse Swiss Prot No :	Q99KF0
Immunogen :	The antiserum was produced against synthesized peptide derived from human CAR14. AA range:291-340
Specificity :	CARD 14 Polyclonal Antibody detects endogenous levels of CARD 14 protein.
Formulation :	Liquid in PBS containing 50% glycerol, 0.5% BSA and 0.02% sodium azide.
Source :	Polyclonal, Rabbit,IgG
Dilution :	IHC 1:100 - 1:300. IF 1:200 - 1:1000. ELISA: 1:40000. Not yet tested in other applications.
Purification :	The antibody was affinity-purified from rabbit antiserum by affinity-chromatography using epitope-specific immunogen.
Concentration :	1 mg/ml

Storage Stability : -15°C to -25°C/1 year (Do not lower than -25°C)

Observed Band : 110kD

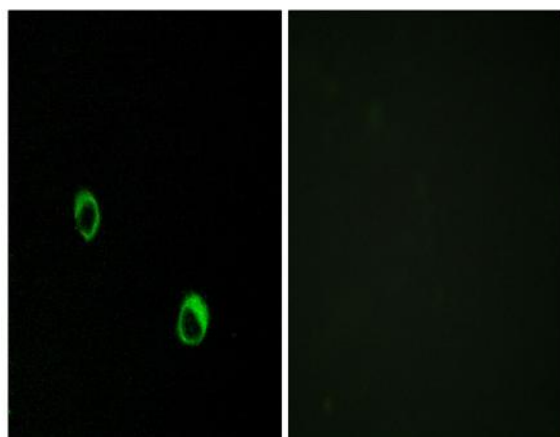
Background : This gene encodes a caspase recruitment domain-containing protein that is a member of the membrane-associated guanylate kinase (MAGUK) family of proteins. Members of this protein family are scaffold proteins that are involved in a diverse array of cellular processes including cellular adhesion, signal transduction and cell polarity control. This protein has been shown to specifically interact with BCL10, a protein known to function as a positive regulator of cell apoptosis and NF-kappaB activation. Alternate splicing results in multiple transcript variants. [provided by RefSeq, Apr 2012],

Function : caution: Supposed to contain a SH3 domain which is not detected by PROSITE, Pfam or SMART., function: Activates NF-kappa-B via BCL10 and IKK. Stimulates the phosphorylation of BCL10., similarity: Contains 1 CARD domain., similarity: Contains 1 guanylate kinase-like domain., similarity: Contains 1 PDZ (DHR) domain., subunit: CARD14 and BCL10 bind to each other by CARD-CARD interaction., tissue specificity: Expressed in placenta. Also detected in HeLa S3 cells, but not in the other cancer cell lines tested.,

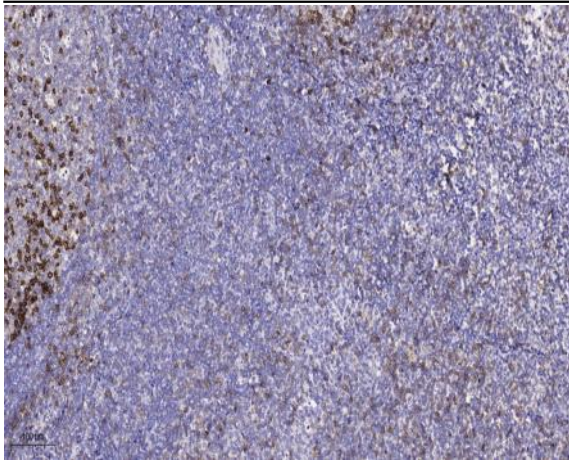
Subcellular Location : [Isoform 1]: Cytoplasm .; [Isoform 2]: Cytoplasm .; [Isoform 3]: Cytoplasm .

Expression : Isoform 1 is detected in placenta and epidermal keratinocytes (PubMed:22521418). Isoform 2 is detected in leukocytes and fetal brain (PubMed:22521418).

Products Images



Immunofluorescence analysis of MCF7 cells, using CAR14 Antibody. The picture on the right is blocked with the synthesized peptide.



Immunohistochemical analysis of paraffin-embedded human tonsil. 1, Antibody was diluted at 1:200(4 ° overnight). 2, Tris-EDTA,pH9.0 was used for antigen retrieval. 3,Secondary antibody was diluted at 1:200(room temperature, 45min).