

## AGR3 Polyclonal Antibody

<b>Catalog No :</b>	YT0142
<b>Reactivity :</b>	Human;Mouse
<b>Applications :</b>	IHC;IF;ELISA
<b>Target :</b>	AGR3
<b>Gene Name :</b>	AGR3
<b>Protein Name :</b>	Anterior gradient protein 3 homolog
<b>Human Gene Id :</b>	155465
<b>Human Swiss Prot No :</b>	Q8TD06
<b>Mouse Gene Id :</b>	403205
<b>Mouse Swiss Prot No :</b>	Q8R3W7
<b>Immunogen :</b>	The antiserum was produced against synthesized peptide derived from human AGR3. AA range:1-50
<b>Specificity :</b>	AGR3 Polyclonal Antibody detects endogenous levels of AGR3 protein.
<b>Formulation :</b>	Liquid in PBS containing 50% glycerol, 0.5% BSA and 0.02% sodium azide.
<b>Source :</b>	Polyclonal, Rabbit,IgG
<b>Dilution :</b>	IHC 1:100 - 1:300. IF 1:200 - 1:1000. ELISA: 1:5000. Not yet tested in other applications.
<b>Purification :</b>	The antibody was affinity-purified from rabbit antiserum by affinity-chromatography using epitope-specific immunogen.
<b>Concentration :</b>	1 mg/ml
<b>Storage Stability :</b>	-15°C to -25°C/1 year(Do not lower than -25°C)

---

**Molecularweight :** 19kD

---

**Background :** similarity:Belongs to the AGR family.,subunit:Interacts with LYPD3 and alpha-dystroglycan.,

---

**Function :** similarity:Belongs to the AGR family.,subunit:Interacts with LYPD3 and alpha-dystroglycan.,

---

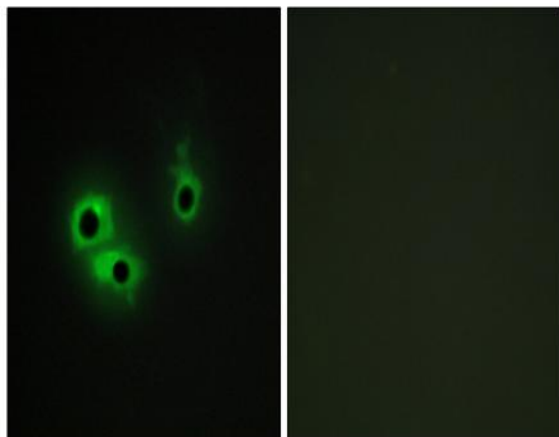
**Subcellular Location :** Endoplasmic reticulum . Found in the cytoplasm, which could include the endoplasmic reticulum. .

---

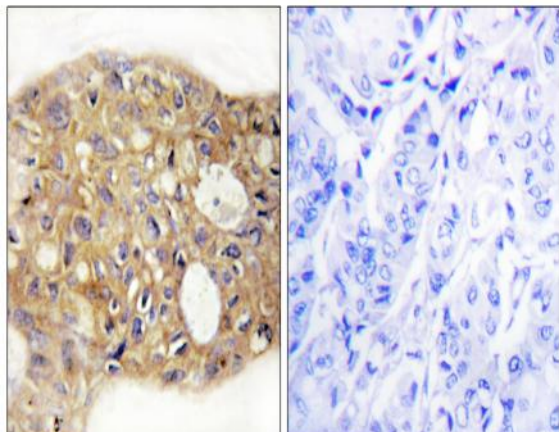
**Expression :** Expressed in the lung, in the ciliated cells of the airway epithelium (PubMed:25751668). Expression increased with differentiation of airway epithelial cells (PubMed:25751668). Not detected in the mucous cells (PubMed:25751668). Expressed in ciliated cells in the oviduct (PubMed:26170690). Also detected in stomach, colon, prostate and liver (PubMed:25751668). Expressed in breast, ovary, prostate and liver cancer (PubMed:26170690). Expression is associated with the level of differentiation of breast cancer (at protein level) (PubMed:26170690).

---

## Products Images



Immunofluorescence analysis of COS7 cells, using AGR3 Antibody. The picture on the right is blocked with the synthesized peptide.



Immunohistochemistry analysis of paraffin-embedded human breast carcinoma tissue, using AGR3 Antibody. The picture on the right is blocked with the synthesized peptide.