

**BACH1 Polyclonal Antibody**

<b>Catalog No :</b>	YT0431
<b>Reactivity :</b>	Human;Rat;Mouse;
<b>Applications :</b>	WB;IHC;IF;ELISA
<b>Target :</b>	BACH1
<b>Gene Name :</b>	BACH1
<b>Protein Name :</b>	Transcription regulator protein BACH1
<b>Human Gene Id :</b>	571
<b>Human Swiss Prot No :</b>	O14867
<b>Mouse Swiss Prot No :</b>	P97302
<b>Immunogen :</b>	The antiserum was produced against synthesized peptide derived from human BACH1. AA range:131-180
<b>Specificity :</b>	BACH1 Polyclonal Antibody detects endogenous levels of BACH1 protein.
<b>Formulation :</b>	Liquid in PBS containing 50% glycerol, 0.5% BSA and 0.02% sodium azide.
<b>Source :</b>	Polyclonal, Rabbit,IgG
<b>Dilution :</b>	WB 1:500 - 1:2000. IHC 1:100 - 1:300. IF 1:200 - 1:1000. ELISA: 1:20000. Not yet tested in other applications.
<b>Purification :</b>	The antibody was affinity-purified from rabbit antiserum by affinity-chromatography using epitope-specific immunogen.
<b>Concentration :</b>	1 mg/ml
<b>Storage Stability :</b>	-15°C to -25°C/1 year(Do not lower than -25°C)
<b>Observed Band :</b>	100kD

**Background :**

This gene encodes a transcription factor that belongs to the cap'n collar type of basic region leucine zipper factor family (CNC-bZip). The encoded protein contains broad complex, tramtrack, bric-a-brac/poxvirus and zinc finger (BTB/POZ) domains, which is atypical of CNC-bZip family members. These BTB/POZ domains facilitate protein-protein interactions and formation of homo- and/or hetero-oligomers. When this encoded protein forms a heterodimer with MafK, it functions as a repressor of Maf recognition element (MARE) and transcription is repressed. Multiple alternatively spliced transcript variants have been identified for this gene. [provided by RefSeq, May 2009],

**Function :**

function:Transcriptional regulator that acts as repressor or activator. Binds, in-vitro, to NF-E2 binding sites. Play important roles in coordinating transcription activation and repression by MAFK.,similarity:Belongs to the bZIP family.,similarity:Belongs to the bZIP family. CNC subfamily.,similarity:Contains 1 BTB (POZ) domain.,similarity:Contains 1 bZIP domain.,

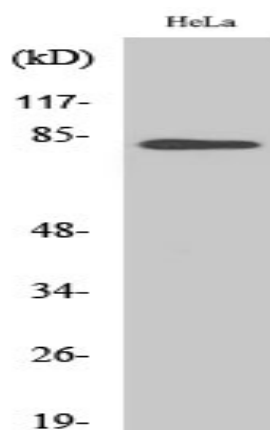
**Subcellular Location :**

Nucleus .

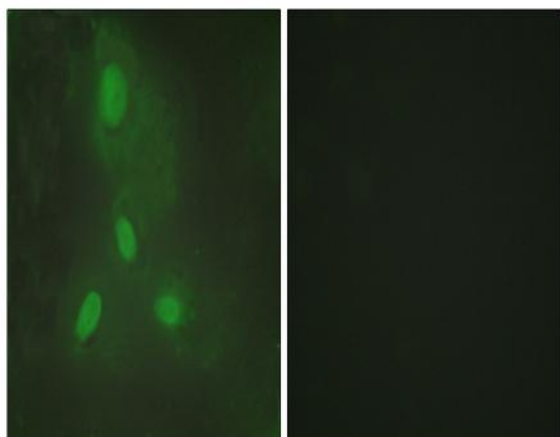
**Expression :**

Epithelium,Placenta,Trachea,

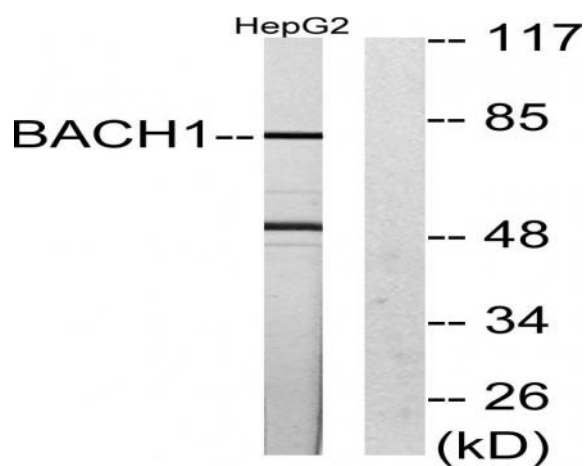
## Products Images



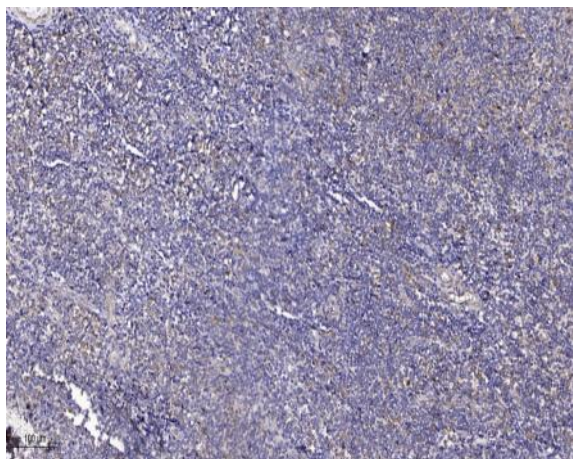
Western Blot analysis of various cells using BACH1 Polyclonal Antibody



Immunofluorescence analysis of HeLa cells, using BACH1 Antibody. The picture on the right is blocked with the synthesized peptide.



Western blot analysis of lysates from HepG2 cells, using BACH1 Antibody. The lane on the right is blocked with the synthesized peptide.



Immunohistochemical analysis of paraffin-embedded human tonsil. 1, Antibody was diluted at 1:200(4° overnight). 2, Tris-EDTA,pH9.0 was used for antigen retrieval. 3,Secondary antibody was diluted at 1:200(room temperature, 45min).