

ADAMTS-17 Polyclonal Antibody

Catalog No :	YT0115
Reactivity :	Human;Mouse
Applications :	IHC;IF;ELISA
Target :	ADAMTS-17
Gene Name :	ADAMTS17
Protein Name :	A disintegrin and metalloproteinase with thrombospondin motifs 17
Human Gene Id :	170691
Human Swiss Prot No :	Q8TE56
Immunogen :	Synthesized peptide derived from ADAMTS-17 . at AA range: 150-230
Specificity :	ADAMTS-17 Polyclonal Antibody detects endogenous levels of ADAMTS-17 protein.
Formulation :	Liquid in PBS containing 50% glycerol, 0.5% BSA and 0.02% sodium azide.
Source :	Polyclonal, Rabbit,IgG
Dilution :	IHC 1:100 - 1:300. ELISA: 1:20000.. IF 1:50-200
Purification :	The antibody was affinity-purified from rabbit antiserum by affinity-chromatography using epitope-specific immunogen.
Concentration :	1 mg/ml
Storage Stability :	-15°C to -25°C/1 year(Do not lower than -25°C)
Molecularweight :	121kD
Background :	This gene encodes a member of the ADAMTS (a disintegrin and metalloproteinase with thrombospondin motifs) protein family. ADAMTS family

members share several distinct protein modules, including a propeptide region, a metalloproteinase domain, a disintegrin-like domain, and a thrombospondin type 1 (TS) motif. Individual members of this family differ in the number of C-terminal TS motifs, and some have unique C-terminal domains. The encoded preproprotein is proteolytically processed to generate the mature protein, which may promote breast cancer cell growth and survival. Mutations in this gene are associated with a Weill-Marchesani-like syndrome, which is characterized by lenticular myopia, ectopia lentis, glaucoma, spherophakia, and short stature. [provided by RefSeq, May 2016],

Function :

domain:The conserved cysteine present in the cysteine-switch motif binds the catalytic zinc ion, thus inhibiting the enzyme. The dissociation of the cysteine from the zinc ion upon the activation-peptide release activates the enzyme.,PTM:The precursor is cleaved by a furin endopeptidase.,similarity:Contains 1 disintegrin domain.,similarity:Contains 1 peptidase M12B domain.,similarity:Contains 1 PLAC domain.,similarity:Contains 5 TSP type-1 domains.,tissue specificity:Expressed in fetal lung, in adult brain, prostate, and liver.,

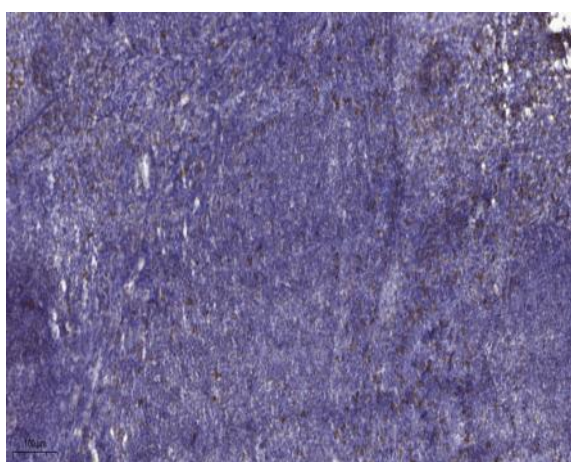
Subcellular Location :

Secreted, extracellular space, extracellular matrix .

Expression :

Isoform 1 and isoform 2 are expressed at high levels in the lung, brain, whole eye and retina. Isoform 1 shows a weaker expression in the heart, kidney and skeletal muscle. Isoform 2 shows a weaker expression in the kidney, bone marrow and skeletal muscle. Isoform 1 and isoform 2 are expressed at high levels in the fetal heart, kidney, and whole eye, whereas a weak expression is seen in the fetal liver.

Products Images



Immunohistochemical analysis of paraffin-embedded human tonsil. 1, Antibody was diluted at 1:200(4° overnight). 2, Tris-EDTA,pH9.0 was used for antigen retrieval. 3,Secondary antibody was diluted at 1:200(room temperature, 30min).