

ABHD14B Polyclonal Antibody

| | |
|------------------------------|---|
| Catalog No : | YT0058 |
| Reactivity : | Human;Rat |
| Applications : | IHC;IF;ELISA |
| Target : | ABHD14B |
| Gene Name : | ABHD14B |
| Protein Name : | Abhydrolase domain-containing protein 14B |
| Human Gene Id : | 84836 |
| Human Swiss Prot No : | Q96IU4 |
| Mouse Swiss Prot No : | Q8VCR7 |
| Rat Gene Id : | 300983 |
| Rat Swiss Prot No : | Q6DGG1 |
| Immunogen : | The antiserum was produced against synthesized peptide derived from human ABHD14B. AA range:161-210 |
| Specificity : | ABHD14B Polyclonal Antibody detects endogenous levels of ABHD14B protein. |
| Formulation : | Liquid in PBS containing 50% glycerol, 0.5% BSA and 0.02% sodium azide. |
| Source : | Polyclonal, Rabbit,IgG |
| Dilution : | IHC 1:100 - 1:300. ELISA: 1:40000.. IF 1:50-200 |
| Purification : | The antibody was affinity-purified from rabbit antiserum by affinity-chromatography using epitope-specific immunogen. |
| Concentration : | 1 mg/ml |

Storage Stability : -15°C to -25°C/1 year(Do not lower than -25°C)

Molecularweight : 22kD

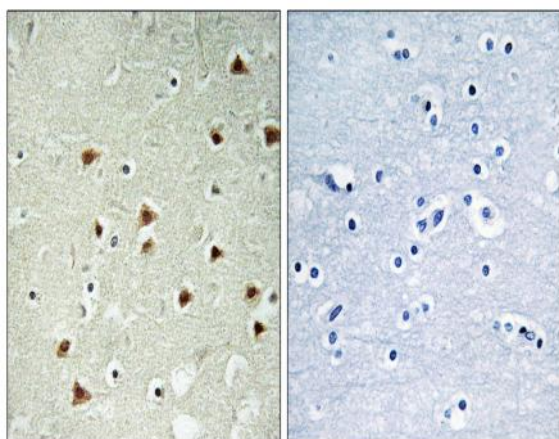
Background : function:Has hydrolase activity towards p-nitrophenyl butyrate (in vitro). May activate transcription.,similarity:Belongs to the AB hydrolase superfamily. ABHD14 family.,subcellular location:Predominantly cytoplasmic.,subunit:May interact with TAF1.,tissue specificity:Ubiquitous. Detected in spleen, thymus, prostate, testis, ovary, small intestine, colon, peripheral blood leukocyte, heart, placenta, lung, liver, skeletal muscle, pancreas and kidney.,

Function : function:Has hydrolase activity towards p-nitrophenyl butyrate (in vitro). May activate transcription.,similarity:Belongs to the AB hydrolase superfamily. ABHD14 family.,subcellular location:Predominantly cytoplasmic.,subunit:May interact with TAF1.,tissue specificity:Ubiquitous. Detected in spleen, thymus, prostate, testis, ovary, small intestine, colon, peripheral blood leukocyte, heart, placenta, lung, liver, skeletal muscle, pancreas and kidney.,

Subcellular Location : Cytoplasm . Nucleus . Predominantly cytoplasmic. .

Expression : Ubiquitous (PubMed:14672934). Detected in spleen, thymus, prostate, testis, ovary, small intestine, colon, peripheral blood leukocyte, heart, placenta, lung, liver, skeletal muscle, pancreas and kidney (PubMed:14672934).

Products Images



Immunohistochemistry analysis of paraffin-embedded human brain tissue, using ABHD14B Antibody. The picture on the right is blocked with the synthesized peptide.