

ABHD12 Polyclonal Antibody

Catalog No :	YT0055
Reactivity :	Human;Mouse;Rat
Applications :	WB;IHC;IF;ELISA
Target :	ABHD12
Gene Name :	ABHD12
Protein Name :	Monoacylglycerol lipase ABHD12
Human Gene Id :	26090
Human Swiss Prot No :	Q8N2K0
Mouse Gene Id :	76192
Mouse Swiss Prot No :	Q99LR1
Rat Gene Id :	499913
Rat Swiss Prot No :	Q6AYT7
Immunogen :	The antiserum was produced against synthesized peptide derived from human ABHD12. AA range:231-280
Specificity :	ABHD12 Polyclonal Antibody detects endogenous levels of ABHD12 protein.
Formulation :	Liquid in PBS containing 50% glycerol, 0.5% BSA and 0.02% sodium azide.
Source :	Polyclonal, Rabbit,IgG
Dilution :	WB 1:500 - 1:2000. IHC 1:100 - 1:300. ELISA: 1:40000.. IF 1:50-200
Purification :	The antibody was affinity-purified from rabbit antiserum by affinity-chromatography using epitope-specific immunogen.

Concentration : 1 mg/ml

Storage Stability : -15°C to -25°C/1 year(Do not lower than -25°C)

Observed Band : 45kD

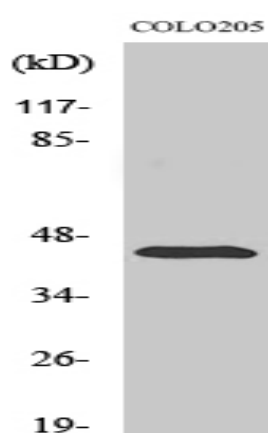
Background : This gene encodes an enzyme that catalyzes the hydrolysis of 2-arachidonoyl glycerol (2-AG), the main endocannabinoid lipid transmitter that acts on cannabinoid receptors, CB1 and CB2. The endocannabinoid system is involved in a wide range of physiological processes, including neurotransmission, mood, appetite, pain appreciation, addiction behavior, and inflammation. Mutations in this gene are associated with the neurodegenerative disease, PHARC (polyneuropathy, hearing loss, ataxia, retinitis pigmentosa, and cataract), resulting from an inborn error of endocannabinoid metabolism. Alternatively spliced transcript variants encoding different isoforms have been noted for this gene.[provided by RefSeq, Jan 2011],

Function : catalytic activity:Hydrolyzes glycerol monoesters of long-chain fatty acids.,function:Has 2-arachidonoylglycerol hydrolase activity (By similarity). May be a regulator of endocannabinoid signaling pathways.,PTM:Glycosylated.,similarity:Belongs to the serine esterase family.,

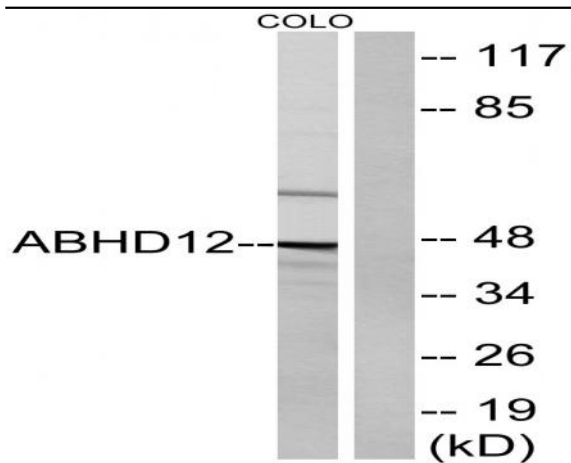
Subcellular Location : Endoplasmic reticulum membrane ; Single-pass membrane protein .

Expression : Cerebellum,Kidney,Ovarian carcinoma,Pancreas,Testis,

Products Images



Western Blot analysis of various cells using ABHD12 Polyclonal Antibody



Western blot analysis of lysates from COLO cells, using ABHD12 Antibody. The lane on the right is blocked with the synthesized peptide.