

**ARHGEF19 Polyclonal Antibody**

<b>Catalog No :</b>	YT0323
<b>Reactivity :</b>	Human;Rat;Mouse;
<b>Applications :</b>	WB;IHC;IF;ELISA
<b>Target :</b>	ARHGEF19
<b>Gene Name :</b>	ARHGEF19
<b>Protein Name :</b>	Rho guanine nucleotide exchange factor 19
<b>Human Gene Id :</b>	128272
<b>Human Swiss Prot No :</b>	Q8IW93
<b>Mouse Swiss Prot No :</b>	Q8BWA8
<b>Immunogen :</b>	The antiserum was produced against synthesized peptide derived from human ARHGEF19. AA range:251-300
<b>Specificity :</b>	ARHGEF19 Polyclonal Antibody detects endogenous levels of ARHGEF19 protein.
<b>Formulation :</b>	Liquid in PBS containing 50% glycerol, 0.5% BSA and 0.02% sodium azide.
<b>Source :</b>	Polyclonal, Rabbit,IgG
<b>Dilution :</b>	WB 1:500 - 1:2000. IHC 1:100 - 1:300. ELISA: 1:20000.. IF 1:50-200
<b>Purification :</b>	The antibody was affinity-purified from rabbit antiserum by affinity-chromatography using epitope-specific immunogen.
<b>Concentration :</b>	1 mg/ml
<b>Storage Stability :</b>	-15°C to -25°C/1 year(Do not lower than -25°C)
<b>Observed Band :</b>	90kD

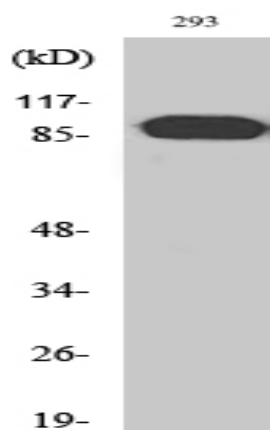
**Cell Pathway :** Regulation of Actin Dynamics; AMPK

**Background :** Guanine nucleotide exchange factors (GEFs) such as ARHGEF19 accelerate the GTPase activity of Rho GTPases (see RHOA, MIM 165390).[supplied by OMIM, Dec 2008],

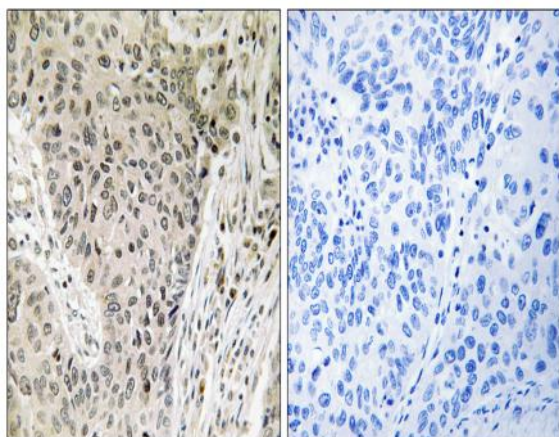
**Function :** function:Acts as guanine nucleotide exchange factor (GEF) for RhoA GTPase.,similarity:Contains 1 DH (DBL-homology) domain.,similarity:Contains 1 PH domain.,similarity:Contains 1 SH3 domain.,

**Expression :** Colon,Pancreas,Tongue,

## Products Images



Western Blot analysis of various cells using ARHGEF19 Polyclonal Antibody



Immunohistochemistry analysis of paraffin-embedded human lung carcinoma, using ARHGEF19 Antibody. The picture on the right is blocked with the synthesized peptide.