

**ARHGAP18 Polyclonal Antibody**

<b>Catalog No :</b>	YT0317
<b>Reactivity :</b>	Human;Rat;Mouse;
<b>Applications :</b>	WB;IHC;IF;ELISA
<b>Target :</b>	ARHGAP18
<b>Gene Name :</b>	ARHGAP18
<b>Protein Name :</b>	Rho GTPase-activating protein 18
<b>Human Gene Id :</b>	93663
<b>Human Swiss Prot No :</b>	Q8N392
<b>Mouse Swiss Prot No :</b>	Q8K0Q5
<b>Immunogen :</b>	The antiserum was produced against synthesized peptide derived from human RHG18. AA range:517-566
<b>Specificity :</b>	ARHGAP18 Polyclonal Antibody detects endogenous levels of ARHGAP18 protein.
<b>Formulation :</b>	Liquid in PBS containing 50% glycerol, 0.5% BSA and 0.02% sodium azide.
<b>Source :</b>	Polyclonal, Rabbit,IgG
<b>Dilution :</b>	WB 1:500 - 1:2000. IHC 1:100 - 1:300. ELISA: 1:40000.. IF 1:50-200
<b>Purification :</b>	The antibody was affinity-purified from rabbit antiserum by affinity-chromatography using epitope-specific immunogen.
<b>Concentration :</b>	1 mg/ml
<b>Storage Stability :</b>	-15°C to -25°C/1 year(Do not lower than -25°C)
<b>Observed Band :</b>	75kD

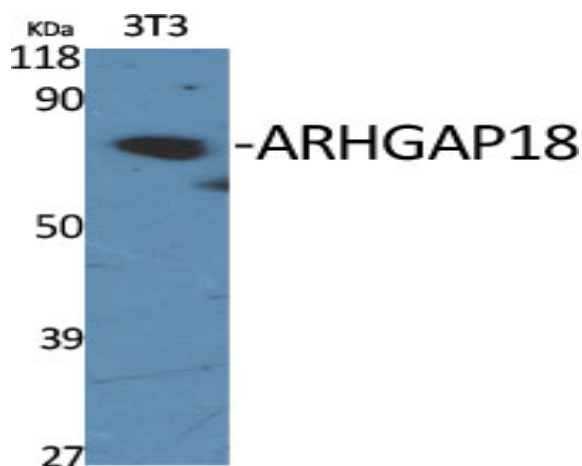
**Background :** ARHGAP18 belongs to a family of Rho (see MIM 165390) GTPase-activating proteins that modulate cell signaling (Potkin et al., 2009 [PubMed 19065146]).[supplied by OMIM, Apr 2010],

**Function :** function:GTPase activator for the Rho-type GTPases by converting them to an inactive GDP-bound state.,sequence caution:Contaminating sequence. Potential poly-A sequence.,similarity:Contains 1 Rho-GAP domain.,subunit:Interacts with MPHOSPH6.,

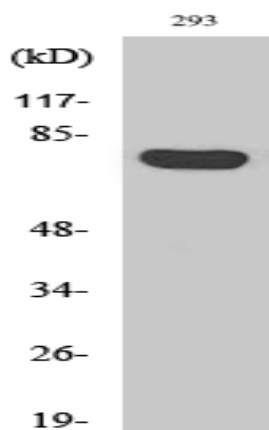
**Subcellular Location :** Cytoplasm .

**Expression :** Brain,Mast cell,Melanoma,Uterus,

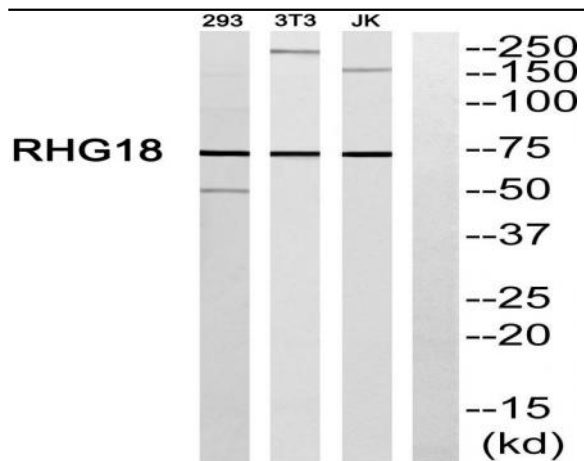
## Products Images



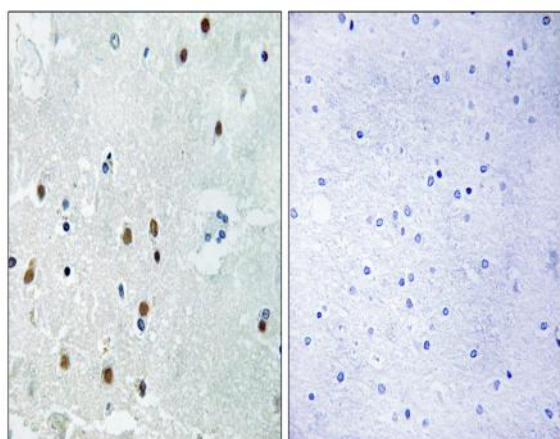
Western Blot analysis of various cells using ARHGAP18 Polyclonal Antibody



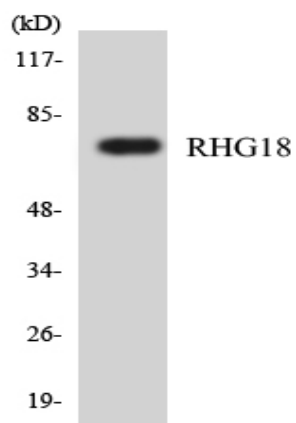
Western Blot analysis of Jurkat cells using ARHGAP18 Polyclonal Antibody



Western blot analysis of RHG18 Antibody. The lane on the right is blocked with the RHG18 peptide.



Immunohistochemistry analysis of paraffin-embedded human brain, using RHG18 Antibody. The lane on the right is blocked with the RHG18 peptide.



Western blot analysis of the lysates from HepG2 cells using RHG18 antibody.