

ApoER2 Polyclonal Antibody

Catalog No :	YT0275
Reactivity :	Human;Rat;Mouse;
Applications :	WB;ELISA
Target :	ApoER2
Gene Name :	LRP8
Protein Name :	Low-density lipoprotein receptor-related protein 8
Human Gene Id :	55911
Human Swiss Prot No :	Q14114
Mouse Swiss Prot No :	Q924X6
Immunogen :	The antiserum was produced against synthesized peptide derived from human LRP8. AA range:451-500
Specificity :	ApoER2 Polyclonal Antibody detects endogenous levels of ApoER2 protein.
Formulation :	Liquid in PBS containing 50% glycerol, 0.5% BSA and 0.02% sodium azide.
Source :	Polyclonal, Rabbit,IgG
Dilution :	WB 1:500 - 1:2000. ELISA: 1:40000. Not yet tested in other applications.
Purification :	The antibody was affinity-purified from rabbit antiserum by affinity-chromatography using epitope-specific immunogen.
Concentration :	1 mg/ml
Storage Stability :	-15°C to -25°C/1 year(Do not lower than -25°C)
Observed Band :	100kD

Background :

This gene encodes a member of the low density lipoprotein receptor (LDLR) family. Low density lipoprotein receptors are cell surface proteins that play roles in both signal transduction and receptor-mediated endocytosis of specific ligands for lysosomal degradation. The encoded protein plays a critical role in the migration of neurons during development by mediating Reelin signaling, and also functions as a receptor for the cholesterol transport protein apolipoprotein E. Expression of this gene may be a marker for major depressive disorder. Alternatively spliced transcript variants encoding multiple isoforms have been observed for this gene. [provided by RefSeq, Jun 2011],

Function :

alternative products:Additional isoforms seem to exist. No differences were observed in the pattern splicing between control and Alzheimer brains,disease:Genetic variation in LRP8 is associated with susceptibility to myocardial infarction type 1 [MIM:608446]. Atherosclerotic coronary artery disease (CAD) and myocardial infarction (MI) are complex traits that account for the leading cause of death in the Western world heart disease.,domain:The cytoplasmic domain is involved in the binding of DAB1 and in the recruitment of JNK-interacting proteins. Isoforms, which lack part of the cytoplasmic domain, are unable to recruit members of the family of JNK interacting proteins (JIP) to the cytoplasmic tail.,function:Cell surface receptor for Reelin (RELN) and apolipoprotein E (apoE)-containing ligands. LRP8 participates in transmitting the extracellular Reelin signal to intracellular signaling p

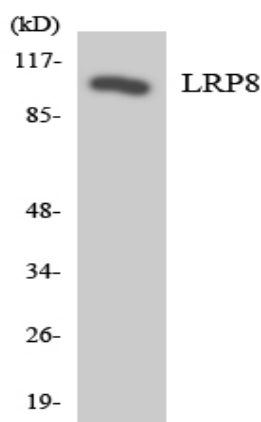
Subcellular Location :

Cell membrane ; Single-pass type I membrane protein . Secreted . Isoforms that contain the exon coding for a furin-type cleavage site are proteolytically processed, leading to a secreted receptor fragment. .

Expression :

Expressed mainly in brain and placenta. Also expressed in platelets and megakaryocytic cells. Not expressed in the liver.

Products Images



Western blot analysis of the lysates from HeLa cells using LRP8 antibody.