

**ANT3 Polyclonal Antibody**

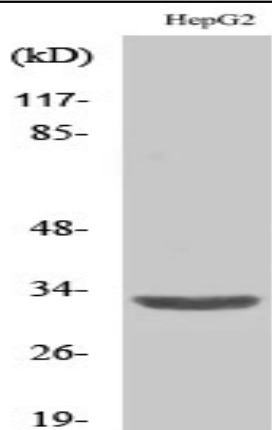
<b>Catalog No :</b>	YT0241
<b>Reactivity :</b>	Human
<b>Applications :</b>	WB;IHC;IF;ELISA
<b>Target :</b>	ANT3
<b>Fields :</b>	>>Calcium signaling pathway;>>cGMP-PKG signaling pathway;>>Necroptosis;>>Cellular senescence;>>Neutrophil extracellular trap formation;>>Alzheimer disease;>>Parkinson disease;>>Huntington disease;>>Spinocerebellar ataxia;>>Prion disease;>>Pathways of neurodegeneration - multiple diseases;>>Influenza A;>>Human T-cell leukemia virus 1 infection;>>Chemical carcinogenesis - reactive oxygen species;>>Diabetic cardiomyopathy
<b>Gene Name :</b>	SLC25A6
<b>Protein Name :</b>	ADP/ATP translocase 3
<b>Human Gene Id :</b>	293
<b>Human Swiss Prot No :</b>	P12236
<b>Immunogen :</b>	The antiserum was produced against synthesized peptide derived from human SLC25A6. AA range:121-170
<b>Specificity :</b>	ANT3 Polyclonal Antibody detects endogenous levels of ANT3 protein.
<b>Formulation :</b>	Liquid in PBS containing 50% glycerol, 0.5% BSA and 0.02% sodium azide.
<b>Source :</b>	Polyclonal, Rabbit,IgG
<b>Dilution :</b>	WB 1:500 - 1:2000. IHC 1:100 - 1:300. ELISA: 1:40000.. IF 1:50-200
<b>Purification :</b>	The antibody was affinity-purified from rabbit antiserum by affinity-chromatography using epitope-specific immunogen.  1 mg/ml

---

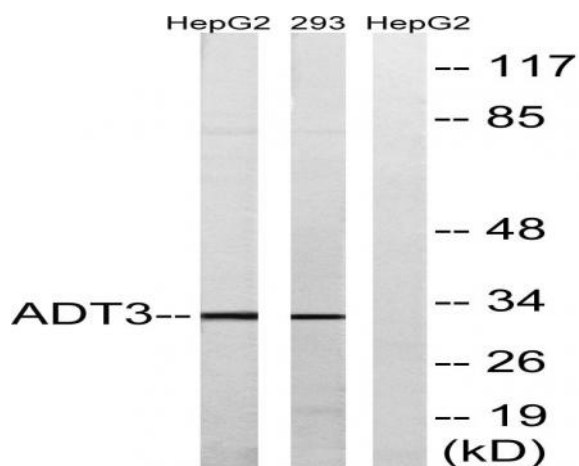
<b>Storage Stability :</b>	-15°C to -25°C/1 year(Do not lower than -25°C)
<b>Observed Band :</b>	32kD
<b>Cell Pathway :</b>	Calcium;Parkinson's disease;Huntington's disease;
<b>Background :</b>	<p>This gene is a member of the mitochondrial carrier subfamily of solute carrier protein genes. The product of this gene functions as a gated pore that translocates ADP from the cytoplasm into the mitochondrial matrix and ATP from the mitochondrial matrix into the cytoplasm. The protein is implicated in the function of the permeability transition pore complex (PTPC), which regulates the release of mitochondrial products that induce apoptosis. The human genome contains several non-transcribed pseudogenes of this gene. [provided by RefSeq, Jun 2013],</p>
<b>Function :</b>	<p>function:Catalyzes the exchange of ADP and ATP across the mitochondrial inner membrane. May participate in the formation of the permeability transition pore complex (PTPC) responsible for the release of mitochondrial products that triggers apoptosis.,miscellaneous:The gene encoding for this protein is located in the pseudoautosomal region 1 (PAR1) of X and Y chromosomes.,miscellaneous:The transmembrane helices are not perpendicular to the plane of the membrane, but cross the membrane at an angle. Odd-numbered transmembrane helices exhibit a sharp kink, due to the presence of a conserved proline residue.,similarity:Belongs to the mitochondrial carrier family.,similarity:Contains 3 Solcar repeats.,subunit:Homodimer. Interacts with influenza A virus PB1-F2 protein and HIV-1 Vpr.,</p>
<b>Subcellular Location :</b>	<p>Mitochondrion inner membrane ; Multi-pass membrane protein . Membrane ; Multi-pass membrane protein . The complex formed with ARL2BP, ARL2 and SLC25A6/ANT3 is expressed in mitochondria (By similarity). May localize to non-mitochondrial membranes (By similarity). .</p>
<b>Expression :</b>	Expressed in erythrocytes (at protein level).
<b>Sort :</b>	2068
<b>No4 :</b>	1
<b>Host :</b>	Rabbit
<b>Modifications :</b>	Unmodified

---

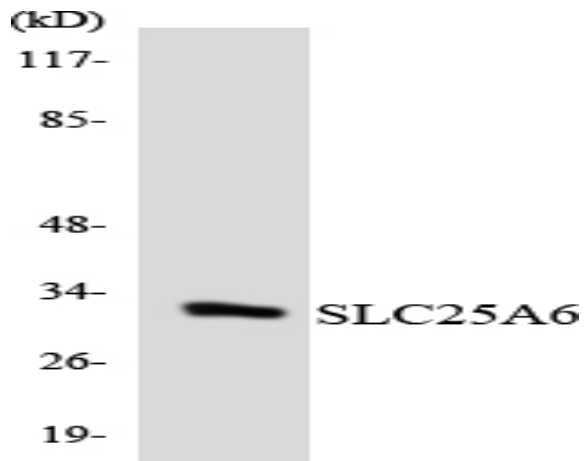
## Products Images



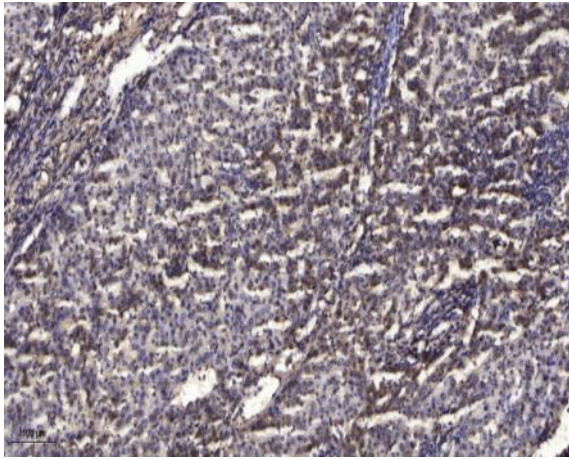
Western Blot analysis of various cells using ANT3 Polyclonal Antibody diluted at 1:2000



Western blot analysis of lysates from HepG2 and 293 cells, using SLC25A6 Antibody. The lane on the right is blocked with the synthesized peptide.



Western blot analysis of the lysates from K562 cells using SLC25A6 antibody.



Immunohistochemical analysis of paraffin-embedded human liver cancer. 1, Antibody was diluted at 1:200(4° overnight). 2, Tris-EDTA,pH9.0 was used for antigen retrieval. 3,Secondary antibody was diluted at 1:200(room temperature, 45min).