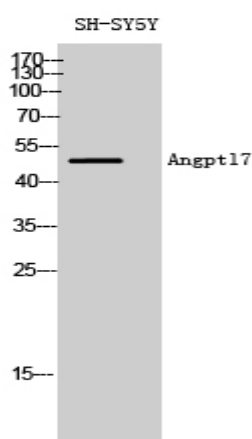


Angptl7 Polyclonal Antibody

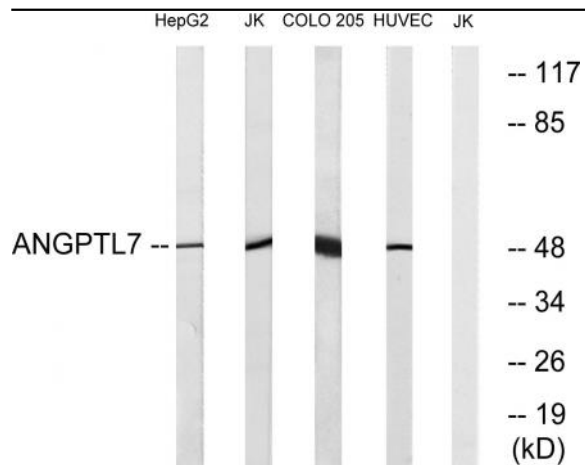
Catalog No :	YT0229
Reactivity :	Human;Mouse
Applications :	WB;IHC;IF;ELISA
Target :	Angptl7
Gene Name :	ANGPTL7
Protein Name :	Angiopoietin-related protein 7
Human Gene Id :	10218
Human Swiss Prot No :	O43827
Mouse Gene Id :	654812
Mouse Swiss Prot No :	Q8R1Q3
Immunogen :	The antiserum was produced against synthesized peptide derived from human ANGPTL7. AA range:297-346
Specificity :	Angptl7 Polyclonal Antibody detects endogenous levels of Angptl7 protein.
Formulation :	Liquid in PBS containing 50% glycerol, 0.5% BSA and 0.02% sodium azide.
Source :	Polyclonal, Rabbit,IgG
Dilution :	WB 1:500 - 1:2000. IHC 1:100 - 1:300. ELISA: 1:10000.. IF 1:50-200
Purification :	The antibody was affinity-purified from rabbit antiserum by affinity-chromatography using epitope-specific immunogen.
Concentration :	1 mg/ml
Storage Stability :	-15°C to -25°C/1 year(Do not lower than -25°C)

Observed Band :	50kD
Background :	similarity:Contains 1 fibrinogen C-terminal domain.,tissue specificity:Highly and specifically expressed in the cornea where is confined to the stromal layer.,
Function :	similarity:Contains 1 fibrinogen C-terminal domain.,tissue specificity:Highly and specifically expressed in the cornea where is confined to the stromal layer.,
Subcellular Location :	Secreted .
Expression :	Higly expressed in the cornea (at protein level) (PubMed:11682471). Expression is restricted to the stromal layer (PubMed:11682471). Also detected at the junction between the corneal stromal layer and the conjunctiva. Not detected in the sclera (PubMed:11682471).
Sort :	2031
No4 :	1
Host :	Rabbit
Modifications :	Unmodified

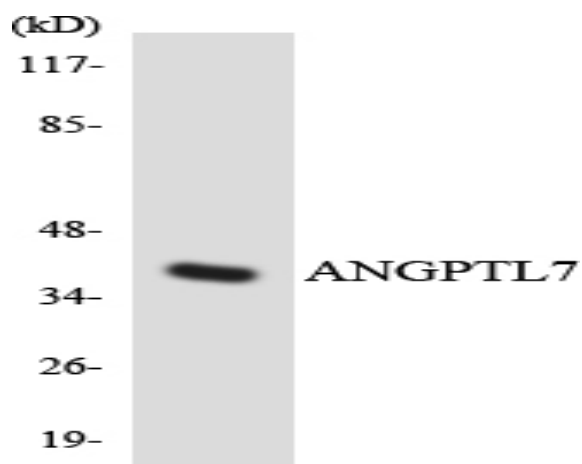
Products Images



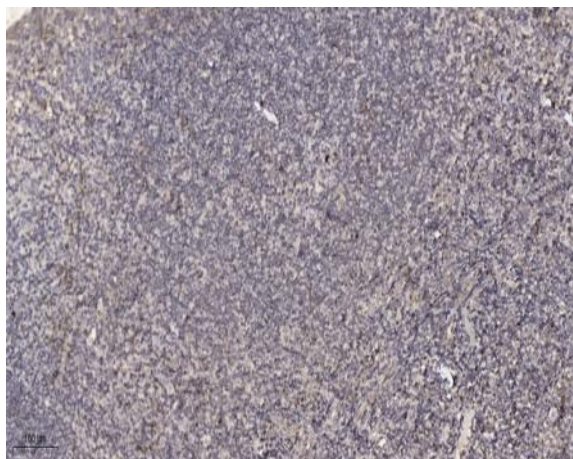
Western Blot analysis of SH-SY5Y cells using Angpt17 Polyclonal Antibody diluted at 1:2000



Western blot analysis of lysates from Jurkat, COLO, HUVEC, and HepG2 cells, using ANGPTL7 Antibody. The lane on the right is blocked with the synthesized peptide.



Western blot analysis of the lysates from HeLa cells using ANGPTL7 antibody.



Immunohistochemical analysis of paraffin-embedded human tonsil. 1, Antibody was diluted at 1:200(4° overnight). 2, Tris-EDTA,pH9.0 was used for antigen retrieval. 3,Secondary antibody was diluted at 1:200(room temperature, 30min).