

AMY-1 Polyclonal Antibody

Catalog No :	YT0223
Reactivity :	Human;Mouse
Applications :	IHC;IF;ELISA
Target :	AMY-1
Gene Name :	MYCBP
Protein Name :	C-Myc-binding protein
Human Gene Id :	26292
Human Swiss Prot No :	Q99417
Mouse Swiss Prot No :	Q9EQS3
Immunogen :	Synthesized peptide derived from AMY-1 . at AA range: 30-110
Specificity :	AMY-1 Polyclonal Antibody detects endogenous levels of AMY-1 protein.
Formulation :	Liquid in PBS containing 50% glycerol, 0.5% BSA and 0.02% sodium azide.
Source :	Polyclonal, Rabbit,IgG
Dilution :	IHC 1:100 - 1:300. ELISA: 1:10000.. IF 1:50-200
Purification :	The antibody was affinity-purified from rabbit antiserum by affinity-chromatography using epitope-specific immunogen.
Concentration :	1 mg/ml
Storage Stability :	-15°C to -25°C/1 year(Do not lower than -25°C)
Molecularweight :	12kD

Background : The protein encoded by this gene binds to the N-terminus of the oncogenic protein C-MYC, enhancing the ability of C-MYC to activate E box-dependent transcription. The encoded protein is normally found in the cytoplasm, but it translocates to the nucleus during S phase of the cell cycle and associates with C-MYC. This protein may be involved in spermatogenesis. This gene can be silenced by microRNA-22. Two transcript variants, one protein-coding and the other probably not protein-coding, have been found for this gene. [provided by RefSeq, Nov 2011],

Function : function:May control the transcriptional activity of MYC. Stimulates the activation of E box-dependent transcription by MYC.,similarity:Belongs to the AMY1 family.,subcellular location:Translocates into the nucleus in the S phase of the cell cycle upon an increase of c-Myc expression. Found in the mitochondria when associated with AKAP1.,subunit:Binds via its C-terminal region to the N-terminal region of MYC. Associates with AKAP1/S-AKAP84. Interacts with MYCBPAP.,tissue specificity:Highly expressed in heart, placenta, pancreas, skeletal muscle and kidney. Also present at low levels in lung.,

Subcellular Location : Cytoplasm. Nucleus. Mitochondrion. Translocates into the nucleus in the S phase of the cell cycle upon an increase of MYC expression. Found in the mitochondria when associated with AKAP1.

Expression : Highly expressed in heart, placenta, pancreas, skeletal muscle and kidney. Also present at low levels in lung.

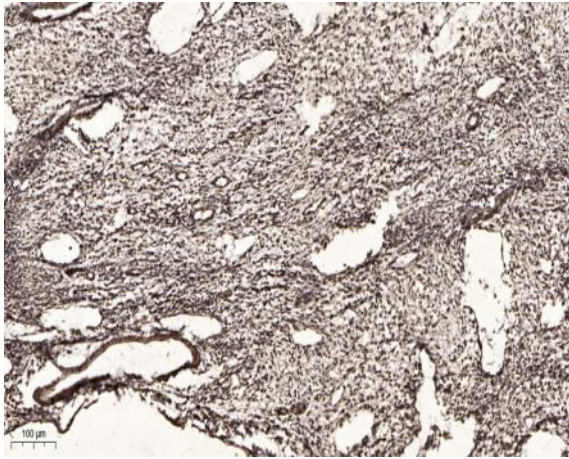
Sort : 1999

No4 : 1

Host : Rabbit

Modifications : Unmodified

Products Images



Immunohistochemical analysis of paraffin-embedded human oophoroma. 1, Antibody was diluted at 1:200(4° overnight). 2, Tris-EDTA,pH9.0 was used for antigen retrieval. 3,Secondary antibody was diluted at 1:200(room temperature, 45min).