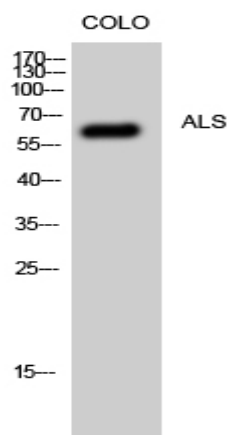


**ALS Polyclonal Antibody**

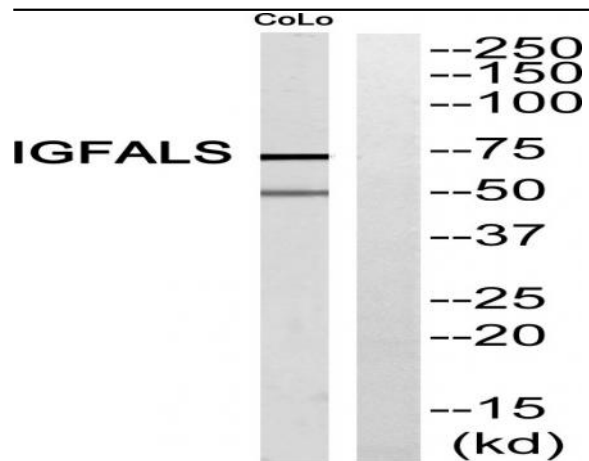
<b>Catalog No :</b>	YT0201
<b>Reactivity :</b>	Human;Rat;Mouse;
<b>Applications :</b>	WB;ELISA
<b>Target :</b>	ALS
<b>Fields :</b>	>>Growth hormone synthesis, secretion and action
<b>Gene Name :</b>	IGFALS
<b>Protein Name :</b>	Insulin-like growth factor-binding protein complex acid labile subunit
<b>Human Gene Id :</b>	3483
<b>Human Swiss Prot No :</b>	P35858
<b>Mouse Swiss Prot No :</b>	P70389
<b>Immunogen :</b>	The antiserum was produced against synthesized peptide derived from human IGFALS. AA range:303-352
<b>Specificity :</b>	ALS Polyclonal Antibody detects endogenous levels of ALS protein.
<b>Formulation :</b>	Liquid in PBS containing 50% glycerol, 0.5% BSA and 0.02% sodium azide.
<b>Source :</b>	Polyclonal, Rabbit,IgG
<b>Dilution :</b>	WB 1:500 - 1:2000. ELISA: 1:10000. Not yet tested in other applications.
<b>Purification :</b>	The antibody was affinity-purified from rabbit antiserum by affinity-chromatography using epitope-specific immunogen.
<b>Concentration :</b>	1 mg/ml
<b>Storage Stability :</b>	-15°C to -25°C/1 year(Do not lower than -25°C)

<b>Observed Band :</b>	66kD
<b>Background :</b>	The protein encoded by this gene is a serum protein that binds insulin-like growth factors, increasing their half-life and their vascular localization. Production of the encoded protein, which contains twenty leucine-rich repeats, is stimulated by growth hormone. Defects in this gene are a cause of acid-labile subunit deficiency, which manifests itself in a delayed and slow puberty. Three transcript variants encoding two different isoforms have been found for this gene. [provided by RefSeq, Mar 2009],
<b>Function :</b>	function:Involved in protein-protein interactions that result in protein complexes, receptor-ligand binding or cell adhesion.,similarity:Contains 20 LRR (leucine-rich) repeats.,subunit:Forms a ternary complex of about 140 to 150 kDa with IGF-I or IGF-II and IGFBP-3.,tissue specificity:Plasma.,
<b>Subcellular Location :</b>	Secreted, extracellular space.
<b>Expression :</b>	Plasma.
<b>Sort :</b>	1923
<b>No4 :</b>	1
<b>Host :</b>	Rabbit
<b>Modifications :</b>	Unmodified

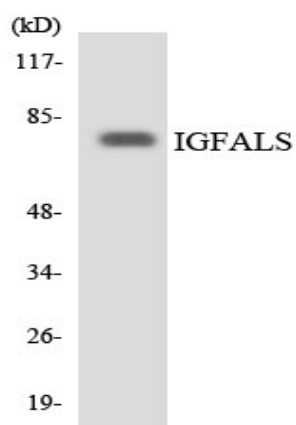
## Products Images



Western Blot analysis of CoLo cells using ALS Polyclonal Antibody



Western blot analysis of IGFALS Antibody. The lane on the right is blocked with the IGFALS peptide.



Western blot analysis of the lysates from RAW264.7 cells using IGFALS antibody.