

## AIFL Polyclonal Antibody

<b>Catalog No :</b>	YT0148
<b>Reactivity :</b>	Human;Mouse
<b>Applications :</b>	WB;IHC;IF;ELISA
<b>Target :</b>	AIFL
<b>Gene Name :</b>	AIFM3
<b>Protein Name :</b>	Apoptosis-inducing factor 3
<b>Human Gene Id :</b>	150209
<b>Human Swiss Prot No :</b>	Q96NN9
<b>Mouse Gene Id :</b>	72168
<b>Mouse Swiss Prot No :</b>	Q3TY86
<b>Immunogen :</b>	The antiserum was produced against synthesized peptide derived from human AIFM3. AA range:10-59
<b>Specificity :</b>	AIFL Polyclonal Antibody detects endogenous levels of AIFL protein.
<b>Formulation :</b>	Liquid in PBS containing 50% glycerol, 0.5% BSA and 0.02% sodium azide.
<b>Source :</b>	Polyclonal, Rabbit,IgG
<b>Dilution :</b>	WB 1:500 - 1:2000. IHC 1:100 - 1:300. IF 1:200 - 1:1000. ELISA: 1:40000. Not yet tested in other applications.
<b>Purification :</b>	The antibody was affinity-purified from rabbit antiserum by affinity-chromatography using epitope-specific immunogen.
<b>Concentration :</b>	1 mg/ml
<b>Storage Stability :</b>	-15°C to -25°C/1 year(Do not lower than -25°C)

**Observed Band :** 67kD

**Background :** domain:The Rieske domain induces apoptosis.,function:Induces apoptosis through a caspase dependent pathway. Reduces mitochondrial membrane potential.,similarity:Belongs to the FAD-dependent oxidoreductase family.,similarity:Contains 1 Rieske domain.,subcellular location:Does not translocate to the nucleus upon induction of apoptosis.,tissue specificity:Ubiquitous. Expressed in bone marrow, cerebral cortex, liver, ovary, thymus, thyroid gland and tongue (at protein level).

**Function :** domain:The Rieske domain induces apoptosis.,function:Induces apoptosis through a caspase dependent pathway. Reduces mitochondrial membrane potential.,similarity:Belongs to the FAD-dependent oxidoreductase family.,similarity:Contains 1 Rieske domain.,subcellular location:Does not translocate to the nucleus upon induction of apoptosis.,tissue specificity:Ubiquitous. Expressed in bone marrow, cerebral cortex, liver, ovary, thymus, thyroid gland and tongue (at protein level).

**Subcellular Location :** Mitochondrion . Does not translocate to the nucleus upon induction of apoptosis.

**Expression :** Ubiquitous. Expressed in bone marrow, cerebral cortex, liver, ovary, thymus, thyroid gland and tongue (at protein level).

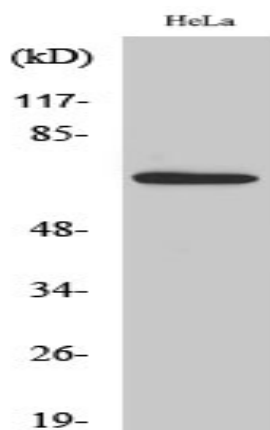
**Sort :** 1802

**No4 :** 1

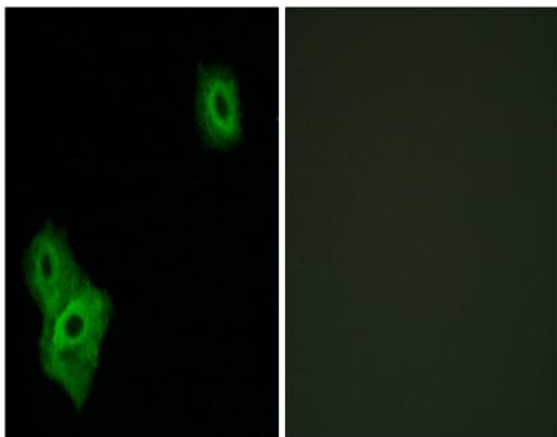
**Host :** Rabbit

**Modifications :** Unmodified

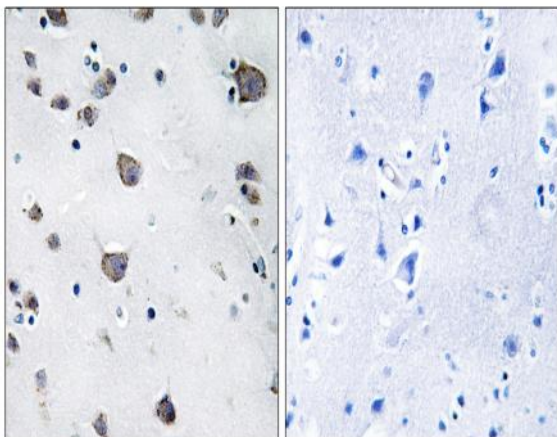
## Products Images



Western Blot analysis of various cells using AIFL Polyclonal Antibody



Immunofluorescence analysis of A549 cells, using AIFM3 Antibody. The picture on the right is blocked with the synthesized peptide.



Immunohistochemistry analysis of paraffin-embedded human brain, using AIFM3 Antibody. The picture on the right is blocked with the synthesized peptide.