

AF-4 Polyclonal Antibody

Catalog No :	YT0140
Reactivity :	Human;Mouse
Applications :	IHC;IF;WB;ELISA
Target :	AF-4
Fields :	>>Transcriptional misregulation in cancer
Gene Name :	AFF1
Protein Name :	AF4/FMR2 family member 1
Human Gene Id :	4299
Human Swiss Prot No :	P51825
Mouse Swiss Prot No :	O88573
Immunogen :	The antiserum was produced against synthesized peptide derived from human AF4. AA range:1-50
Specificity :	AF-4 Polyclonal Antibody detects endogenous levels of AF-4 protein.
Formulation :	Liquid in PBS containing 50% glycerol, 0.5% BSA and 0.02% sodium azide.
Source :	Polyclonal, Rabbit,IgG
Dilution :	WB 1:500-2000 IHC 1:100 - 1:300. ELISA: 1:20000.. IF 1:50-200
Purification :	The antibody was affinity-purified from rabbit antiserum by affinity-chromatography using epitope-specific immunogen.
Concentration :	1 mg/ml
Storage Stability :	-15°C to -25°C/1 year(Do not lower than -25°C)

Observed Band : 130kD

Background : This gene encodes a member of the AF4/ lymphoid nuclear protein related to AF4/Fragile X E mental retardation syndrome family of proteins, which have been implicated in childhood lymphoblastic leukemia, Fragile X E site mental retardation, and ataxia. It is the prevalent mixed-lineage leukemia fusion gene associated with spontaneous acute lymphoblastic leukemia. Members of this family have three conserved domains: an N-terminal homology domain, an AF4/ lymphoid nuclear protein related to AF4/Fragile X E mental retardation syndrome domain, and a C-terminal homology domain. The protein functions as a regulator of RNA polymerase II-mediated transcription through elongation and chromatin remodeling functions. Through RNA interference screens, this gene has been shown to promote the expression of CD133, a plasma membrane glycoprotein required for leukemia cell survival. Alternative splicing results in mu

Function : disease:A chromosomal aberration involving AFF1 is associated with acute leukemias. Translocation t(4;11)(q21;q23) with MLL/HRX. The result is a rogue activator protein.,similarity:Belongs to the AF4 family.,

Subcellular Location : Nucleus .

Expression : Epithelium,PCR rescued clones,Placenta,

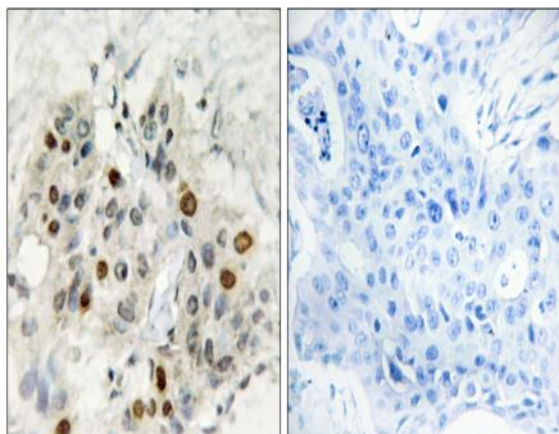
Sort : 1774

No4 : 1

Host : Rabbit

Modifications : Unmodified

Products Images



Immunohistochemistry analysis of paraffin-embedded human breast carcinoma tissue, using AF4 Antibody. The picture on the right is blocked with the synthesized peptide.