

AF-10 Polyclonal Antibody

Catalog No :	YT0139
Reactivity :	Human;Mouse
Applications :	WB;IHC;IF;ELISA
Target :	AF-10
Gene Name :	MLLT10
Protein Name :	Protein AF-10
Human Gene Id :	8028
Human Swiss Prot No :	P55197
Mouse Gene Id :	17354
Mouse Swiss Prot No :	O54826
Immunogen :	The antiserum was produced against synthesized peptide derived from human AF10. AA range:211-260
Specificity :	AF-10 Polyclonal Antibody detects endogenous levels of AF-10 protein.
Formulation :	Liquid in PBS containing 50% glycerol, 0.5% BSA and 0.02% sodium azide.
Source :	Polyclonal, Rabbit,IgG
Dilution :	WB 1:500 - 1:2000. IHC 1:100 - 1:300. IF 1:200 - 1:1000. ELISA: 1:10000. Not yet tested in other applications.
Purification :	The antibody was affinity-purified from rabbit antiserum by affinity-chromatography using epitope-specific immunogen.
Concentration :	1 mg/ml
Storage Stability :	-15°C to -25°C/1 year(Do not lower than -25°C)

Observed Band : 109kD

Background : myeloid/lymphoid or mixed-lineage leukemia; translocated to, 10(MLLT10) Homo sapiens This gene encodes a transcription factor and has been identified as a partner gene involved in several chromosomal rearrangements resulting in various leukemias. Multiple transcript variants encoding different isoforms have been found for this gene. [provided by RefSeq, Sep 2010],

Function : disease:A chromosomal aberration involving MLLT10 is associated with acute leukemias. Translocation t(10;11)(p12;q23) with MLL/HRX. The result is a rogue activator protein.,disease:A chromosomal aberration involving MLLT10 is associated with diffuse histiocytic lymphomas. Translocation t(10;11)(p13;q14) with PICALM.,PTM:Phosphorylated upon DNA damage, probably by ATM or ATR.,similarity:Contains 2 PHD-type zinc fingers.,tissue specificity:Expressed abundantly in testis.,

Subcellular Location : Nucleus .

Expression : Expressed abundantly in testis.

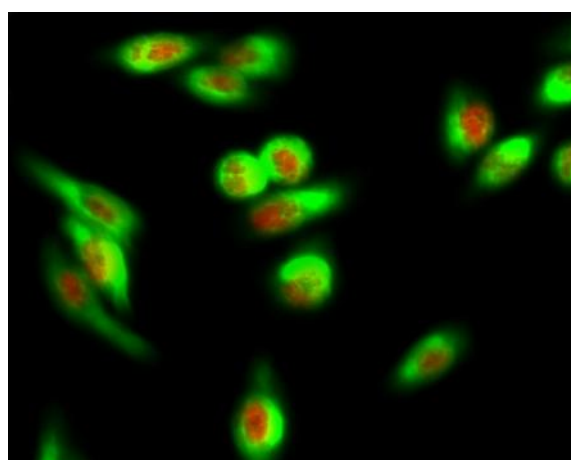
Sort : 1773

No4 : 1

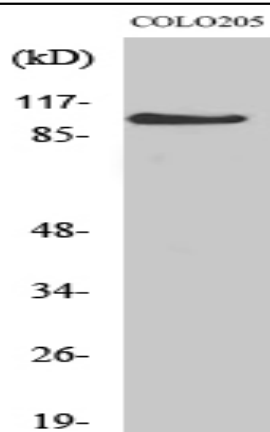
Host : Rabbit

Modifications : Unmodified

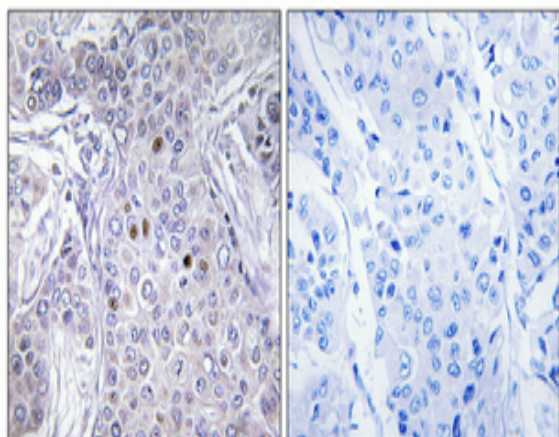
Products Images



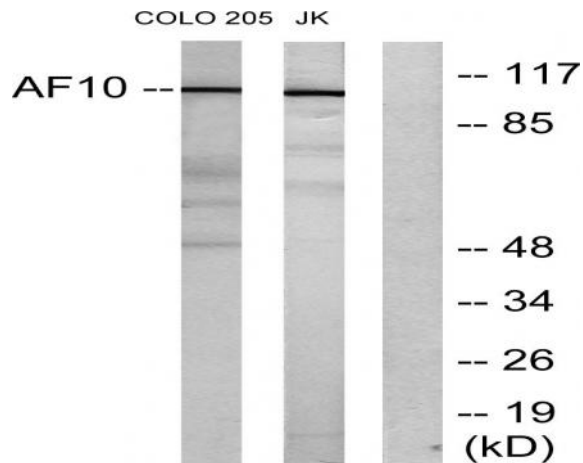
Immunofluorescence analysis of HeLa cell. 1,AF-10 Polyclonal Antibody(red) was diluted at 1:200(4° overnight). COX IV Monoclonal Antibody(6C8)(green) was diluted at 1:200(4° overnight). 2, Goat Anti Rabbit Alexa Fluor 594 Catalog:RS3611 was diluted at 1:1000(room temperature, 50min). Goat Anti Mouse Alexa Fluor 488 Catalog:RS3208 was diluted at 1:1000(room temperature, 50min).



Western Blot analysis of various cells using AF-10 Polyclonal Antibody diluted at 1:1000



Immunohistochemical analysis of paraffin-embedded Human breast cancer. Antibody was diluted at 1:100 (4° overnight). High-pressure and temperature Tris-EDTA, pH 8.0 was used for antigen retrieval. Negative control (right) obtained from antibody was pre-absorbed by immunogen peptide.



Western blot analysis of lysates from COLO205 and Jurkat cells, using AF10 Antibody. The lane on the right is blocked with the synthesized peptide.