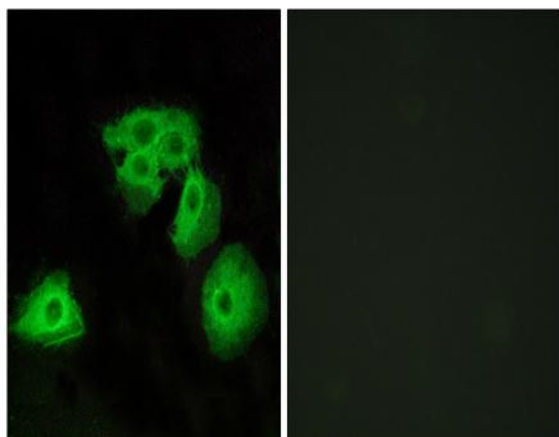


Adenosine A3-R Polyclonal Antibody

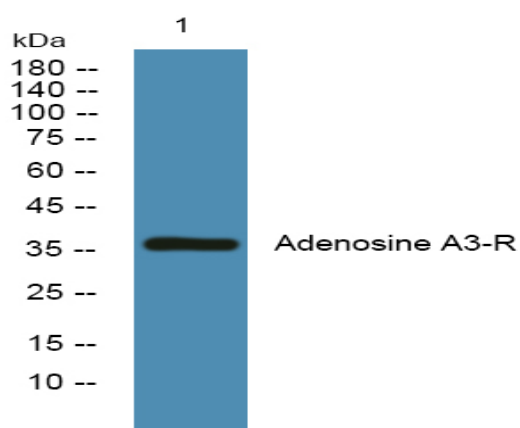
Catalog No :	YT0133
Reactivity :	Human;Mouse;Rat
Applications :	WB;IF;ELISA
Target :	Adenosine A3-R
Gene Name :	ADORA3
Protein Name :	Adenosine receptor A3
Human Gene Id :	140
Human Swiss Prot No :	P33765
Mouse Swiss Prot No :	Q61618
Rat Gene Id :	1.00912e+008
Rat Swiss Prot No :	P28647
Immunogen :	The antiserum was produced against synthesized peptide derived from human ADORA3. AA range:255-304
Specificity :	Adenosine A3-R Polyclonal Antibody detects endogenous levels of Adenosine A3-R protein.
Formulation :	Liquid in PBS containing 50% glycerol, 0.5% BSA and 0.02% sodium azide.
Source :	Polyclonal, Rabbit,IgG
Dilution :	WB 1:500 - 1:2000. IF 1:200 - 1:1000. ELISA: 1:10000. Not yet tested in other applications.
Purification :	The antibody was affinity-purified from rabbit antiserum by affinity-chromatography using epitope-specific immunogen.

Concentration :	1 mg/ml
Storage Stability :	-15°C to -25°C/1 year(Do not lower than -25°C)
Observed Band :	36kD
Cell Pathway :	Neuroactive ligand-receptor interaction;
Background :	<p>This gene encodes a protein that belongs to the family of adenosine receptors, which are G-protein-coupled receptors that are involved in a variety of intracellular signaling pathways and physiological functions. The receptor encoded by this gene mediates a sustained cardioprotective function during cardiac ischemia, it is involved in the inhibition of neutrophil degranulation in neutrophil-mediated tissue injury, it has been implicated in both neuroprotective and neurodegenerative effects, and it may also mediate both cell proliferation and cell death. Alternative splicing results in multiple transcript variants. This gene shares its 5' terminal exon with some transcripts from overlapping GeneID:57413, which encodes an immunoglobulin domain-containing protein. [provided by RefSeq, Nov 2014],</p>
Function :	<p>function:Receptor for adenosine. The activity of this receptor is mediated by G proteins which inhibits adenylyl cyclase. Possible role in reproduction.,PTM:Phosphorylation on Ser-317 may be crucial for rapid desensitization.,similarity:Belongs to the G-protein coupled receptor 1 family.,</p>
Subcellular Location :	plasma membrane,integral component of membrane,
Expression :	Adrenal gland,Brain,Heart,Lung,Testis,
Sort :	1757
No4 :	1
Host :	Rabbit
Modifications :	Unmodified

Products Images



Immunofluorescence analysis of HeLa cells, using ADORA3 Antibody. The picture on the right is blocked with the synthesized peptide.



Western blot analysis of lysates from U2OS cells, primary antibody was diluted at 1:1000, 4° over night