

ADCK2 Polyclonal Antibody

Catalog No :	YT0121
Reactivity :	Human;Rat;Mouse;
Applications :	WB;IHC;IF;ELISA
Target :	ADCK2
Gene Name :	ADCK2
Protein Name :	Uncharacterized aarF domain-containing protein kinase 2
Human Gene Id :	90956
Human Swiss Prot No :	Q7Z695
Mouse Swiss Prot No :	Q6NSR3
Immunogen :	The antiserum was produced against synthesized peptide derived from human ADCK2. AA range:241-290
Specificity :	ADCK2 Polyclonal Antibody detects endogenous levels of ADCK2 protein.
Formulation :	Liquid in PBS containing 50% glycerol, 0.5% BSA and 0.02% sodium azide.
Source :	Polyclonal, Rabbit,IgG
Dilution :	WB 1:500 - 1:2000. IHC 1:100 - 1:300. IF 1:200 - 1:1000. ELISA: 1:10000. Not yet tested in other applications.
Purification :	The antibody was affinity-purified from rabbit antiserum by affinity-chromatography using epitope-specific immunogen.
Concentration :	1 mg/ml
Storage Stability :	-15°C to -25°C/1 year(Do not lower than -25°C)
Observed Band :	69kD

Background : function:The function of this protein is not yet clear. It is not known if it has protein kinase activity and what type of substrate it would phosphorylate (Ser, Thr or Tyr).,sequence caution:Aberrant splicing.,similarity:Belongs to the protein kinase superfamily. ADCK protein kinase family.,similarity:Contains 1 protein kinase domain.,

Function : function:The function of this protein is not yet clear. It is not known if it has protein kinase activity and what type of substrate it would phosphorylate (Ser, Thr or Tyr).,sequence caution:Aberrant splicing.,similarity:Belongs to the protein kinase superfamily. ADCK protein kinase family.,similarity:Contains 1 protein kinase domain.,

Subcellular Location : Membrane ; Single-pass membrane protein .

Expression : Muscle,

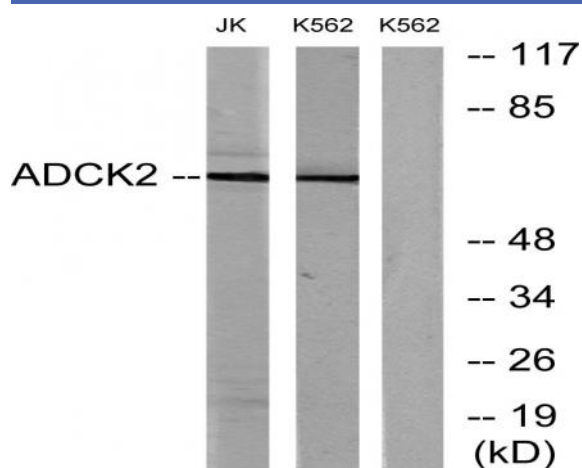
Sort : 1741

No4 : 1

Host : Rabbit

Modifications : Unmodified

Products Images



Western blot analysis of lysates from Jurkat and K562 cells, using ADCK2 Antibody. The lane on the right is blocked with the synthesized peptide.